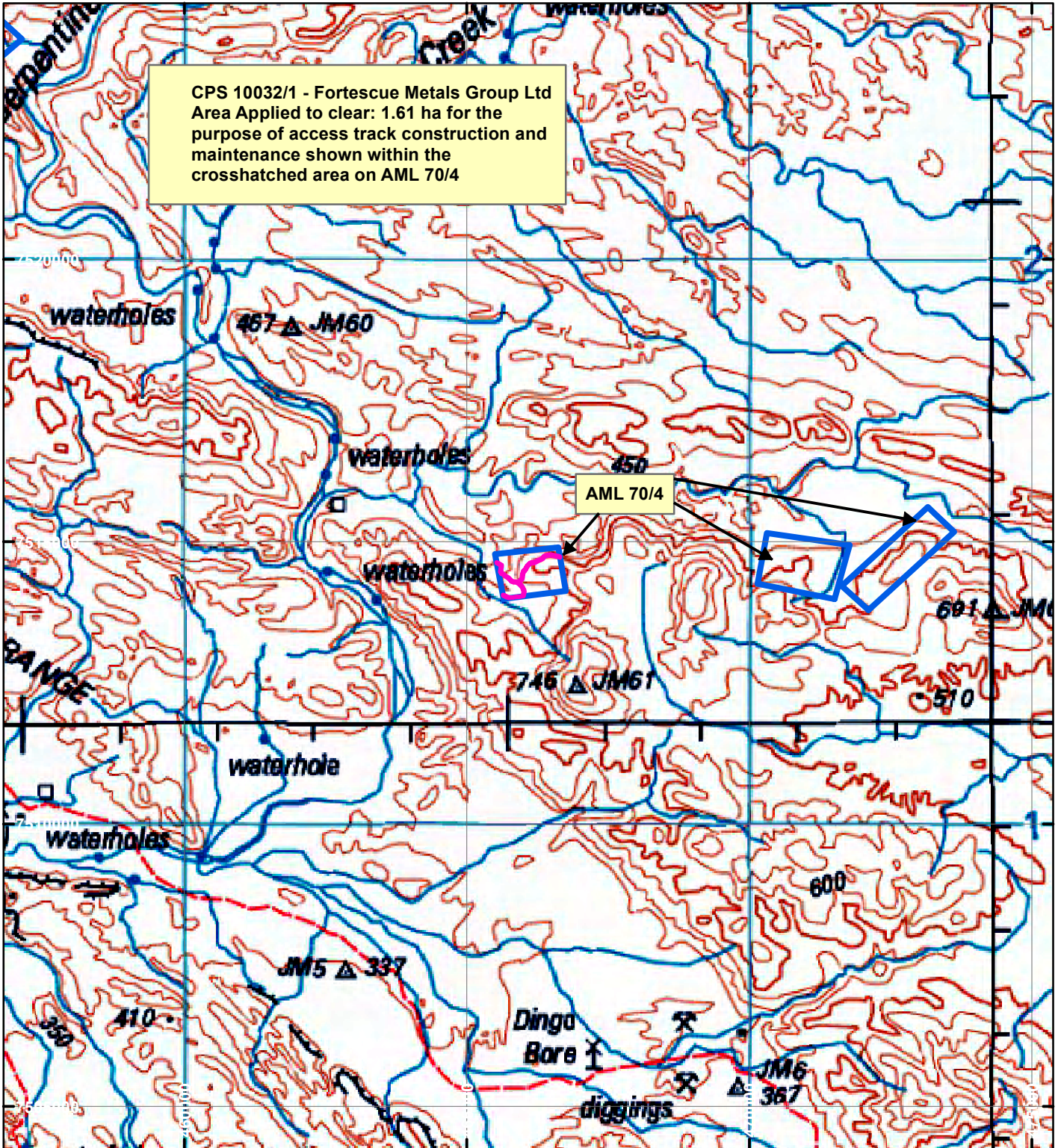


CPS 10032/1 - Fortescue Metals Group Ltd



CPS 10032/1 - Fortescue Metals Group Ltd
 Area Applied to clear: 1.61 ha for the
 purpose of access track construction and
 maintenance shown within the
 crosshatched area on AML 70/4

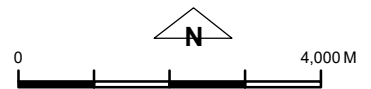
LEGEND



Clearing Instruments



Mining Tenements



Scale 1:100,000

(Approximate when reproduced at A4)

Geocentric Datum Australia 1994

Note: the data in this map have not been projected. This may result in geometric distortion or measurement inaccuracies.

..... Date

Officer with delegated authority under Section 20 of the Environmental Protection Act 1986

Information derived from this map should be confirmed with the data custodian acknowledged by the agency acronym in the legend.



WA Crown Copyright 2002