

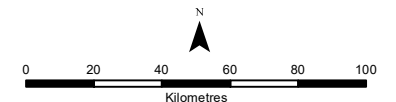
Caliwingina NVCP Application Regional Location

Drawn: M.L.
Plan: RTIO-0953489v1
Date: October 2022

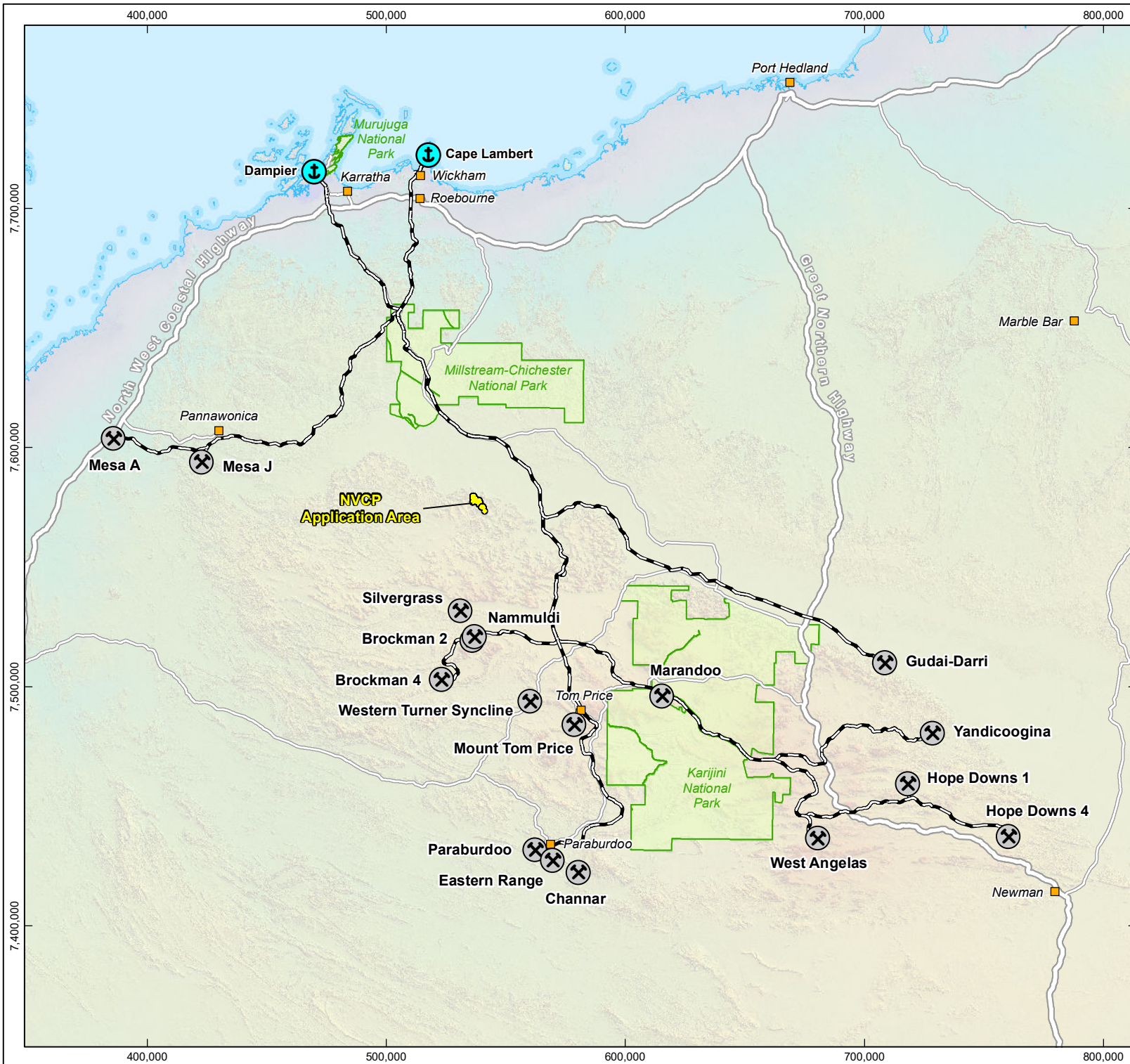
Proj: GDA 1994 MGA Zone 50
Scale: 1:2,225,000 @ A4
gisteam@riotinto.com

Legend

- Rio Tinto Mine
- Port
- Town
- NCVP Application Area
- National Park
- Rio Tinto Railway
- Highway
- Major Road



Disclaimer: This document has been prepared to the highest level of accuracy possible, for the purposes of Rio Tinto's iron ore business. Reproduction of this document in whole or in part by any means is strictly prohibited without the express approval of Rio Tinto. Further, this document may not be referred to, quoted or relied upon for any purpose whatsoever without the written approval of Rio Tinto. Rio Tinto will not be liable to a third party for any loss, damage, liability or claim arising out of or incidental to a third party using or relying on the content contained in this document. Rio Tinto disclaims all risk and the third party assumes all risk and releases and indemnifies and agrees to keep indemnified Rio Tinto from any loss, damage, claim or liability arising directly or indirectly from the use or reliance on this document.







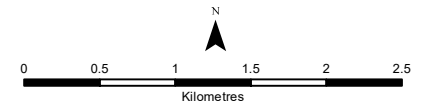
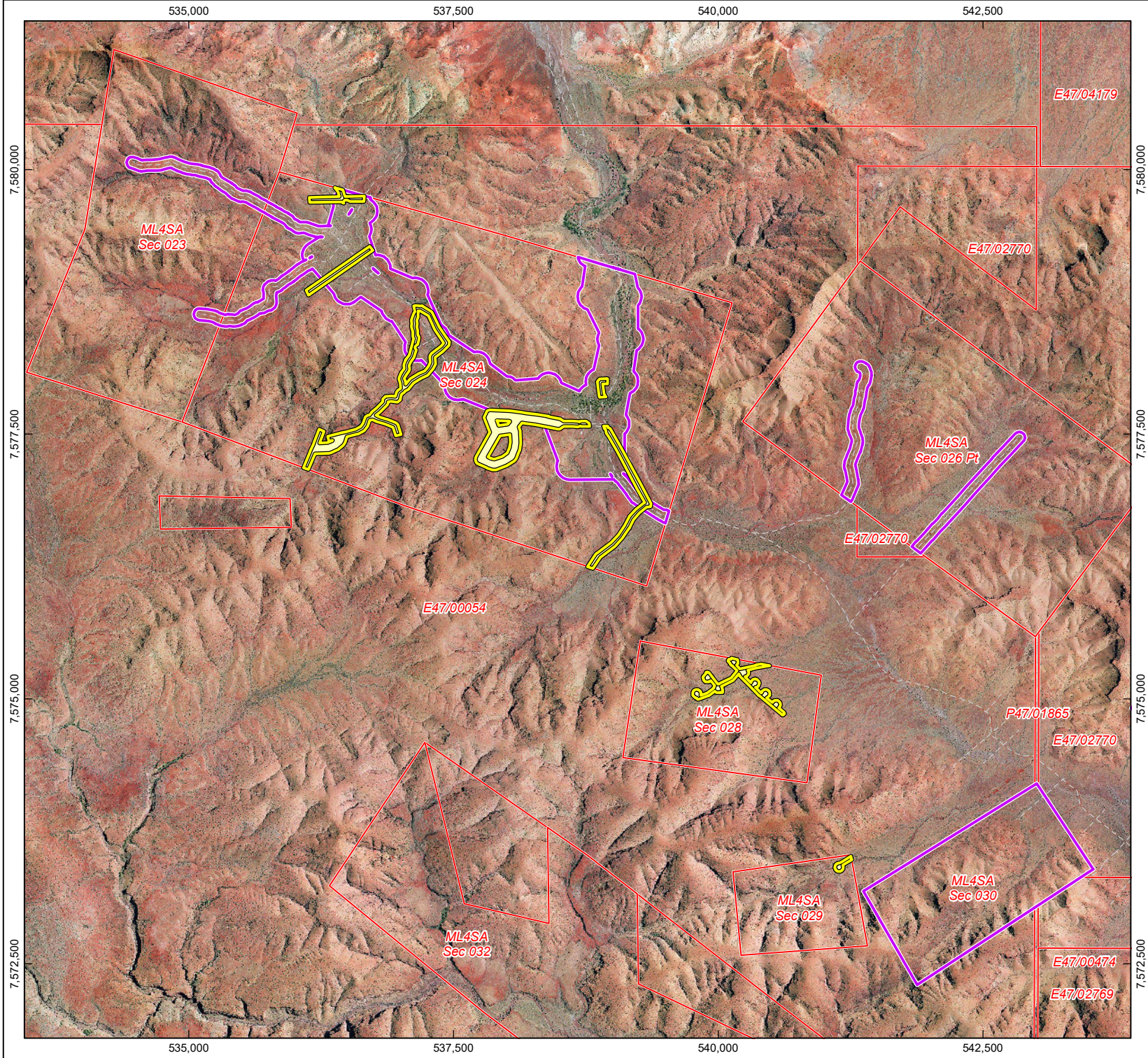
Caliwingina NVCP Application CPS-5697

Drawn: M.L.
Plan: RTIO-0953489v1
Date: October 2022

Proj: GDA 1994 MGA Zone 50
Scale: 1:50,000 @ A4
gisteam@riotinto.com

Legend

-  Proposed Clearing Permit Area
-  CPS 5697/3
-  Rio Tinto Live Mining Act Tenure
-  Track






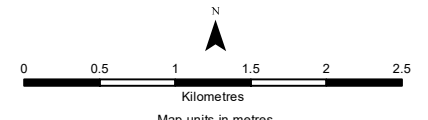
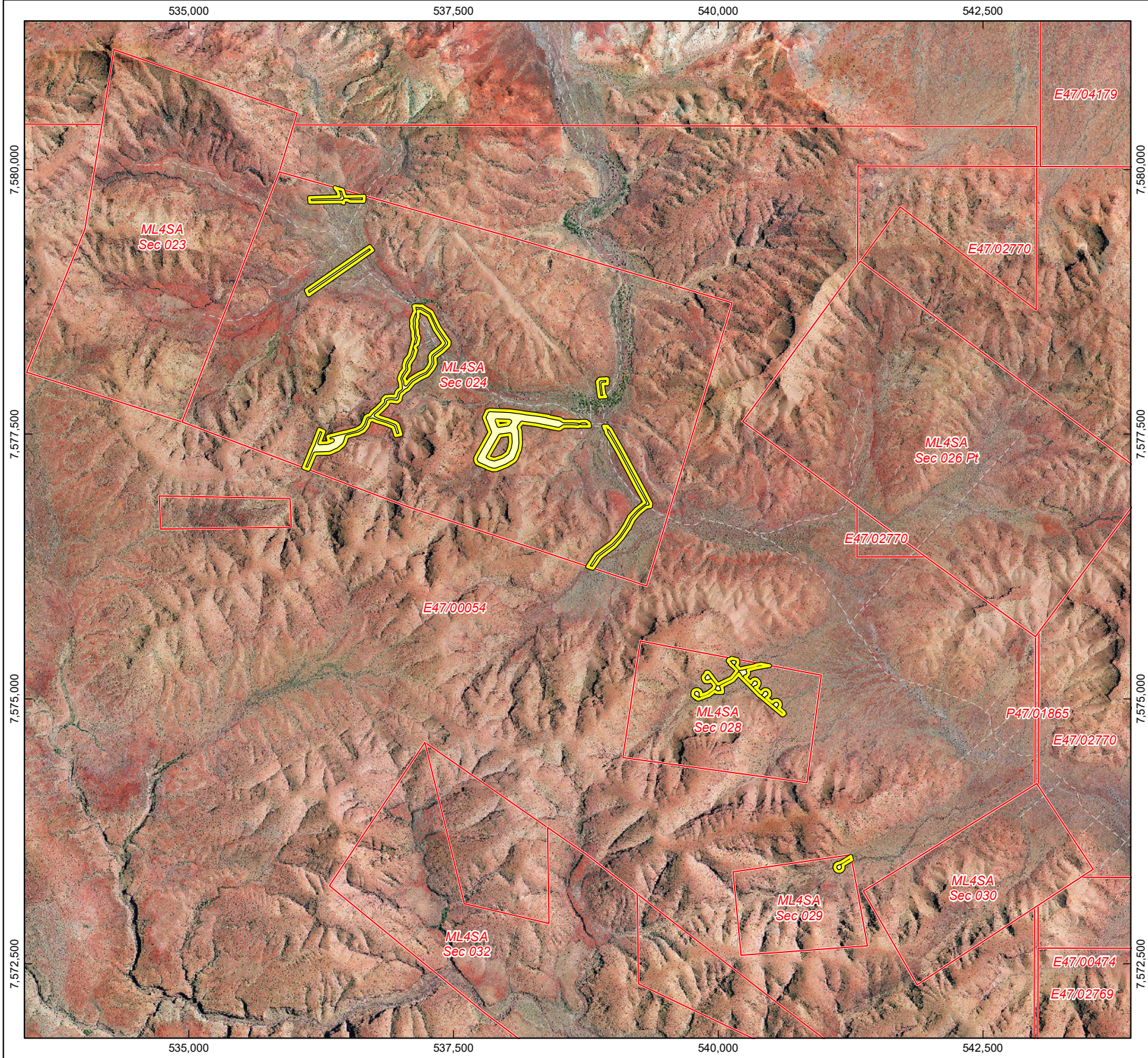
Disclaimer: This document has been prepared to the highest level of accuracy possible, for the purposes of Rio Tinto's iron ore business. Reproduction of this document in whole or in part by any means is strictly prohibited without the express approval of Rio Tinto. Further, this document may not be referred to, quoted or relied upon for any purpose whatsoever without the written approval of Rio Tinto. Rio Tinto will not be liable to a third party for any loss, damage, liability or claim arising out of or incidental to a third party using or relying on the content contained in this document. Rio Tinto disclaims all risk and the third party assumes all risk and releases and indemnifies and agrees to keep indemnified Rio Tinto from any loss, damage, claim or liability arising directly or indirectly from the use or reliance on this document.

Drawn: M.L
Plan: RTIO-0953489v1
Date: October 2022

Proj: GDA 1994 MGA Zone 50
Scale: 1:50,000 @ A4
gisteam@riotinto.com

Legend

-  Proposed Clearing Permit Area
-  Rio Tinto Live Mining Act Tenure
-  Track



Disclaimer: This document has been prepared to the highest level of accuracy possible, for the purposes of Rio Tinto's iron ore business. Reproduction of this document in whole or in part by any means is strictly prohibited without the express approval of Rio Tinto. Further, this document may not be referred to, quoted or relied upon for any purpose whatsoever without the written approval of Rio Tinto. Rio Tinto will not be liable to a third party for any loss, damage, liability or claim arising out of or incidental to a third party using or relying on the content contained in this document. Rio Tinto disclaims all risk and the third party assumes all risk and releases and indemnifies and agrees to keep indemnified Rio Tinto from any loss, damage, claim or liability arising directly or indirectly from the use or reliance on this document.