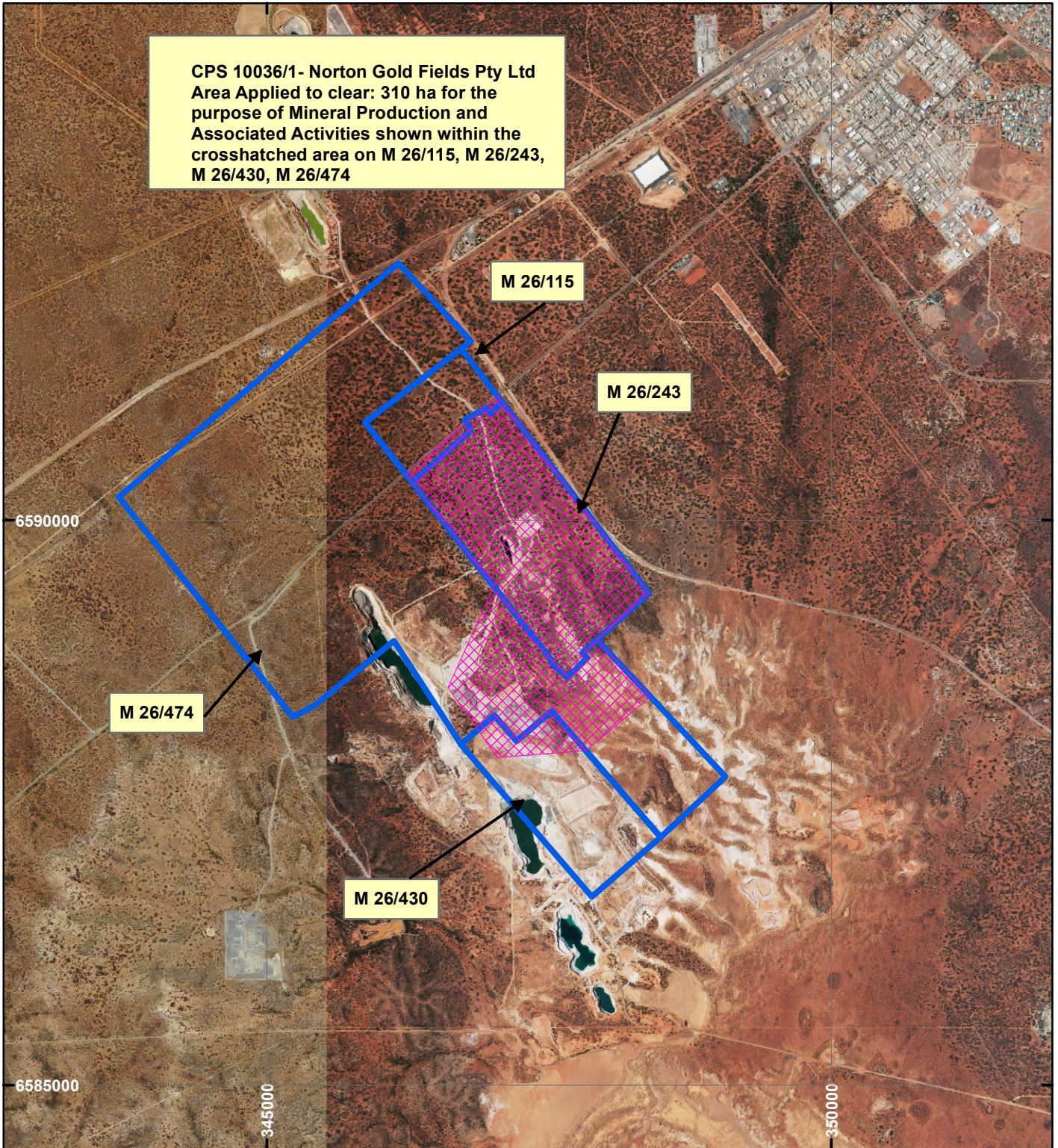
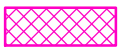


CPS 10036/1 - Norton Gold Fields Pty Ltd

CPS 10036/1- Norton Gold Fields Pty Ltd
 Area Applied to clear: 310 ha for the
 purpose of Mineral Production and
 Associated Activities shown within the
 crosshatched area on M 26/115, M 26/243,
 M 26/430, M 26/474



LEGEND



Clearing Instruments



Mining Tenements

Orthophotography sourced from Landgate



0 2,000 M

Scale 1:50,000

(Approximate when reproduced at A4)

Geocentric Datum Australia 1994

Note: the data in this map have not been projected. This may result in geometric distortion or measurement inaccuracies.

..... Date

Officer with delegated authority under Section 20 of the Environmental Protection Act 1986

Information derived from this map should be confirmed with the data custodian acknowledged by the agency acronym in the legend.



WA Crown Copyright 2002