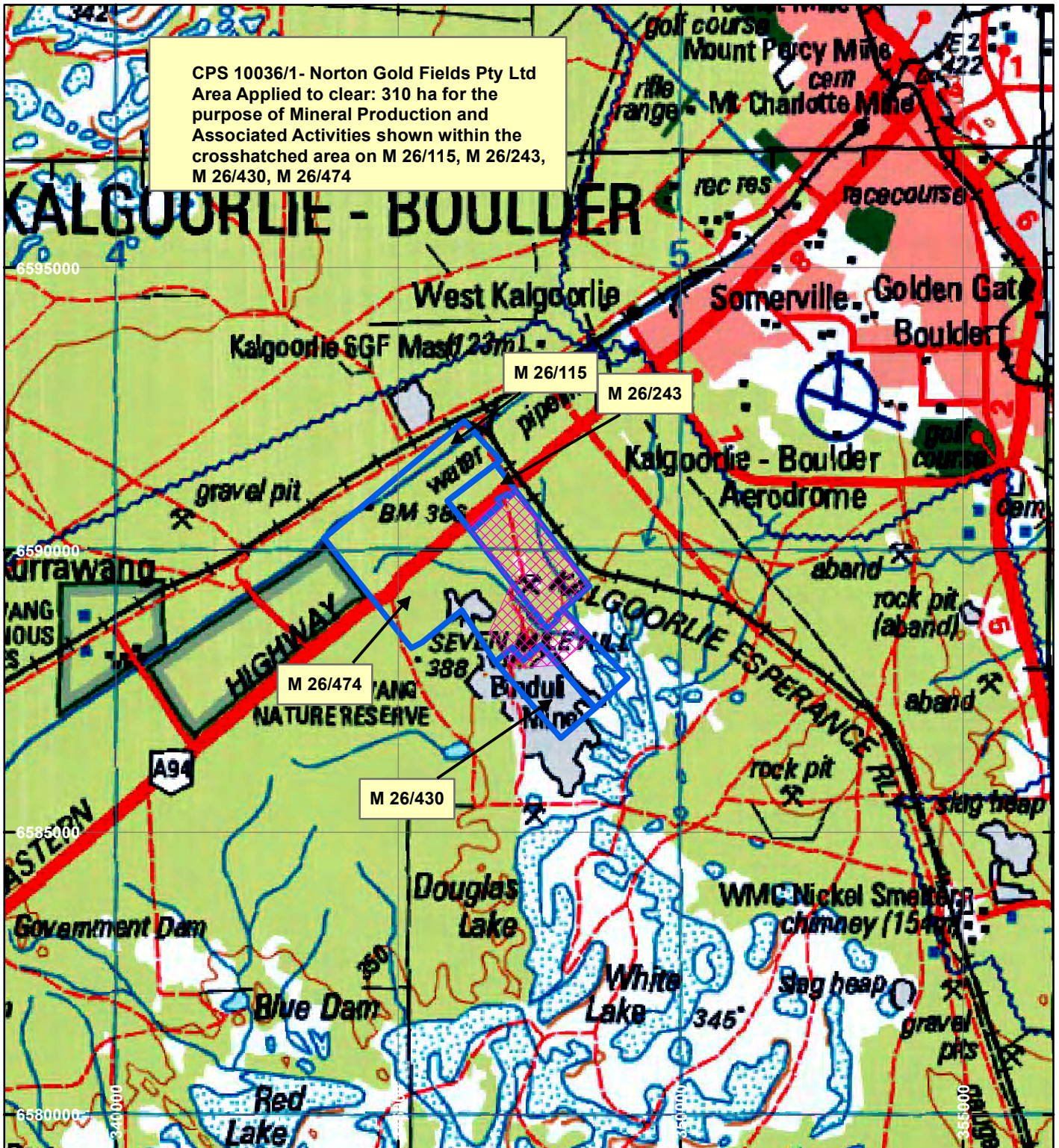


# CPS 10036/1 - Norton Gold Fields Pty Ltd



CPS 10036/1- Norton Gold Fields Pty Ltd  
 Area Applied to clear: 310 ha for the  
 purpose of Mineral Production and  
 Associated Activities shown within the  
 crosshatched area on M 26/115, M 26/243,  
 M 26/430, M 26/474

## LEGEND



Clearing Instruments



Mining Tenements



0 4,000 M

Scale 1:100,000

(Approximate when reproduced at A4)

Geocentric Datum Australia 1994

Note: the data in this map have not been projected. This may result in geometric distortion or measurement inaccuracies.

..... Date .....

Officer with delegated authority under Section 20 of the Environmental Protection Act 1986

Information derived from this map should be confirmed with the data custodian acknowledged by the agency acronym in the legend.

