

CPS 10049/1 - Map B

119°34'12"E

119°34'48"E

31°42'0"S

31°42'0"S

31°42'36"S

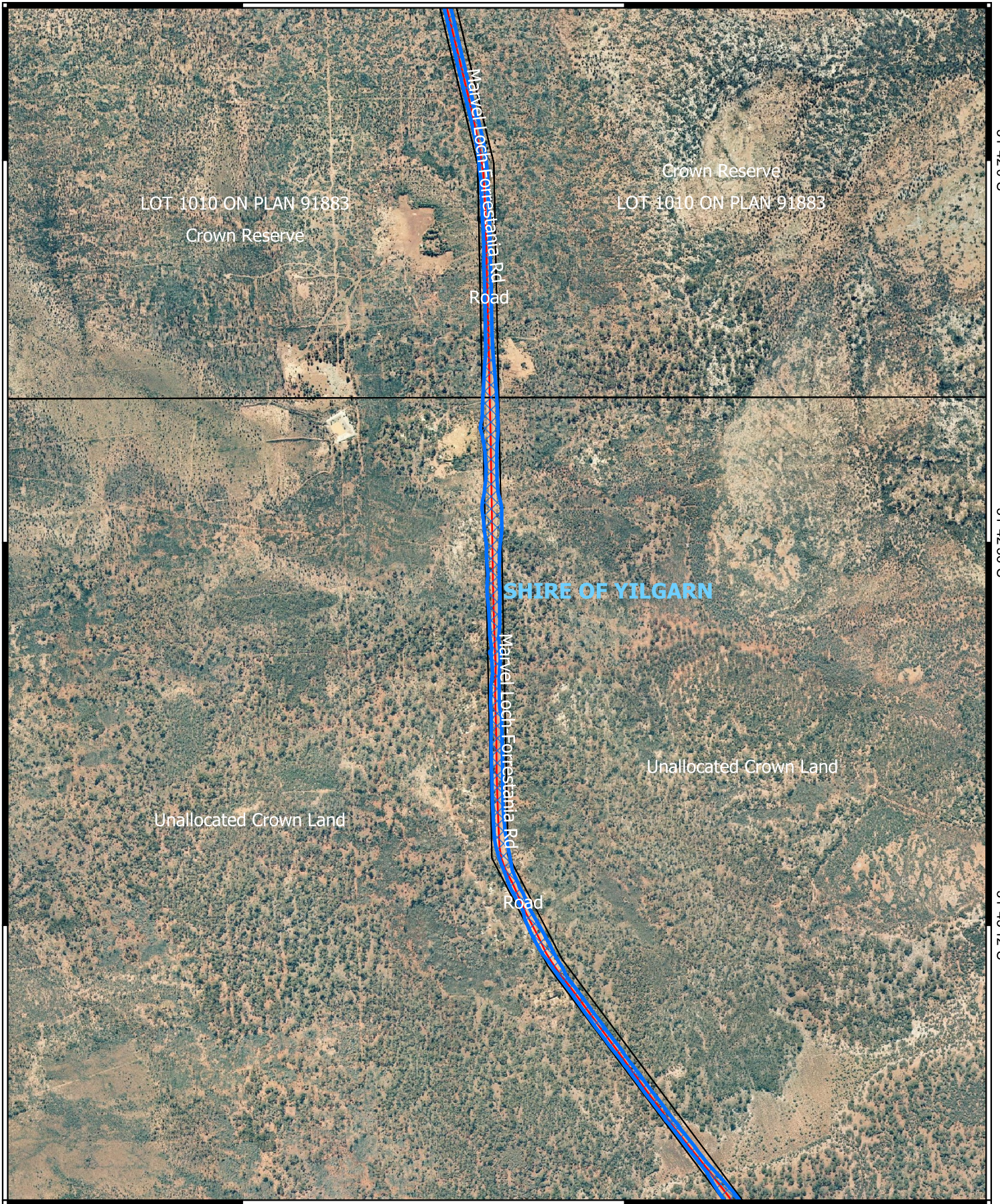
31°42'36"S

31°43'12"S


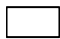

31°43'12"S

119°34'12"E

119°34'48"E



Legend

-  CPS areas applied to clear
-  Land Tenure (LGATE_226) - SLIP
-  Local Government Authorities

Road Centrelines

-  Local Rd - Other



0 100 200 300 400 500 m



1:9,500

Projection: GDA2020



GOVERNMENT OF
WESTERN AUSTRALIA