

CPS 10049/1 - Map K

119°38'24"E

119°39'0"E

119°39'36"E

31°58'12"S

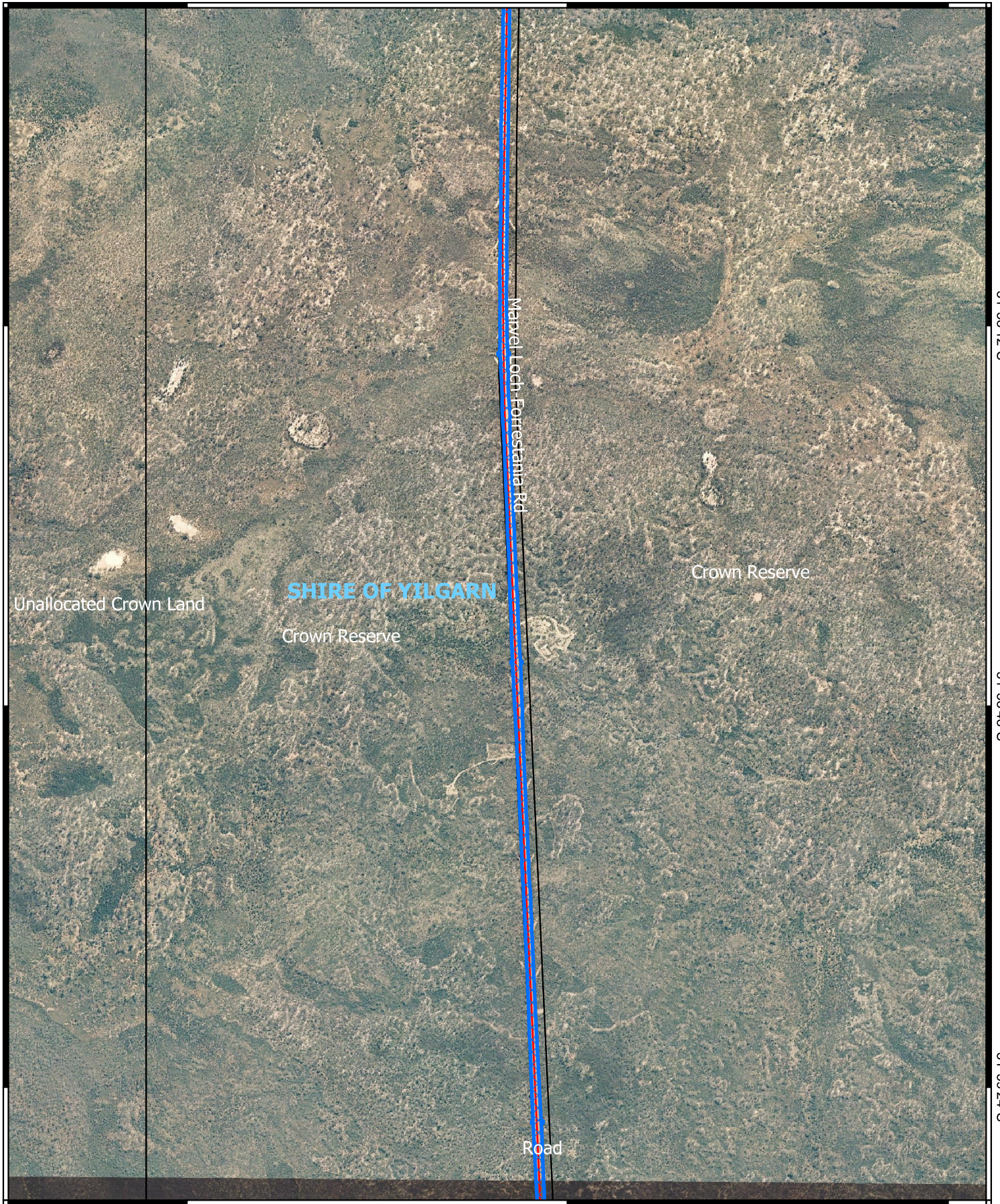
31°58'12"S

31°58'48"S

31°58'48"S

31°59'24"S

31°59'24"S


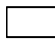



119°38'24"E

119°39'0"E

119°39'36"E

Legend

-  CPS areas applied to clear
-  Land Tenure (LGATE_226) - SLIP
-  Local Government Authorities

Road Centrelines

-  Local Rd - Other



0 100 200 300 400 500 m



1:9,500

Projection: GDA2020



GOVERNMENT OF
WESTERN AUSTRALIA