

# CPS 10049/1 - Map N

119°39'0"E

119°39'36"E

119°40'12"E

32°3'36"S

32°3'36"S

32°4'12"S

32°4'12"S

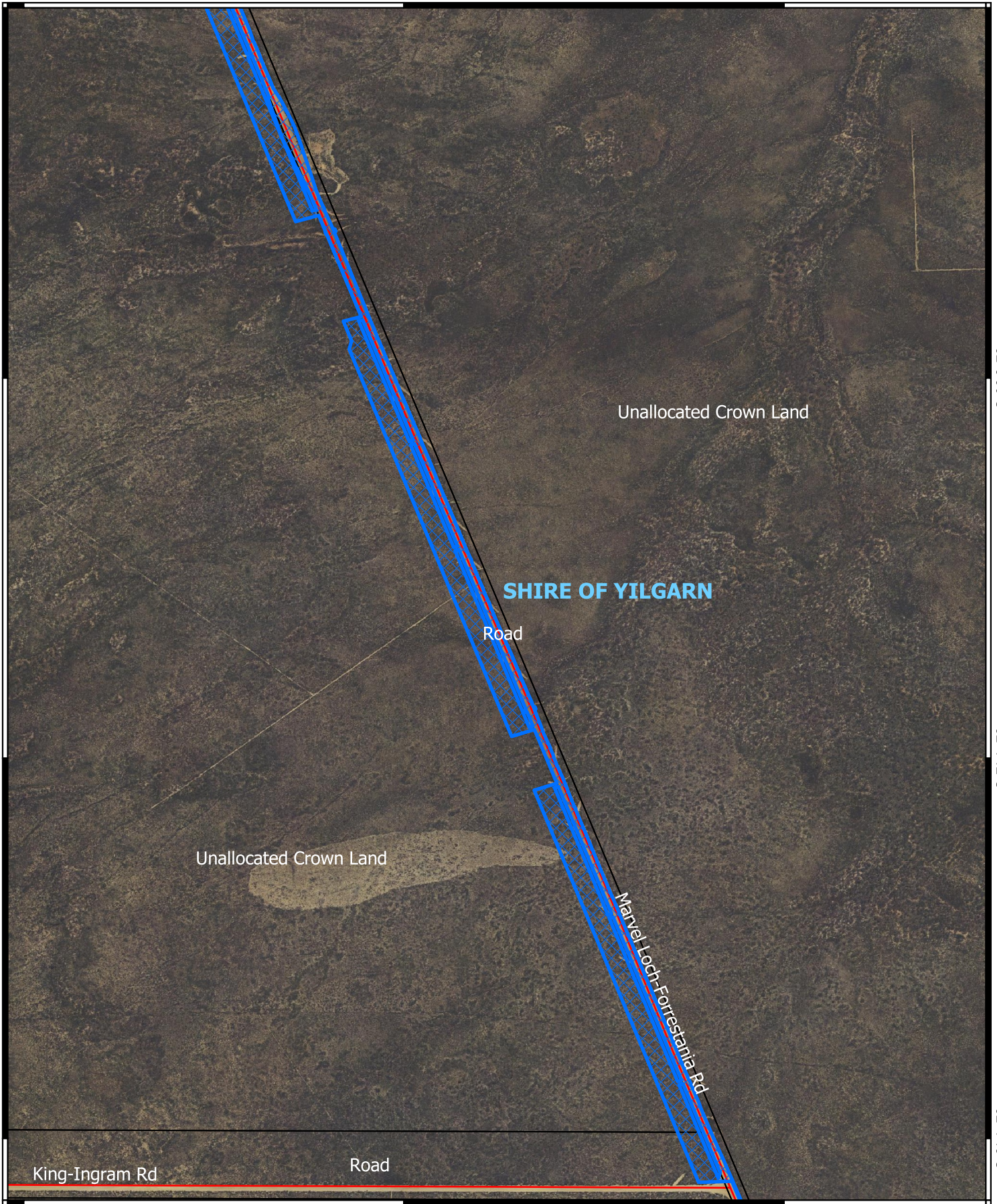
32°4'48"S

32°4'48"S


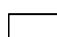

119°39'0"E

119°39'36"E


119°40'12"E



## Legend

-  CPS areas applied to clear
-  Land Tenure (LGATE\_226) - SLIP
-  Local Government Authorities

## Road Centrelines

-  Local Rd - Other



0 100 200 300 400 500 m



1:9,500

Projection: GDA2020



GOVERNMENT OF  
WESTERN AUSTRALIA