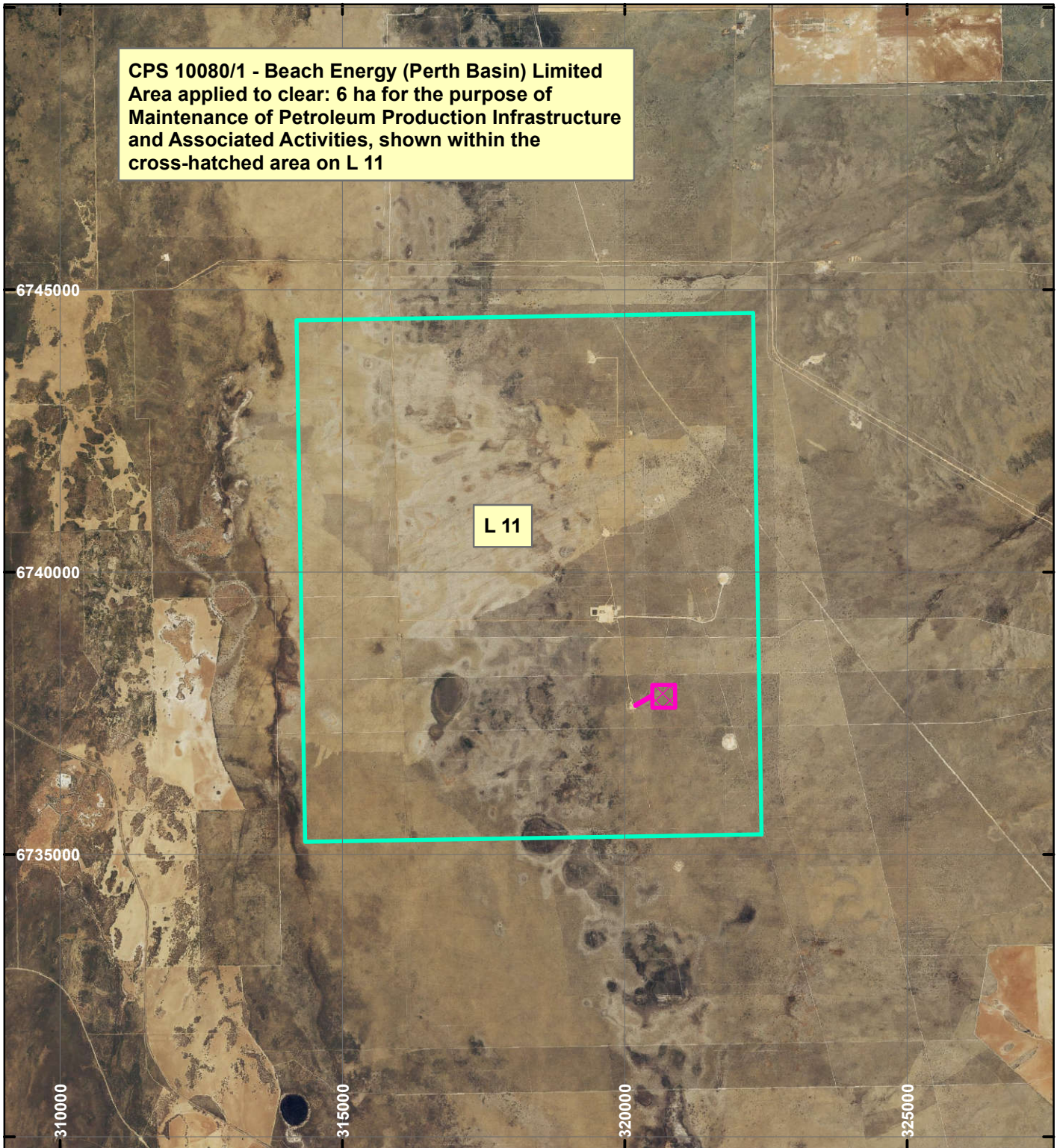


# CPS 10080/1 - Beach Energy (Perth Basin) Limited

CPS 10080/1 - Beach Energy (Perth Basin) Limited  
Area applied to clear: 6 ha for the purpose of  
Maintenance of Petroleum Production Infrastructure  
and Associated Activities, shown within the  
cross-hatched area on L 11

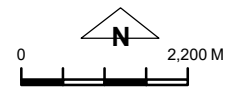


## LEGEND

 Clearing Instruments

 Production Licence

Orthophotography sourced from Landgate



Scale 1:100,000

(Approximate when reproduced at A4)

Geocentric Datum Australia 1994

Note: the data in this map have not been projected. This may result in geometric distortion or measurement inaccuracies.

..... Date .....

Officer with delegated authority under Section 20 of the Environmental Protection Act 1986

Information derived from this map should be confirmed with the data custodian acknowledged by the agency acronym in the legend.



WA Crown Copyright 2002