

CPS 10091/2- Map A

116°27'54"E

116°28'12"E

116°28'30"E

116°28'48"E

32°48'0"S

32°48'18"S

32°48'36"S

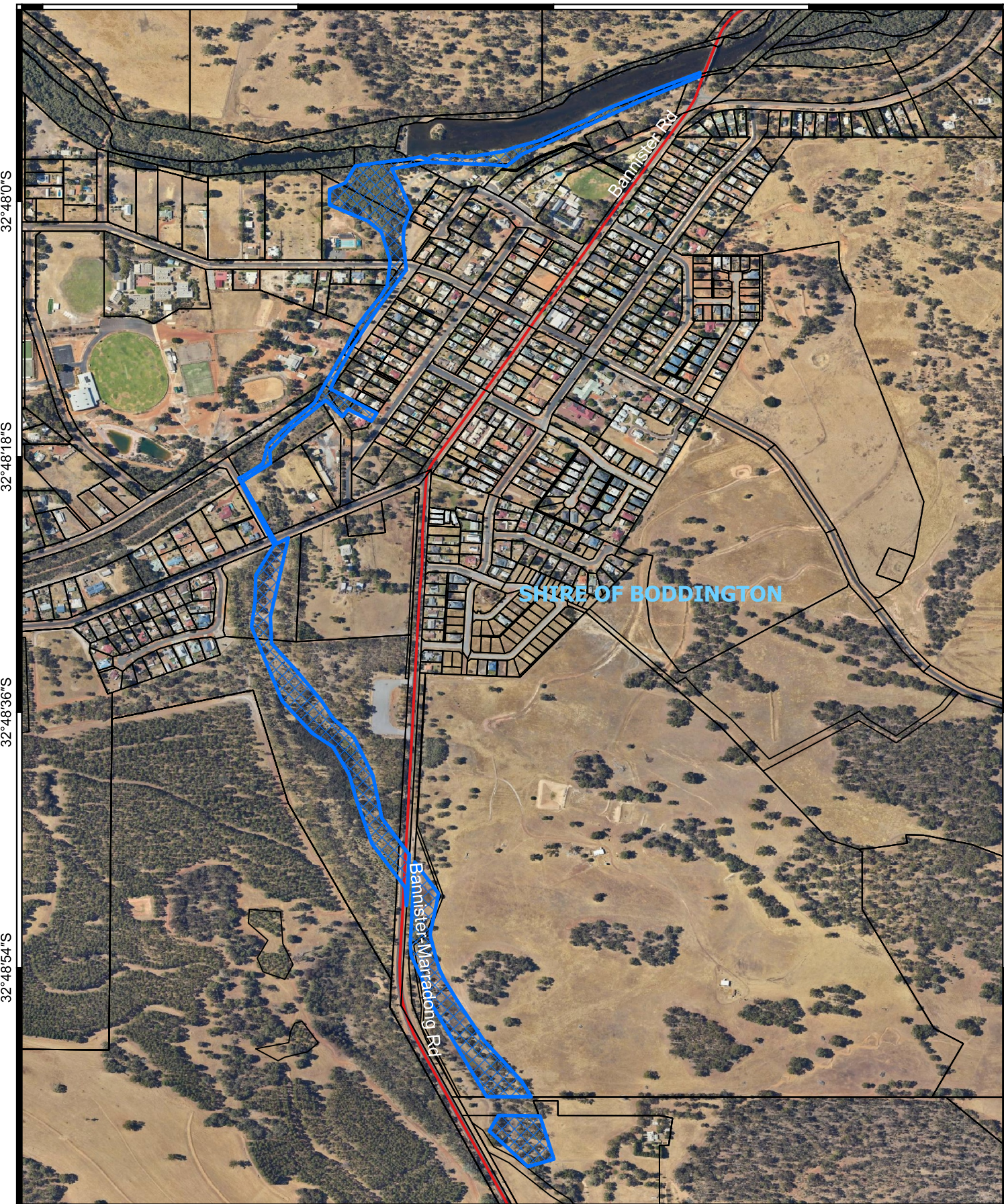
32°48'54"S

32°48'0"S

32°48'18"S

32°48'36"S

32°48'54"S




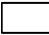

116°27'54"E

116°28'12"E

116°28'30"E

116°28'48"E

Legend

-  CPS areas applied to clear
-  Land Tenure
-  Local Government Authorities

Roads

-  Main



0 100 200 300 400 500 m



1:7,000

Projection: GDA2020



GOVERNMENT OF
WESTERN AUSTRALIA