

# CPS 10114/1 - Map C

116°30'0"E

116°36'0"E

116°42'0"E

26°48'0"S

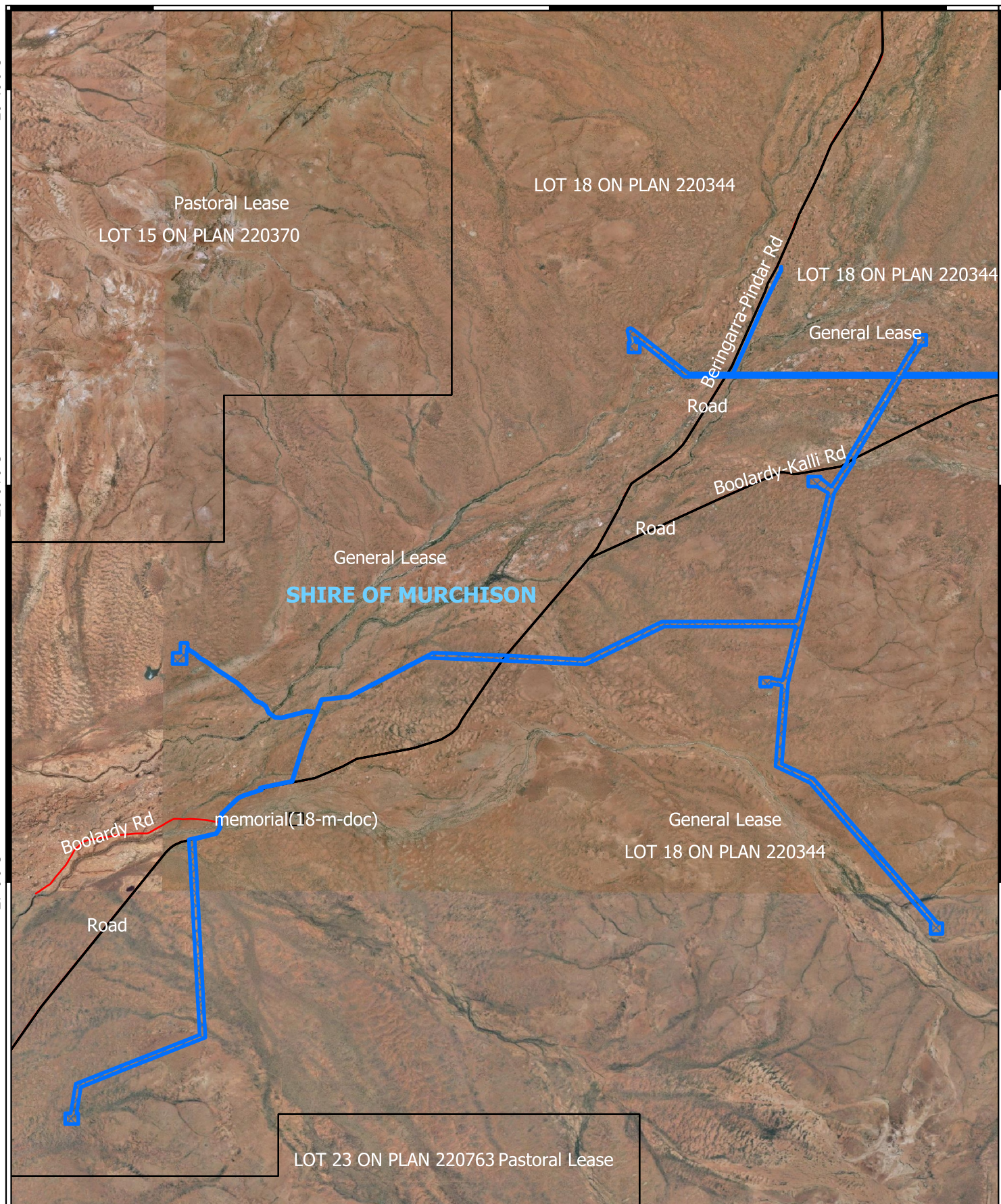
26°48'0"S

26°54'0"S

26°54'0"S

27°0'0"S

27°0'0"S


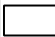



116°30'0"E

116°36'0"E

116°42'0"E

## Legend

-  CPS areas applied to clear
-  Land Tenure (LGATE\_226) - SLIP
-  Local Government Authorities

## Road Centrelines

-  Local Rd - Other



0 2 4 6 km



1:100,000

Projection: GDA2020



GOVERNMENT OF  
WESTERN AUSTRALIA