

CPS 10114/1 - Map D

116°48'0"E

116°54'0"E

117°0'0"E

26°42'0"S

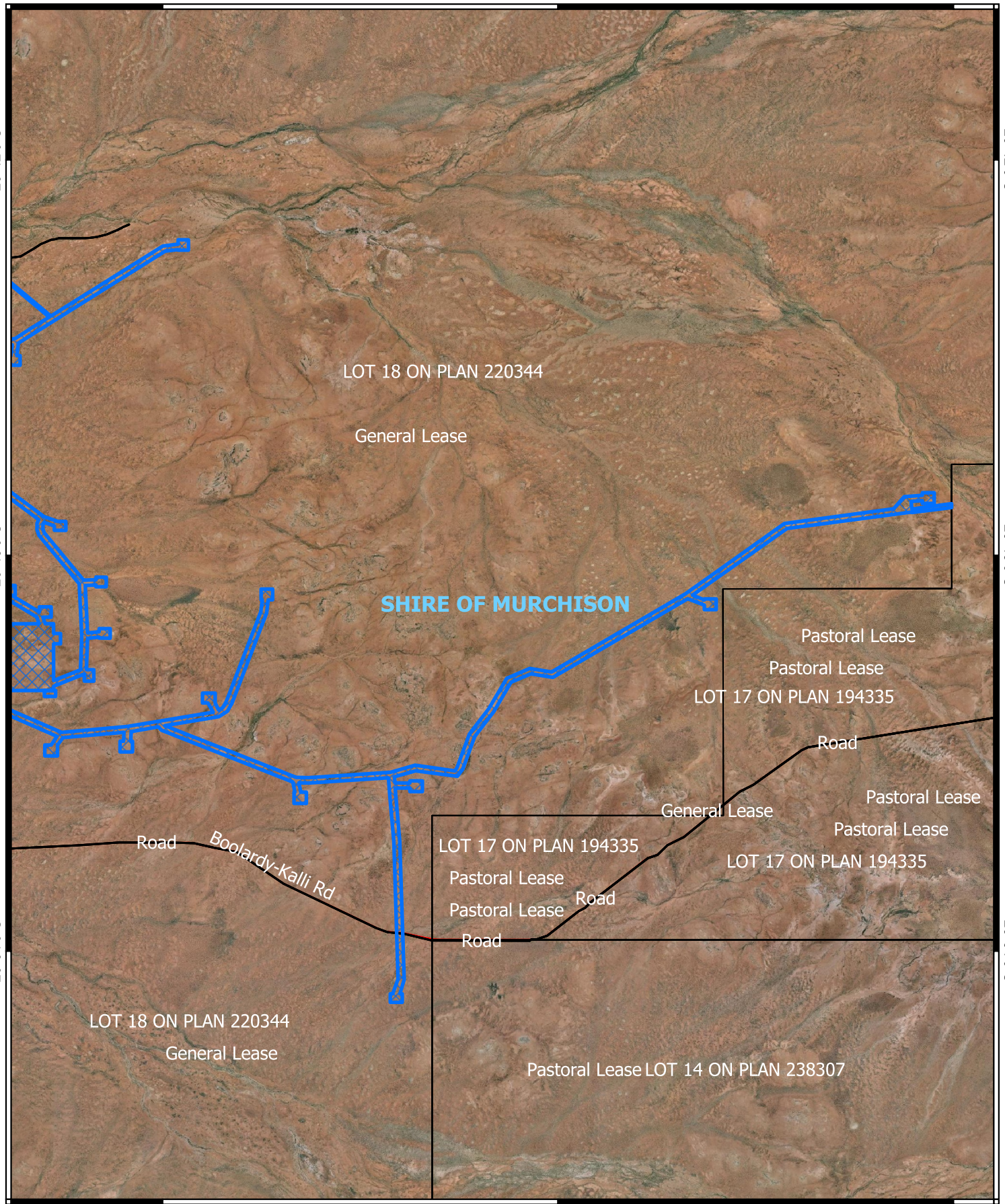
26°42'0"S

26°48'0"S

26°48'0"S

26°54'0"S

26°54'0"S


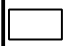



116°48'0"E

116°54'0"E

117°0'0"E

Legend

-  CPS areas applied to clear
-  Land Tenure (LGATE_226) - SLIP
-  Local Government Authorities

Road Centrelines

-  Local Rd - Other



0 2 4 6 km



1:100,000

Projection: GDA2020



GOVERNMENT OF
WESTERN AUSTRALIA