

Appendix 2. *Goodenia laevis* subsp. *laevis* P3 - Population data to support conservation status downgrade

DESCRIPTION

Stems ribbed. Leaves flat, 15-20 mm long, 1-2 mm wide, absent (leaves glabrous); margins entire. Bracteoles present, 2-3.5 mm long, glabrous. Flowers Presence pedicellate, the pedicels 2-3.5 mm long, glabrous. Calyx lobes present, Calyx length 4.2-6 mm long, glabrous. Corolla yellow, 10-20 mm long, without auricles, not spurred, glabrous on the outside, hairy on the inside; central lobes 4.3-6 mm long, with wings; outer lobes 6.2-10 mm long, wing present on both sides and clearly unequal, 0.5-1.5 mm wide on the narrower side, 1-2 mm wide on the broader side. Anthers free. Ovary inferior, not gibbose; style 6.5-8 mm long, hairy; indusium single, hairy; ovules more than two. Flowers in August, September, October, November and December. Occurs in the Coolgardie (COO) and Mallee (MAL) IBRA Region(s), of the Eremaean (E) and South West (SW) Botanical Province. Conservation Code: Conservation code Priority Three (P3).



NOTES

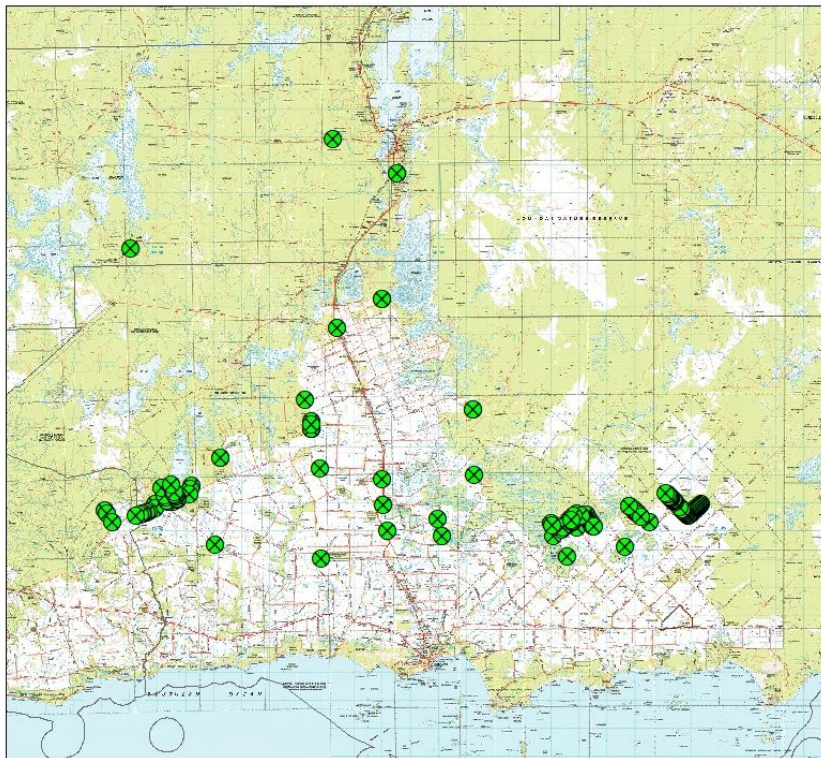
Goodenia laevis subsp. *laevis* occurs across a large geographical area from northwest of Cascade, east to Cape Arid and north to Norseman, extending into the Bremer Range. The extent of occurrence (defined under IUCN Criteria as the area contained within the shortest continuous imaginary boundary which can be drawn to encompass all known, inferred or projected sites of present occurrence) for *Goodenia laevis* subsp. *laevis* is more than 18,000 km². Map showing known current locations is below. Surveys by consultant EcoScape in 2013 as part of the State Barrier Fence surveys located more than 12,000 plants along the UCL/PP interface. This work was limited to approximately 1km north of the UCL/PP boundary. It is quite likely that the populations located in these areas extend into the UCL to the north.

The species is frequently encountered across the Cascade area east to Scaddan and Beaumont areas as part of DBCA district flora surveys. More intense surveys (similar to the EcoScape surveys) would likely record 1000s more plants across its range.

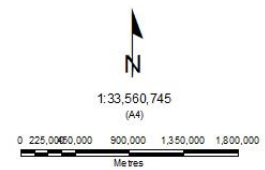
Current records estimate 14,000+ plants across its range. This doesn't include records where plants are recorded as locally abundant or common.

The table below lists the current known population records.

An additional table lists the populations recorded by Ecoscape in 2013/14.



Distribution of *Goodenia laevis* subsp. *laevis* P3



GD494 MGA Zone 51



Produced by the
Department of
Biodiversity, Conservation
and Attractions



Graticule shown at 6 seconds intervals
Grid shown at 250 metre intervals

The Dept. of Biodiversity, Conservation and Attractions does not guarantee that this map is without flaw of any kind and disclaims all liability for any errors, loss or other consequence which may arise from relying on any information depicted.

Roads and tracks on land managed by DBCA may contain unmarked hazards and their surface condition is variable. Exercise caution and drive to conditions on all roads.

Produced at 4:4pm, on Apr 30, 2020

| <i>Goodenia laevis</i> subsp. <i>laevis</i> P3 population data | | | | |
|---|-------------------------------------|--------------------|-------------------|--------------------------------|
| Location | GPS location | Date Survey | No. Plants | Herbarium reference |
| Reserve 19965 and adjacent road reserve | 6306425 367697 | 05/02/2022 | 600+ | Recently submitted. KSW3122 |
| Norwood Road SLK 1.49. Road Reserve | 6297929 419330 | 27/02/2022 | 25 | Recently submitted. KSW3722 |
| Dalyup Rd. SLK 14.43-15.91. Growing along road shoulder within road reserve. | 6283220 368591 | 16/02/2022 | 500+ | Recently submitted. KSW3422 |
| Swan Lagoon Road. SLK 20.93. Growing along road shoulder within road reserve. | 6310304 367516 | 05/02/2022 | 25 | Recently submitted. KSW3222 |
| Cascade Rd. SLK 94.17 | 33.233559 120.739908 | 25/1/2022 | 25 | |
| West Point Rd, 300m from intersection of Cascade Rd and West Point Rd. | 33° 20' 3.2" S 120° 50' 49.3" E | 17/09/2020 | 25 | PERTH 09139338 |
| Wilhaust Street, Cascade townsite | 33° 28' 5.4" S 121° 4' 14.0" E | 9/12/2019 | 15 | PERTH 09196420 |
| Speddingup NR, NE boundary | 33° 31' 1.8" S 121° 28' 33.6" E | 22/11/2016 | 100 | PERTH 09139338 |
| EcoScape Surveys from State Barrier Fence assessment 2013 | Locations in table below | 2013 | 12,026 | Dataset below |
| Beaumont Nature Reserve | 33° 22' 10.1" S 122° 40' 27.3" E | 25/11/2013 | 30+ | PERTH 09062211 |
| PP/UCL interface (EcoScape SBF surveys) | 33° 2' 47.8" S 122° 3' 54.3" E | 5/11/2013 | 50+ | PERTH 09062203 |
| N boundary of Beaumont NR. 1.5km east of Mount Beaumont | 33° 21' 26.6" S 122° 39' 35.6" E | 23/10/2013 | 200+ | PERTH 09062238 |
| N side of Heywood Road ca 4 km N of Karl Berg junction in old limestone pit, Condingup | 33° 29' 17.1" S 122° 38' 36.1" E | 29/11/2009 | 2-5 | PERTH 08111928 |
| Bremer Range; c. 50 km S of Hyden-Norseman Road on Maggie Hayes Ninety Mile Tanks track, then E on track to Lake Medcalf for 5-8 km then N on 4WD track for 1.5 km then W along gridline at AGD84 6400000 m | 32° 30' 57.5" S 120° 46' 25.5" E | 16/3/2005 | occasional | PERTH 07218923 |
| 1.5 km W of Fields Road on Grass Patch West Road | 33° 13' 48.0" S 121° 28' 39.0" E | 16/1/2004 | 100+ | PERTH 07184859 |

| | | | | |
|--|-------------------------------------|------------|---------------------|----------------|
| Norseman, Coolgardie region | 32° 17' 14.1" S 121° 47' 6.3" E | 20/09/2001 | Unknown | PERTH 07400330 |
| New Hyden/Norseman track, ca 17 km W of Great Eastern Highway, | 32° 10' 26.4" S 121° 32' 44.3" E | 13/04/1999 | occasional | PERTH 05400562 |
| W side Kau Rock Road ca 300 m N of Mount Ney Road, NE of Esperance, | 33° 27' 13.4" S 122° 22' 8.3" E | 20/11/1998 | occasional | PERTH 05645115 |
| Grass Patch, 3.9 km S of Grass Patch Track near railway line, E side of Coolgardie Esperance Highway. 5.9 km N of Sime (Rhind?) Road. Roe District | 33° 15' 58.0" S 121° 42' 56.0" E | 15/1/2003 | Moderately common | PERTH 06374417 |
| 28 km NNW of Condingup, Kay Rock Road, NE of Esperance | 33° 31' 5.0" S 122° 25' 9.0" E | 31/12/1995 | Scattered in clumps | PERTH 05083575 |
| Scaddan Road between Norseman-Esperance Highway and rail crossing | 33° 26' 0.0" S 121° 44' 0.0" E | 24/12/1995 | Locally abundant | PERTH 04256131 |
| Oldfield 1343 [This location is 28 km NW of Cascade as advised by collector 23/8/2001] | 33° 19' 42.6" S 120° 54' 54.6" E | 07/12/1993 | Unknown | PERTH 04111648 |

ECOSCAPE STATE BARRIER FENCE SURVEY DATA 2013

| FID | Shape | Species | Cons_WA | Abund | Samp_Point | East_GDA94 | North_GDA9 | Zone | Date |
|------|-------|-------------------------------|-------------------|-------|--------------|------------|-------------|------|------------|
| 283 | Point | Goodenia laevis subsp. laevis | Priority 3 (DPaW) | 1 | JKN-FIOp-1 | 355151.596 | 6336150.712 | 51 | 15/10/2013 |
| 284 | Point | Goodenia laevis subsp. laevis | Priority 3 (DPaW) | 1 | JKN-FIOp-2 | 355142.536 | 6336144.811 | 51 | 15/10/2013 |
| 286 | Point | Goodenia laevis subsp. laevis | Priority 3 (DPaW) | 1 | JKN-FIOp-4 | 355151.347 | 6336161.244 | 51 | 15/10/2013 |
| 287 | Point | Goodenia laevis subsp. laevis | Priority 3 (DPaW) | 2 | JKN-FIOp-5 | 355170.279 | 6336174.944 | 51 | 15/10/2013 |
| 288 | Point | Goodenia laevis subsp. laevis | Priority 3 (DPaW) | 2 | JKN-FIOp-6 | 355142.093 | 6336319.809 | 51 | 15/10/2013 |
| 433 | Point | Goodenia laevis subsp. laevis | Priority 3 (DPaW) | 4 | JKN-FIOp-196 | 412904.416 | 6319815.81 | 51 | 22/10/2013 |
| 835 | Point | Goodenia laevis subsp. laevis | Priority 3 (DPaW) | 40 | JKN-FIOp-688 | 380395.424 | 6382424.952 | 51 | 6/11/2013 |
| 836 | Point | Goodenia laevis subsp. laevis | Priority 3 (DPaW) | 5 | JKN-FIOp-689 | 380442.786 | 6382307.099 | 51 | 6/11/2013 |
| 885 | Point | Goodenia laevis subsp. laevis | Priority 3 (DPaW) | 15 | af-FIOp-39 | 449534.39 | 6306292.038 | 51 | 21/10/2013 |
| 886 | Point | Goodenia laevis subsp. laevis | Priority 3 (DPaW) | 15 | af-FIOp-40 | 449582.136 | 6306179.308 | 51 | 21/10/2013 |
| 892 | Point | Goodenia laevis subsp. laevis | Priority 3 (DPaW) | 10 | af-FIOp-49 | 451039.101 | 6305410.127 | 51 | 21/10/2013 |
| 894 | Point | Goodenia laevis subsp. laevis | Priority 3 (DPaW) | 10 | af-FIOp-51 | 450748.443 | 6305613.322 | 51 | 21/10/2013 |
| 895 | Point | Goodenia laevis subsp. laevis | Priority 3 (DPaW) | 50 | af-FIOp-56 | 447633.102 | 6304080.794 | 51 | 22/10/2013 |
| 1052 | Point | Goodenia laevis subsp. laevis | Priority 3 (DPaW) | 1 | RD-FIOp-161 | 445901.051 | 6302602.753 | 51 | 2/11/2013 |

| | | | | | | | | | |
|------|-------|-------------------------------|-------------------|----|-------------|------------|-------------|----|-----------|
| 1053 | Point | Goodenia laevis subsp. laevis | Priority 3 (DPaW) | 25 | RD-FIOp-162 | 445853.188 | 6302549.044 | 51 | 2/11/2013 |
| 1054 | Point | Goodenia laevis subsp. laevis | Priority 3 (DPaW) | 25 | RD-FIOp-163 | 445793.574 | 6302518.22 | 51 | 2/11/2013 |
| 1055 | Point | Goodenia laevis subsp. laevis | Priority 3 (DPaW) | 25 | RD-FIOp-164 | 445793.574 | 6302518.22 | 51 | 2/11/2013 |
| 1056 | Point | Goodenia laevis subsp. laevis | Priority 3 (DPaW) | 25 | RD-FIOp-165 | 445725.457 | 6302445.216 | 51 | 2/11/2013 |
| 1057 | Point | Goodenia laevis subsp. laevis | Priority 3 (DPaW) | 25 | RD-FIOp-166 | 445662.013 | 6302384.656 | 51 | 2/11/2013 |
| 1058 | Point | Goodenia laevis subsp. laevis | Priority 3 (DPaW) | 25 | RD-FIOp-167 | 445547.822 | 6302238.105 | 51 | 2/11/2013 |
| 1059 | Point | Goodenia laevis subsp. laevis | Priority 3 (DPaW) | 25 | RD-FIOp-168 | 445519.598 | 6302164.88 | 51 | 2/11/2013 |
| 1061 | Point | Goodenia laevis subsp. laevis | Priority 3 (DPaW) | 25 | RD-FIOp-170 | 445463.406 | 6302137.732 | 51 | 2/11/2013 |
| 1063 | Point | Goodenia laevis subsp. laevis | Priority 3 (DPaW) | 40 | RD-FIOp-172 | 445395.966 | 6302077.591 | 51 | 2/11/2013 |
| 1064 | Point | Goodenia laevis subsp. laevis | Priority 3 (DPaW) | 40 | RD-FIOp-173 | 445324.801 | 6301952.678 | 51 | 2/11/2013 |
| 1068 | Point | Goodenia laevis subsp. laevis | Priority 3 (DPaW) | 20 | RD-FIOp-177 | 444299.346 | 6300828.11 | 51 | 2/11/2013 |
| 1072 | Point | Goodenia laevis subsp. laevis | Priority 3 (DPaW) | 20 | RD-FIOp-181 | 444134.361 | 6300614.28 | 51 | 2/11/2013 |
| 1074 | Point | Goodenia laevis subsp. laevis | Priority 3 (DPaW) | 5 | RD-FIOp-183 | 440417.47 | 6302703.248 | 51 | 2/11/2013 |
| 1644 | Point | Goodenia laevis subsp. laevis | Priority 3 (DPaW) | 50 | SK-FIOp-186 | 447411.688 | 6304421.636 | 51 | 2/11/2013 |
| 1645 | Point | Goodenia laevis subsp. laevis | Priority 3 (DPaW) | 50 | SK-FIOp-187 | 447371.256 | 6304366.202 | 51 | 2/11/2013 |

| | | | | | | | | | |
|------|-------|-------------------------------|-------------------|-----|-------------|------------|-------------|----|------------|
| 1647 | Point | Goodenia laevis subsp. laevis | Priority 3 (DPaW) | 100 | SK-FIOp-189 | 447226.281 | 6304228.152 | 51 | 2/11/2013 |
| 1649 | Point | Goodenia laevis subsp. laevis | Priority 3 (DPaW) | 200 | SK-FIOp-191 | 447037.325 | 6303953.929 | 51 | 2/11/2013 |
| 1650 | Point | Goodenia laevis subsp. laevis | Priority 3 (DPaW) | 200 | SK-FIOp-192 | 446996.516 | 6303951.045 | 51 | 2/11/2013 |
| 1651 | Point | Goodenia laevis subsp. laevis | Priority 3 (DPaW) | 200 | SK-FIOp-193 | 446955.823 | 6303893.168 | 51 | 2/11/2013 |
| 1652 | Point | Goodenia laevis subsp. laevis | Priority 3 (DPaW) | 200 | SK-FIOp-194 | 446860.358 | 6303767.469 | 51 | 2/11/2013 |
| 1653 | Point | Goodenia laevis subsp. laevis | Priority 3 (DPaW) | 200 | SK-FIOp-195 | 445220.477 | 6301904.523 | 51 | 2/11/2013 |
| 1655 | Point | Goodenia laevis subsp. laevis | Priority 3 (DPaW) | 200 | SK-FIOp-197 | 445114.457 | 6301778.413 | 51 | 2/11/2013 |
| 1658 | Point | Goodenia laevis subsp. laevis | Priority 3 (DPaW) | 200 | SK-FIOp-200 | 444967.73 | 6301601.401 | 51 | 2/11/2013 |
| 1659 | Point | Goodenia laevis subsp. laevis | Priority 3 (DPaW) | 200 | SK-FIOp-201 | 444857.711 | 6301476.706 | 51 | 2/11/2013 |
| 1662 | Point | Goodenia laevis subsp. laevis | Priority 3 (DPaW) | 200 | SK-FIOp-204 | 444773.786 | 6301390.522 | 51 | 2/11/2013 |
| 1666 | Point | Goodenia laevis subsp. laevis | Priority 3 (DPaW) | 50 | SK-FIOp-208 | 444618.873 | 6301200.042 | 51 | 2/11/2013 |
| 1686 | Point | Goodenia laevis subsp. laevis | Priority 3 (DPaW) | 50 | SK-FIOp-230 | 440964.209 | 6302170.744 | 51 | 2/11/2013 |
| 1803 | Point | Goodenia laevis subsp. laevis | Priority 3 (DPaW) | 50 | SK-FIOp-369 | 412707.579 | 6343156.341 | 51 | 5/11/2013 |
| 1997 | Point | Goodenia laevis subsp. laevis | Priority 3 (DPaW) | 30 | SK-FIOp-588 | 469696.165 | 6307705.751 | 51 | 25/11/2013 |
| 1998 | Point | Goodenia laevis subsp. laevis | Priority 3 (DPaW) | 30 | SK-FIOp-589 | 469835.723 | 6307579.908 | 51 | 25/11/2013 |

| | | | | | | | | | |
|------|-------|-------------------------------|-------------------|-----|-------------|------------|-------------|----|------------|
| 1999 | Point | Goodenia laevis subsp. laevis | Priority 3 (DPaW) | 30 | SK-FIOp-590 | 470044.656 | 6307369.462 | 51 | 25/11/2013 |
| 2000 | Point | Goodenia laevis subsp. laevis | Priority 3 (DPaW) | 30 | SK-FIOp-591 | 470044.656 | 6307369.462 | 51 | 25/11/2013 |
| 2001 | Point | Goodenia laevis subsp. laevis | Priority 3 (DPaW) | 30 | SK-FIOp-592 | 470554.869 | 6306885.533 | 51 | 25/11/2013 |
| 2002 | Point | Goodenia laevis subsp. laevis | Priority 3 (DPaW) | 30 | SK-FIOp-593 | 470644.473 | 6306784.36 | 51 | 25/11/2013 |
| 2003 | Point | Goodenia laevis subsp. laevis | Priority 3 (DPaW) | 30 | SK-FIOp-594 | 470810.507 | 6306630.311 | 51 | 25/11/2013 |
| 2004 | Point | Goodenia laevis subsp. laevis | Priority 3 (DPaW) | 30 | SK-FIOp-595 | 470929.995 | 6306518.915 | 51 | 25/11/2013 |
| 2005 | Point | Goodenia laevis subsp. laevis | Priority 3 (DPaW) | 30 | SK-FIOp-596 | 471594.473 | 6305858.669 | 51 | 25/11/2013 |
| 2007 | Point | Goodenia laevis subsp. laevis | Priority 3 (DPaW) | 10 | SK-FIOp-598 | 472385.761 | 6305084.435 | 51 | 25/11/2013 |
| 2117 | Point | Goodenia laevis subsp. laevis | Priority 3 (DPaW) | 200 | SK-FIOp-708 | 322874.736 | 6326196.43 | 51 | 28/11/2013 |
| 2118 | Point | Goodenia laevis subsp. laevis | Priority 3 (DPaW) | 200 | SK-FIOp-709 | 322885.361 | 6326160.905 | 51 | 28/11/2013 |
| 2120 | Point | Goodenia laevis subsp. laevis | Priority 3 (DPaW) | 20 | SK-FIOp-711 | 312332.269 | 6316241.842 | 51 | 28/11/2013 |
| 2125 | Point | Goodenia laevis subsp. laevis | Priority 3 (DPaW) | 10 | SK-FIOp-716 | 312046.73 | 6314928.19 | 51 | 28/11/2013 |
| 2135 | Point | Goodenia laevis subsp. laevis | Priority 3 (DPaW) | 30 | SK-FIOp-726 | 311619.687 | 6313042.904 | 51 | 28/11/2013 |
| 2136 | Point | Goodenia laevis subsp. laevis | Priority 3 (DPaW) | 50 | SK-FIOp-727 | 304077.691 | 6310318.169 | 51 | 29/11/2013 |
| 2137 | Point | Goodenia laevis subsp. laevis | Priority 3 (DPaW) | 50 | SK-FIOp-728 | 303898.186 | 6310647.366 | 51 | 29/11/2013 |

| | | | | | | | | | |
|------|-------|-------------------------------|-------------------|-----|-----------------|------------|-------------|----|------------|
| 2138 | Point | Goodenia laevis subsp. laevis | Priority 3 (DPaW) | 50 | SK-FIOp-729 | 303248.307 | 6311978.932 | 51 | 29/11/2013 |
| 2139 | Point | Goodenia laevis subsp. laevis | Priority 3 (DPaW) | 50 | SK-FIOp-730 | 302927.014 | 6312645.608 | 51 | 29/11/2013 |
| 2140 | Point | Goodenia laevis subsp. laevis | Priority 3 (DPaW) | 50 | SK-FIOp-731 | 301903.175 | 6315330.65 | 51 | 29/11/2013 |
| 2145 | Point | Goodenia laevis subsp. laevis | Priority 3 (DPaW) | 50 | SK-FIOp-736 | 306085.731 | 6314008.524 | 51 | 29/11/2013 |
| 2146 | Point | Goodenia laevis subsp. laevis | Priority 3 (DPaW) | 200 | SK-FIOp-740 | 297082.534 | 6307107.145 | 51 | 29/11/2013 |
| 2147 | Point | Goodenia laevis subsp. laevis | Priority 3 (DPaW) | 200 | SK-FIOp-741 | 296453.78 | 6306779.312 | 51 | 29/11/2013 |
| 2148 | Point | Goodenia laevis subsp. laevis | Priority 3 (DPaW) | 200 | SK-FIOp-742 | 295427.733 | 6306234.361 | 51 | 29/11/2013 |
| 2149 | Point | Goodenia laevis subsp. laevis | Priority 3 (DPaW) | 200 | SK-FIOp-743 | 295150.014 | 6306080.377 | 51 | 29/11/2013 |
| 2150 | Point | Goodenia laevis subsp. laevis | Priority 3 (DPaW) | 200 | SK-FIOp-744 | 294071.042 | 6305666.737 | 51 | 29/11/2013 |
| 2152 | Point | Goodenia laevis subsp. laevis | Priority 3 (DPaW) | 50 | SK-FIOp-746 | 292635.631 | 6305399.9 | 51 | 29/11/2013 |
| 2153 | Point | Goodenia laevis subsp. laevis | Priority 3 (DPaW) | 50 | SK-FIOp-747 | 281659.762 | 6307522.801 | 51 | 29/11/2013 |
| 2154 | Point | Goodenia laevis subsp. laevis | Priority 3 (DPaW) | 50 | SK-FIOp-748 | 282351.987 | 6306360.316 | 51 | 29/11/2013 |
| 2155 | Point | Goodenia laevis subsp. laevis | Priority 3 (DPaW) | 50 | SK-FIOp-749 | 284184.778 | 6303282.393 | 51 | 29/11/2013 |
| 2244 | Point | Goodenia laevis subsp. laevis | Priority 3 (DPaW) | 100 | 3087-SK14-FI-23 | 493825.231 | 6309478.581 | 51 | 1/10/2014 |
| 2245 | Point | Goodenia laevis subsp. laevis | Priority 3 (DPaW) | 50 | 3087-SK14-FI-24 | 493514.623 | 6309255.648 | 51 | 1/10/2014 |

| | | | | | | | | | |
|------|-------|-------------------------------|-------------------|----|-----------------|------------|-------------|----|-----------|
| 2246 | Point | Goodenia laevis subsp. laevis | Priority 3 (DPaW) | 50 | 3087-SK14-FI-25 | 492922.358 | 6308716.2 | 51 | 1/10/2014 |
| 2247 | Point | Goodenia laevis subsp. laevis | Priority 3 (DPaW) | 50 | 3087-SK14-FI-26 | 492664.842 | 6308467.889 | 51 | 1/10/2014 |
| 2248 | Point | Goodenia laevis subsp. laevis | Priority 3 (DPaW) | 50 | 3087-SK14-FI-27 | 492664.842 | 6308467.889 | 51 | 1/10/2014 |
| 2249 | Point | Goodenia laevis subsp. laevis | Priority 3 (DPaW) | 50 | 3087-SK14-FI-28 | 492232.074 | 6308101.581 | 51 | 1/10/2014 |
| 2250 | Point | Goodenia laevis subsp. laevis | Priority 3 (DPaW) | 50 | 3087-SK14-FI-29 | 492066.973 | 6307958.207 | 51 | 1/10/2014 |
| 2251 | Point | Goodenia laevis subsp. laevis | Priority 3 (DPaW) | 50 | 3087-SK14-FI-30 | 492066.973 | 6307958.207 | 51 | 1/10/2014 |
| 2252 | Point | Goodenia laevis subsp. laevis | Priority 3 (DPaW) | 50 | 3087-SK14-FI-31 | 491694.674 | 6307639.819 | 51 | 1/10/2014 |
| 2253 | Point | Goodenia laevis subsp. laevis | Priority 3 (DPaW) | 50 | 3087-SK14-FI-32 | 491694.674 | 6307639.819 | 51 | 1/10/2014 |
| 2254 | Point | Goodenia laevis subsp. laevis | Priority 3 (DPaW) | 50 | 3087-SK14-FI-33 | 491299.991 | 6307311.75 | 51 | 1/10/2014 |
| 2255 | Point | Goodenia laevis subsp. laevis | Priority 3 (DPaW) | 50 | 3087-SK14-FI-34 | 490804.321 | 6306881.35 | 51 | 1/10/2014 |
| 2258 | Point | Goodenia laevis subsp. laevis | Priority 3 (DPaW) | 50 | 3087-SK14-FI-37 | 490520.487 | 6306638.389 | 51 | 1/10/2014 |
| 2259 | Point | Goodenia laevis subsp. laevis | Priority 3 (DPaW) | 50 | 3087-SK14-FI-38 | 490238.433 | 6306396.418 | 51 | 1/10/2014 |
| 2260 | Point | Goodenia laevis subsp. laevis | Priority 3 (DPaW) | 50 | 3087-SK14-FI-39 | 490238.433 | 6306396.418 | 51 | 1/10/2014 |
| 2261 | Point | Goodenia laevis subsp. laevis | Priority 3 (DPaW) | 50 | 3087-SK14-FI-40 | 489958.809 | 6306157.103 | 51 | 1/10/2014 |
| 2262 | Point | Goodenia laevis subsp. laevis | Priority 3 (DPaW) | 50 | 3087-SK14-FI-41 | 489958.809 | 6306157.103 | 51 | 1/10/2014 |

| | | | | | | | | | |
|------|-------|-------------------------------|-------------------|-----|-----------------|------------|-------------|----|-----------|
| 2263 | Point | Goodenia laevis subsp. laevis | Priority 3 (DPaW) | 50 | 3087-SK14-FI-42 | 489675.299 | 6305911.123 | 51 | 1/10/2014 |
| 2264 | Point | Goodenia laevis subsp. laevis | Priority 3 (DPaW) | 50 | 3087-SK14-FI-43 | 489434.167 | 6305708.309 | 51 | 1/10/2014 |
| 2265 | Point | Goodenia laevis subsp. laevis | Priority 3 (DPaW) | 50 | 3087-SK14-FI-44 | 489434.167 | 6305708.309 | 51 | 1/10/2014 |
| 2266 | Point | Goodenia laevis subsp. laevis | Priority 3 (DPaW) | 50 | 3087-SK14-FI-45 | 489095.375 | 6305602.831 | 51 | 1/10/2014 |
| 2267 | Point | Goodenia laevis subsp. laevis | Priority 3 (DPaW) | 50 | 3087-SK14-FI-46 | 489095.375 | 6305602.831 | 51 | 1/10/2014 |
| 2268 | Point | Goodenia laevis subsp. laevis | Priority 3 (DPaW) | 50 | 3087-SK14-FI-47 | 488767.695 | 6305946.477 | 51 | 1/10/2014 |
| 2269 | Point | Goodenia laevis subsp. laevis | Priority 3 (DPaW) | 50 | 3087-SK14-FI-48 | 488602.504 | 6306113.029 | 51 | 1/10/2014 |
| 2270 | Point | Goodenia laevis subsp. laevis | Priority 3 (DPaW) | 50 | 3087-SK14-FI-49 | 488602.504 | 6306113.029 | 51 | 1/10/2014 |
| 2271 | Point | Goodenia laevis subsp. laevis | Priority 3 (DPaW) | 50 | 3087-SK14-FI-50 | 488245.652 | 6306476.357 | 51 | 1/10/2014 |
| 2272 | Point | Goodenia laevis subsp. laevis | Priority 3 (DPaW) | 50 | 3087-SK14-FI-51 | 488245.652 | 6306476.357 | 51 | 1/10/2014 |
| 2273 | Point | Goodenia laevis subsp. laevis | Priority 3 (DPaW) | 50 | 3087-SK14-FI-52 | 487871.902 | 6306868.255 | 51 | 1/10/2014 |
| 2274 | Point | Goodenia laevis subsp. laevis | Priority 3 (DPaW) | 50 | 3087-SK14-FI-53 | 487871.902 | 6306868.255 | 51 | 1/10/2014 |
| 2275 | Point | Goodenia laevis subsp. laevis | Priority 3 (DPaW) | 50 | 3087-SK14-FI-54 | 487466.361 | 6307291.362 | 51 | 1/10/2014 |
| 2276 | Point | Goodenia laevis subsp. laevis | Priority 3 (DPaW) | 100 | 3087-SK14-FI-55 | 487466.361 | 6307291.362 | 51 | 1/10/2014 |
| 2277 | Point | Goodenia laevis subsp. laevis | Priority 3 (DPaW) | 100 | 3087-SK14-FI-56 | 487124.142 | 6307639.147 | 51 | 1/10/2014 |

| | | | | | | | | | |
|------|-------|-------------------------------|-------------------|-----|-----------------|------------|-------------|----|-----------|
| 2278 | Point | Goodenia laevis subsp. laevis | Priority 3 (DPaW) | 100 | 3087-SK14-FI-57 | 487124.142 | 6307639.147 | 51 | 1/10/2014 |
| 2279 | Point | Goodenia laevis subsp. laevis | Priority 3 (DPaW) | 100 | 3087-SK14-FI-58 | 486835.649 | 6307932.446 | 51 | 1/10/2014 |
| 2280 | Point | Goodenia laevis subsp. laevis | Priority 3 (DPaW) | 100 | 3087-SK14-FI-59 | 486835.649 | 6307932.446 | 51 | 1/10/2014 |
| 2281 | Point | Goodenia laevis subsp. laevis | Priority 3 (DPaW) | 100 | 3087-SK14-FI-60 | 486368.435 | 6308419.393 | 51 | 1/10/2014 |
| 2282 | Point | Goodenia laevis subsp. laevis | Priority 3 (DPaW) | 100 | 3087-SK14-FI-61 | 484616.839 | 6310237.982 | 51 | 1/10/2014 |
| 2283 | Point | Goodenia laevis subsp. laevis | Priority 3 (DPaW) | 100 | 3087-SK14-FI-62 | 484416.651 | 6310436.114 | 51 | 1/10/2014 |
| 2284 | Point | Goodenia laevis subsp. laevis | Priority 3 (DPaW) | 100 | 3087-SK14-FI-63 | 484013.894 | 6310851.43 | 51 | 1/10/2014 |
| 2285 | Point | Goodenia laevis subsp. laevis | Priority 3 (DPaW) | 100 | 3087-SK14-FI-64 | 484013.894 | 6310851.43 | 51 | 1/10/2014 |
| 2286 | Point | Goodenia laevis subsp. laevis | Priority 3 (DPaW) | 100 | 3087-SK14-FI-65 | 483750.462 | 6311125.609 | 51 | 1/10/2014 |
| 2287 | Point | Goodenia laevis subsp. laevis | Priority 3 (DPaW) | 100 | 3087-SK14-FI-66 | 483750.462 | 6311125.609 | 51 | 1/10/2014 |
| 2288 | Point | Goodenia laevis subsp. laevis | Priority 3 (DPaW) | 100 | 3087-SK14-FI-67 | 483338.796 | 6311547.091 | 51 | 1/10/2014 |
| 2289 | Point | Goodenia laevis subsp. laevis | Priority 3 (DPaW) | 100 | 3087-SK14-FI-68 | 483338.796 | 6311547.091 | 51 | 1/10/2014 |
| 2290 | Point | Goodenia laevis subsp. laevis | Priority 3 (DPaW) | 100 | 3087-SK14-FI-69 | 482986.67 | 6311908.238 | 51 | 1/10/2014 |
| 2291 | Point | Goodenia laevis subsp. laevis | Priority 3 (DPaW) | 100 | 3087-SK14-FI-70 | 482858.283 | 6312041.828 | 51 | 1/10/2014 |
| 2292 | Point | Goodenia laevis subsp. laevis | Priority 3 (DPaW) | 100 | 3087-SK14-FI-71 | 482707.323 | 6312201.873 | 51 | 1/10/2014 |

| | | | | | | | | | |
|------|-------|-------------------------------|-------------------|-----|-----------------|------------|-------------|----|-----------|
| 2293 | Point | Goodenia laevis subsp. laevis | Priority 3 (DPaW) | 100 | 3087-SK14-FI-72 | 482419.954 | 6312496.594 | 51 | 1/10/2014 |
| 2294 | Point | Goodenia laevis subsp. laevis | Priority 3 (DPaW) | 100 | 3087-SK14-FI-73 | 481912.674 | 6313020.172 | 51 | 1/10/2014 |
| 2295 | Point | Goodenia laevis subsp. laevis | Priority 3 (DPaW) | 100 | 3087-SK14-FI-74 | 481912.674 | 6313020.172 | 51 | 1/10/2014 |
| 2296 | Point | Goodenia laevis subsp. laevis | Priority 3 (DPaW) | 100 | 3087-SK14-FI-75 | 481408.231 | 6313588.962 | 51 | 2/10/2014 |
| 2297 | Point | Goodenia laevis subsp. laevis | Priority 3 (DPaW) | 100 | 3087-SK14-FI-78 | 451590.881 | 6305267.549 | 51 | 3/10/2014 |
| 2298 | Point | Goodenia laevis subsp. laevis | Priority 3 (DPaW) | 100 | 3087-SK14-FI-79 | 451590.881 | 6305267.549 | 51 | 3/10/2014 |
| 2299 | Point | Goodenia laevis subsp. laevis | Priority 3 (DPaW) | 100 | 3087-SK14-FI-80 | 451838.316 | 6305446.399 | 51 | 3/10/2014 |
| 2300 | Point | Goodenia laevis subsp. laevis | Priority 3 (DPaW) | 100 | 3087-SK14-FI-81 | 452041.143 | 6305582.447 | 51 | 3/10/2014 |
| 2301 | Point | Goodenia laevis subsp. laevis | Priority 3 (DPaW) | 100 | 3087-SK14-FI-82 | 452266.753 | 6305739.226 | 51 | 3/10/2014 |
| 2302 | Point | Goodenia laevis subsp. laevis | Priority 3 (DPaW) | 100 | 3087-SK14-FI-83 | 452470.502 | 6305879.15 | 51 | 3/10/2014 |
| 2303 | Point | Goodenia laevis subsp. laevis | Priority 3 (DPaW) | 100 | 3087-SK14-FI-84 | 452962.604 | 6305921.688 | 51 | 3/10/2014 |
| 2304 | Point | Goodenia laevis subsp. laevis | Priority 3 (DPaW) | 100 | 3087-SK14-FI-85 | 453084.695 | 6305698.209 | 51 | 3/10/2014 |
| 2305 | Point | Goodenia laevis subsp. laevis | Priority 3 (DPaW) | 100 | 3087-SK14-FI-86 | 454113.193 | 6303932.413 | 51 | 3/10/2014 |
| 2306 | Point | Goodenia laevis subsp. laevis | Priority 3 (DPaW) | 100 | 3087-SK14-FI-87 | 454212.555 | 6303667.235 | 51 | 3/10/2014 |
| 2307 | Point | Goodenia laevis subsp. laevis | Priority 3 (DPaW) | 100 | 3087-SK14-FI-88 | 454447.911 | 6303351.476 | 51 | 3/10/2014 |

| | | | | | | | | | |
|------|-------|-------------------------------|-------------------|-----|------------------|------------|-------------|----|-----------|
| 2308 | Point | Goodenia laevis subsp. laevis | Priority 3 (DPaW) | 100 | 3087-SK14-FI-89 | 454549.372 | 6303131.097 | 51 | 3/10/2014 |
| 2309 | Point | Goodenia laevis subsp. laevis | Priority 3 (DPaW) | 100 | 3087-SK14-FI-90 | 454645.887 | 6302973.004 | 51 | 3/10/2014 |
| 2310 | Point | Goodenia laevis subsp. laevis | Priority 3 (DPaW) | 100 | 3087-SK14-FI-91 | 454738.894 | 6302788.949 | 51 | 3/10/2014 |
| 2311 | Point | Goodenia laevis subsp. laevis | Priority 3 (DPaW) | 100 | 3087-SK14-FI-92 | 454881.376 | 6302542.371 | 51 | 3/10/2014 |
| 2312 | Point | Goodenia laevis subsp. laevis | Priority 3 (DPaW) | 100 | 3087-SK14-FI-93 | 455029.33 | 6302297.036 | 51 | 3/10/2014 |
| 2313 | Point | Goodenia laevis subsp. laevis | Priority 3 (DPaW) | 100 | 3087-SK14-FI-94 | 455171.236 | 6302031.049 | 51 | 3/10/2014 |
| 2314 | Point | Goodenia laevis subsp. laevis | Priority 3 (DPaW) | 100 | 3087-SK14-FI-95 | 455403.445 | 6301717.248 | 51 | 3/10/2014 |
| 2315 | Point | Goodenia laevis subsp. laevis | Priority 3 (DPaW) | 100 | 3087-SK14-FI-96 | 455558.363 | 6301528.925 | 51 | 3/10/2014 |
| 2316 | Point | Goodenia laevis subsp. laevis | Priority 3 (DPaW) | 100 | 3087-SK14-FI-97 | 448274.408 | 6303226.089 | 51 | 3/10/2014 |
| 2317 | Point | Goodenia laevis subsp. laevis | Priority 3 (DPaW) | 100 | 3087-SK14-FI-98 | 448274.408 | 6303226.089 | 51 | 3/10/2014 |
| 2318 | Point | Goodenia laevis subsp. laevis | Priority 3 (DPaW) | 100 | 3087-SK14-FI-99 | 447935.594 | 6303721.647 | 51 | 3/10/2014 |
| 2384 | Point | Goodenia laevis subsp. laevis | Priority 3 (DPaW) | 300 | 3087-SK14-FI-169 | 352848.665 | 6346692.306 | 51 | 6/10/2014 |
| 2400 | Point | Goodenia laevis subsp. laevis | Priority 3 (DPaW) | 100 | 3087-SK14-FI-185 | 355159.551 | 6339027.087 | 51 | 6/10/2014 |
| 2404 | Point | Goodenia laevis subsp. laevis | Priority 3 (DPaW) | 100 | 3087-SK14-FI-189 | 355174.659 | 6338005.345 | 51 | 6/10/2014 |
| 2463 | Point | Goodenia laevis subsp. laevis | Priority 3 (DPaW) | 100 | 3087-SK14-FI-249 | 307647.504 | 6311001.095 | 51 | 7/10/2014 |

| | | | | | | | | | |
|------|-------|-------------------------------|-------------------|--------------|------------------|------------|-------------|----|------------|
| 2464 | Point | Goodenia laevis subsp. laevis | Priority 3 (DPaW) | 100 | 3087-SK14-FI-250 | 307501.694 | 6311388.818 | 51 | 7/10/2014 |
| 2465 | Point | Goodenia laevis subsp. laevis | Priority 3 (DPaW) | 100 | 3087-SK14-FI-251 | 307501.694 | 6311388.818 | 51 | 7/10/2014 |
| 2466 | Point | Goodenia laevis subsp. laevis | Priority 3 (DPaW) | 100 | 3087-SK14-FI-252 | 307079.804 | 6312151.241 | 51 | 7/10/2014 |
| 2467 | Point | Goodenia laevis subsp. laevis | Priority 3 (DPaW) | 100 | 3087-SK14-FI-253 | 306760.747 | 6312751.841 | 51 | 7/10/2014 |
| 2468 | Point | Goodenia laevis subsp. laevis | Priority 3 (DPaW) | 100 | 3087-SK14-FI-254 | 306516.837 | 6313193.179 | 51 | 7/10/2014 |
| 2469 | Point | Goodenia laevis subsp. laevis | Priority 3 (DPaW) | 100 | 3087-SK14-FI-255 | 306264.741 | 6313665.523 | 51 | 7/10/2014 |
| 2470 | Point | Goodenia laevis subsp. laevis | Priority 3 (DPaW) | 100 | 3087-SK14-FI-256 | 305089.271 | 6316343.492 | 51 | 7/10/2014 |
| 2549 | Point | Goodenia laevis subsp. laevis | Priority 3 (DPaW) | 1 | Q13 | 451297.341 | 6305288.806 | 51 | 21/10/2013 |
| 2550 | Point | Goodenia laevis subsp. laevis | Priority 3 (DPaW) | 1 | Q16 | 448410.352 | 6305634.41 | 51 | 21/10/2013 |
| 2551 | Point | Goodenia laevis subsp. laevis | Priority 3 (DPaW) | 1 | Q18 | 447787.319 | 6303885.272 | 51 | 3/10/2014 |
| 2552 | Point | Goodenia laevis subsp. laevis | Priority 3 (DPaW) | 1 | Q21 | 468356.699 | 6309039.542 | 51 | 23/10/2013 |
| | | | | | | | | | |
| | | | TOTAL | 12026 | | | | | |