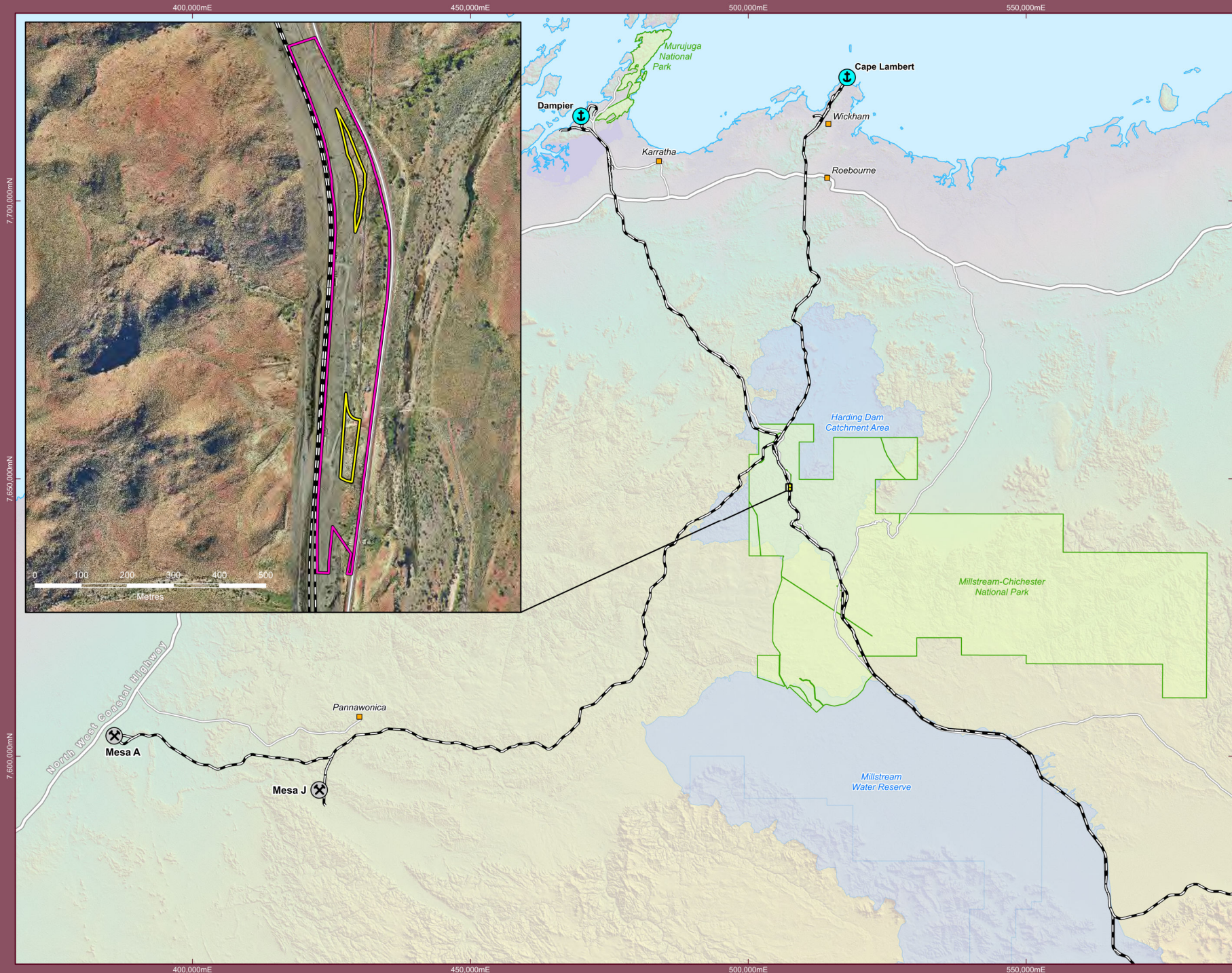


**Attachment 6: NVCP Application Maps**



### Legend

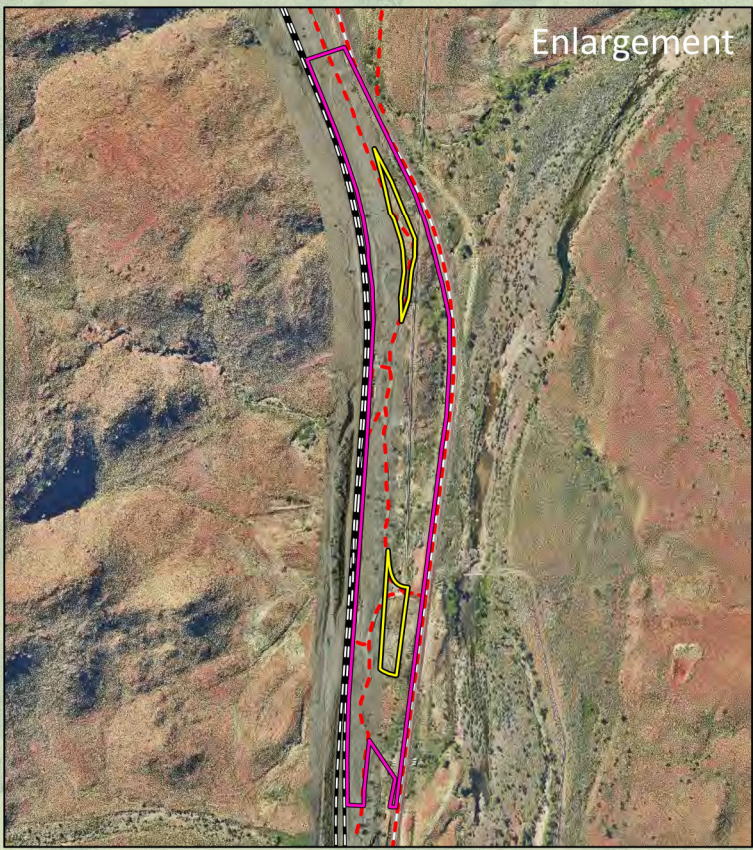
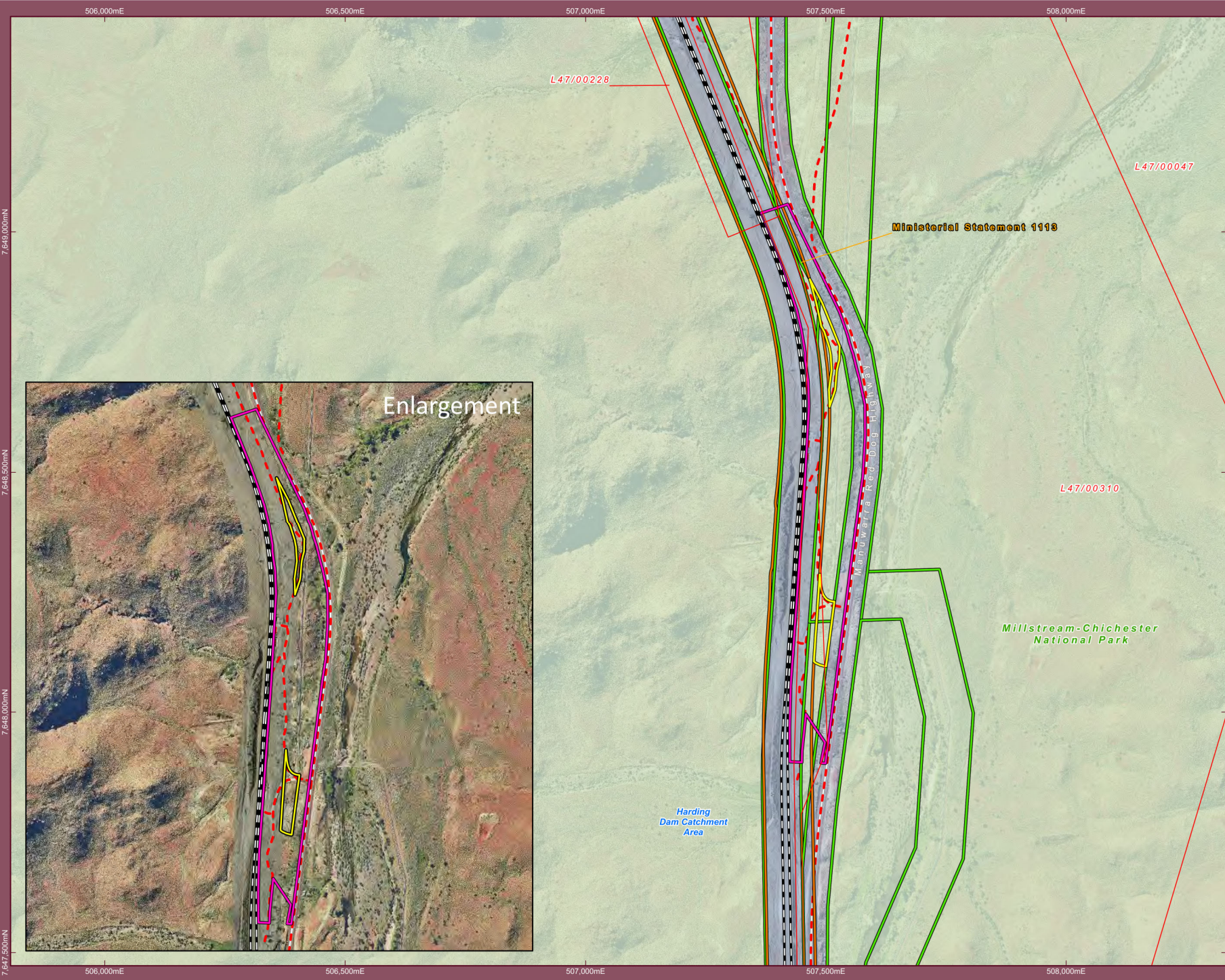
- Port
- Rio Tinto Mine
- Town
- Proposed NVCP Application Area
- NVCP Survey Boundary
- National Park
- Public Drinking Water Source
- Rio Tinto Railway
- Highway
- Major Road

Drawn: J Wesson  
 Plan: RTIO-0989639v1  
 Date: April 2023

Checked by: A Coulson  
 Proj: GCS\_GDA\_1994  
 GIS.Team@riotinto.com



Disclaimer: This document has been prepared to the highest level of accuracy possible, for the purposes of Rio Tinto's iron ore business. Reproduction of this document in whole or in part by any means is strictly prohibited without the express approval of Rio Tinto. Further, this document may not be referred to, quoted or relied upon for any purpose whatsoever without the written approval of Rio Tinto. Rio Tinto will not be liable to a third party for any loss, damage, liability or claim arising out of or incidental to a third party using or relying on the content contained in this document. Rio Tinto disclaims all risk and the third party assumes all risk and releases and indemnifies and agrees to keep indemnified Rio Tinto from any loss, damage, claim or liability arising directly or indirectly from the use or reliance on this document.



### Legend

- Proposed NVCP Application Area
- NVCP Survey Boundary
- Ministerial Statement 1113
- MRWA Road Reserve
- Rio Tinto Live Mining Act Tenure
- Millstream-Chichester National Park
- Harding Dam Catchment Area
- Rio Tinto Railway
- Major Road
- Track

Drawn: J Wesson  
 Plan: RTIO-0989639v1  
 Date: April 2023

Checked by: A Coulson  
 Proj: GDA 1994 MGA Zone 50  
 GIS.Team@riotinto.com



**Disclaimer:** This document has been prepared to the highest level of accuracy possible, for the purposes of Rio Tinto's iron ore business. Reproduction of this document in whole or in part by any means is strictly prohibited without the express approval of Rio Tinto. Further, this document may not be referred to, quoted or relied upon for any purpose whatsoever without the written approval of Rio Tinto. Rio Tinto will not be liable to a third party for any loss, damage, liability or claim arising out of or incidental to a third party using or relying on the content contained in this document. Rio Tinto disclaims all risk and the third party assumes all risk and releases and indemnifies and agrees to keep indemnified Rio Tinto from any loss, damage, claim or liability arising directly or indirectly from the use or reliance on this document.

