

CPS 10197/1 - Map C

119°9'0"E

119°9'18"E

119°9'36"E

31°20'24"S

31°20'24"S

31°20'42"S

31°20'42"S

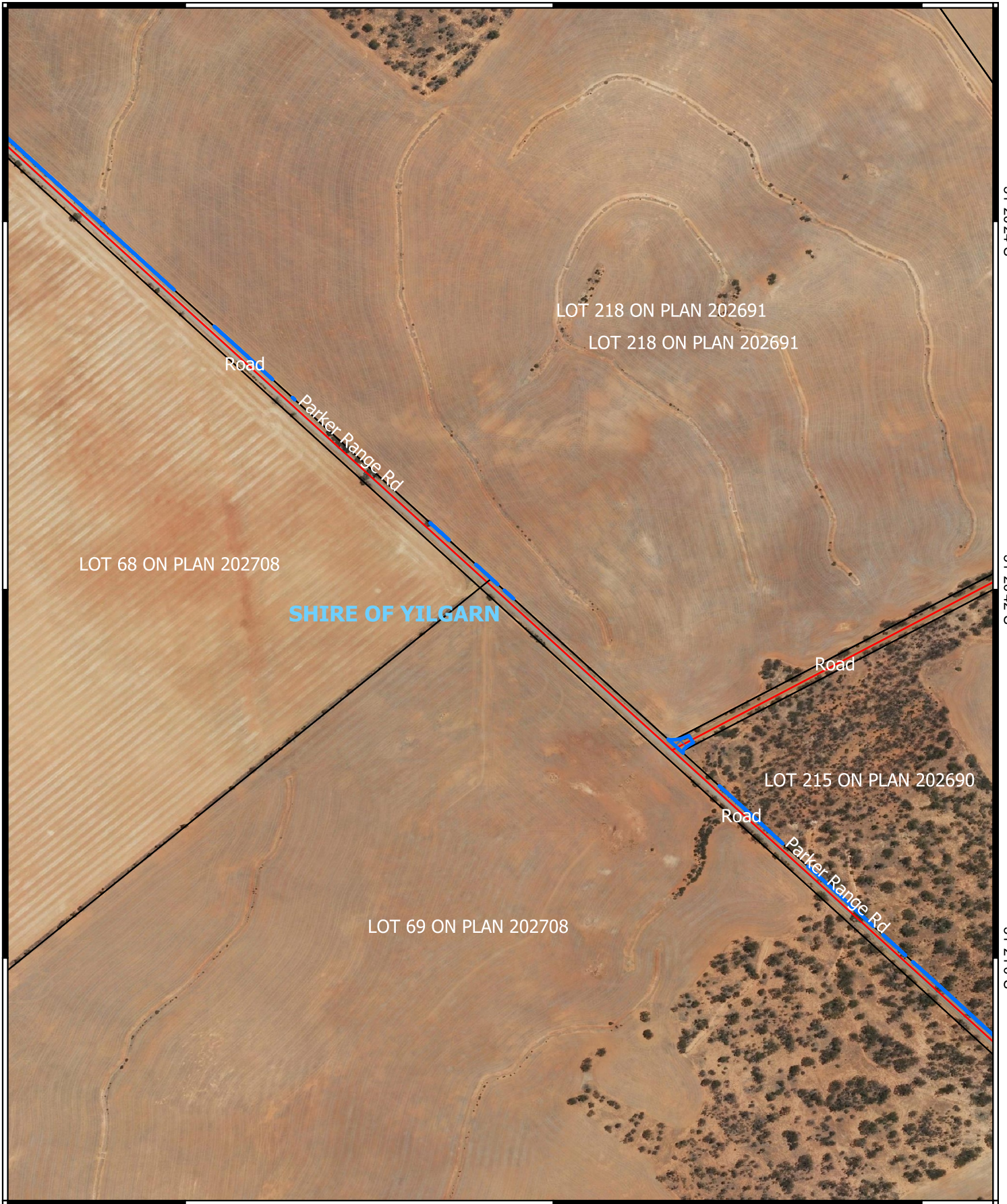
31°21'0"S

31°21'0"S


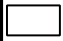

119°9'0"E

119°9'18"E



119°9'36"E



Legend

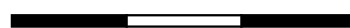
-  CPS areas applied to clear
-  Land Tenure (LGATE_226) - SLIP
-  Local Government Authorities

Road Centrelines

-  Local Rd - Sealed
-  Local Rd - Other



0 100 200 300 m



1:5,000

Projection: GDA2020



GOVERNMENT OF
WESTERN AUSTRALIA