

CPS 10197/1 - Map N

119°17'24"E

119°17'42"E

119°18'0"E

31°27'36"S

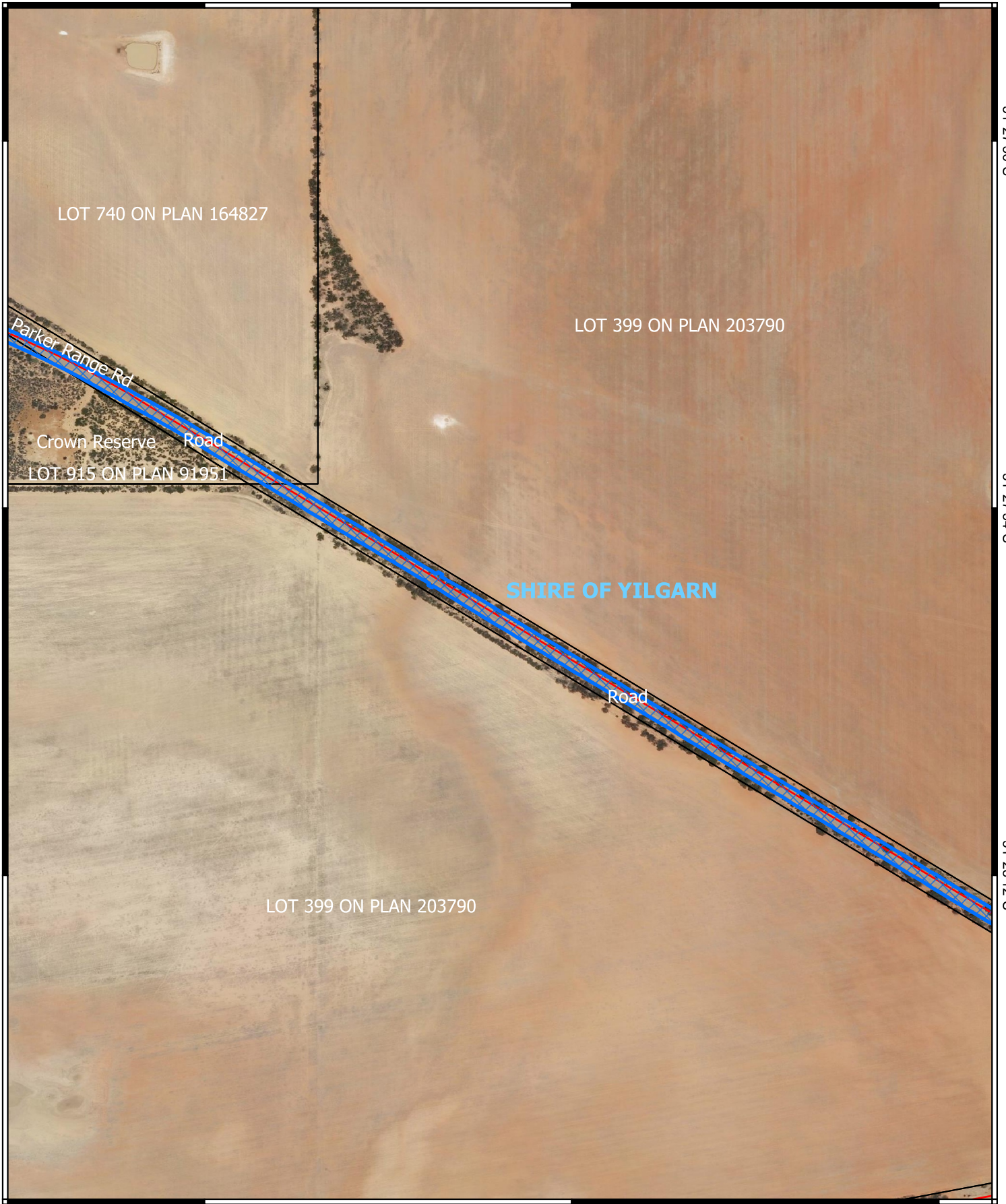
31°27'36"S

31°27'54"S

31°27'54"S

31°28'12"S

31°28'12"S


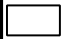



119°17'24"E



119°17'42"E

119°18'0"E

Legend

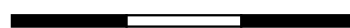
-  CPS areas applied to clear
-  Land Tenure (LGATE_226) - SLIP
-  Local Government Authorities

Road Centrelines

-  Local Rd - Sealed
-  Local Rd - Other



0 100 200 300 m



1:5,000

Projection: GDA2020



GOVERNMENT OF
WESTERN AUSTRALIA