

CPS 10197/1 - Map V

119°23'24"E

119°23'42"E

119°24'0"E

31°31'12"S

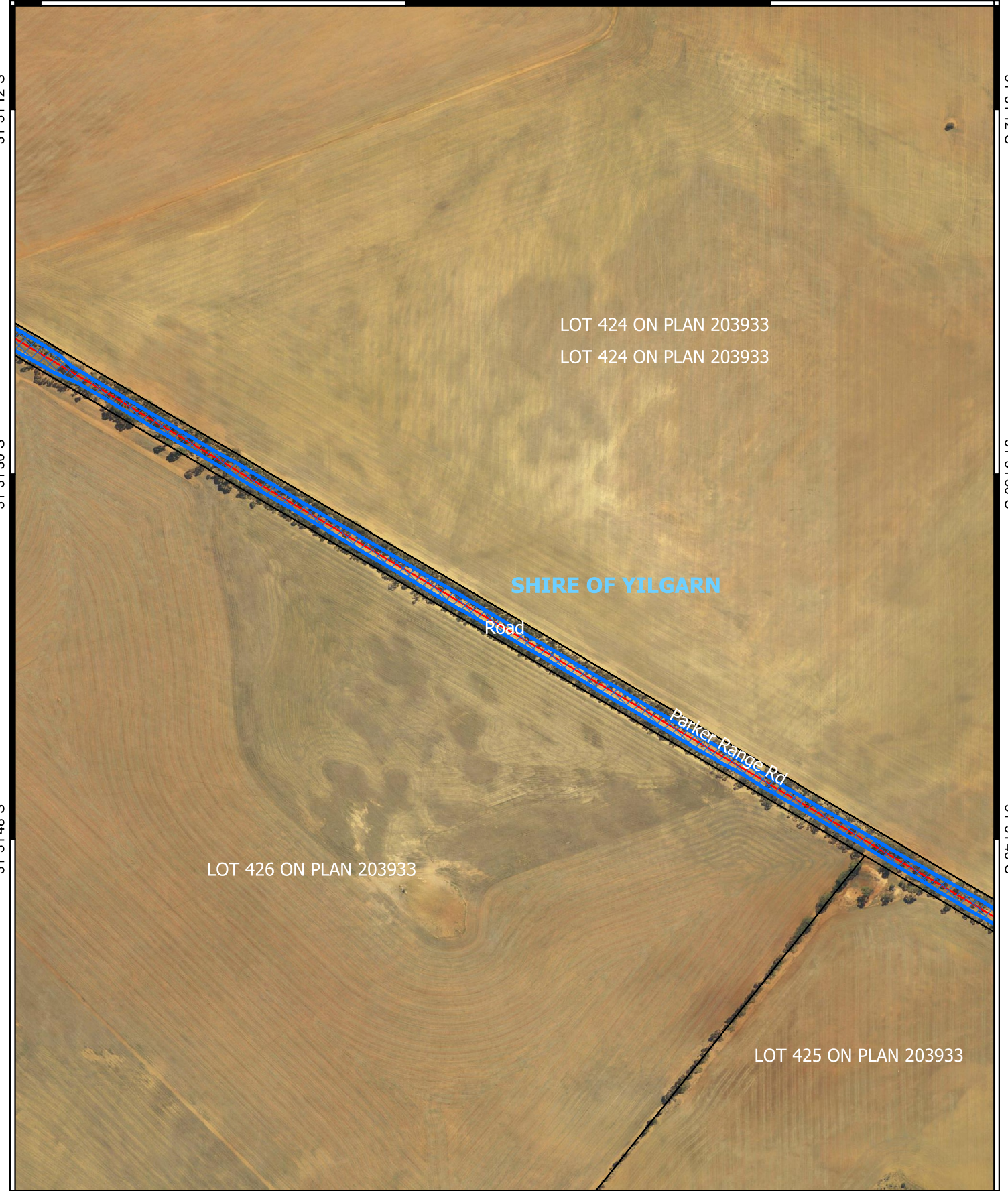
31°31'12"S

31°31'30"S

31°31'30"S

31°31'48"S

31°31'48"S


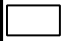



119°23'24"E

119°23'42"E

119°24'0"E

Legend

-  CPS areas applied to clear
-  Land Tenure (LGATE_226) - SLIP
-  Local Government Authorities

Road Centrelines

-  Local Rd - Other



0 100 200 300 m



1:5,000

Projection: GDA2020



GOVERNMENT OF
WESTERN AUSTRALIA