

CPS 10197/1 - Map W

119°25'12"E

119°25'30"E

31°32'6"S

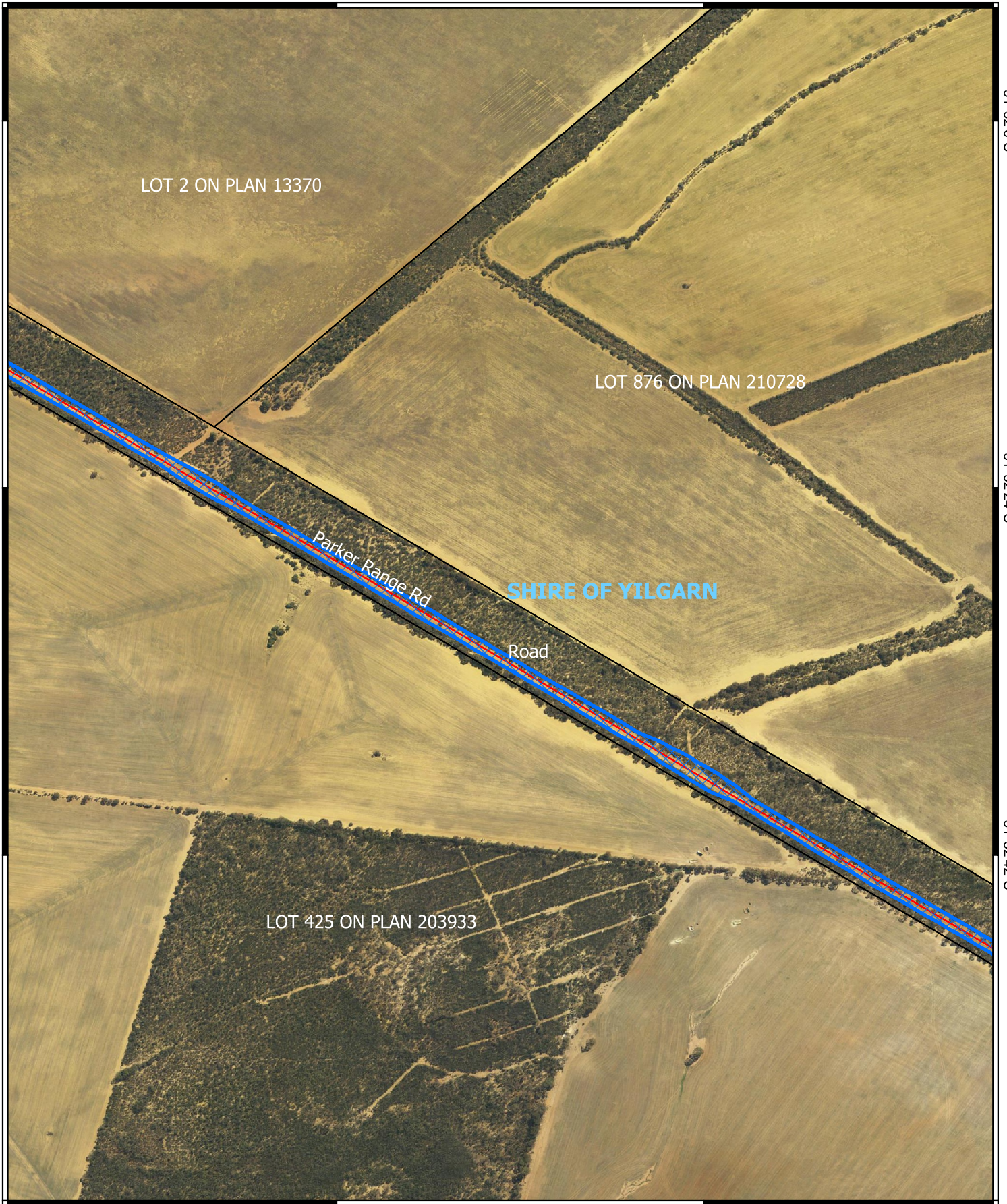
31°32'6"S

31°32'24"S

31°32'24"S

31°32'42"S


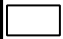

31°32'42"S



119°25'12"E

119°25'30"E

Legend

-  CPS areas applied to clear
-  Land Tenure (LGATE_226) - SLIP
-  Local Government Authorities

Road Centrelines

-  Local Rd - Other



1:5,000

Projection: GDA2020



GOVERNMENT OF
WESTERN AUSTRALIA