

Attachment 5: Photos of Application Area



Plate 1: Coastal Share path at Ch 700 – 1385: Whitfords Nodes carpark to Hillarys animal beach carpark (FPR2299) – currently 2m wide concrete path in poor condition.



Plate 2: Coastal Share path at Ch 700 – 1385: Whitfords Nodes carpark to Hillarys animal beach carpark (FPR2299) – currently 2m wide asphalt path in poor condition.



Plate 3: Coastal Share path at Ch 700 – 1385: Whitfords Nodes carpark to Hillarys animal beach carpark (FPR2299) – currently 2m wide concrete path in poor condition.



Plate 4: Coastal Share path at Ch 1800 – 2700: Hillarys animal beach carpark to Whitfords Avenue / Northshore Drive (FPR2300)– currently 2.5m wide concrete path.



Plate 5: Coastal Share path at Ch 1800 – 2700: Hillarys animal beach carpark to Whitfords Avenue / Northshore Drive (FPR2300)– currently 3m wide asphalt path.



Plate 6: Coastal Share path at Ch 2700 – 4275: Whitfords Avenue / Northshore Drive to Tom Simpson park (FPR2301) – currently 3m wide asphalt path.



Plate 7: Coastal Share path at Ch 2700 – 4275: Whitfords Avenue / Northshore Drive to Tom Simpson park (FPR2301) – currently 3m wide asphalt path.



Plate 8: Coastal Share path at Ch 2700 – 4275: Whitfords Avenue / Northshore Drive to Tom Simpson park (FPR2301) – currently 3m wide asphalt path.



Plate 9: Coastal Share path at Ch 2700 – 4275: Whitfords Avenue / Northshore Drive to Tom Simpson park (FPR2301) – currently 3m wide concrete path.



Plate 10: Coastal Share path at Ch 2700 – 4275: Whitfords Avenue / Northshore Drive to Tom Simpson park (FPR2301) – currently 3m wide asphalt path.



Plate 11: Coastal Share path at Ch 2700 – 4275: Whitfords Avenue / Northshore Drive to Tom Simpson park (FPR2301) – currently 3m wide asphalt path.



Plate 12: Coastal Share path at Ch 4275 – 5590: Tom Simpson park to Westview carpark – currently 3m wide asphalt path of good condition.



Plate 13: Coastal Share path at Ch 4275 – 5590: Tom Simpson park to Westview carpark – currently 3m wide asphalt path of good condition.



Plate 14: Coastal Share path at Ch 4275 – 5590: Tom Simpson park to Westview carpark – currently 3m wide asphalt path of good condition.



Plate 15: Coastal Share path at Ch 5590 – 6570: Westview carpark to Swanson Way path (FPR2297) – currently 3m wide asphalt path of poor condition.



Plate 16: Coastal Share path at Ch 6570 – 7200: Swanson Way path to Ocean Reef Marina (FPR2297) – currently 3m wide asphalt path of poor condition.



Plate 17: Coastal Share path at Ch 6570 – 7200: Swanson Way path to Ocean Reef Marina (FPR2297) – currently 3m wide asphalt path of poor condition.

Attachment 6: Photos featuring examples of upgraded (approx. 4m wide) sections of coastal shared path



Plate 1: Coastal Share path at Ch 1385 – 1800: Hillarys animal beach carpark – currently 4m wide asphalt path in good condition.



Plate 2: Coastal Share path at Ch 1385 – 1800: Hillarys animal beach carpark – currently 4m wide asphalt path in good condition.



Plate 3: Example of Coastal Share path at 4m wide asphalt path in good condition.

Attachment 7: Photos featuring examples of path drainage options that may be constructed for this project



Plate 1: Stone Pitching Drainage

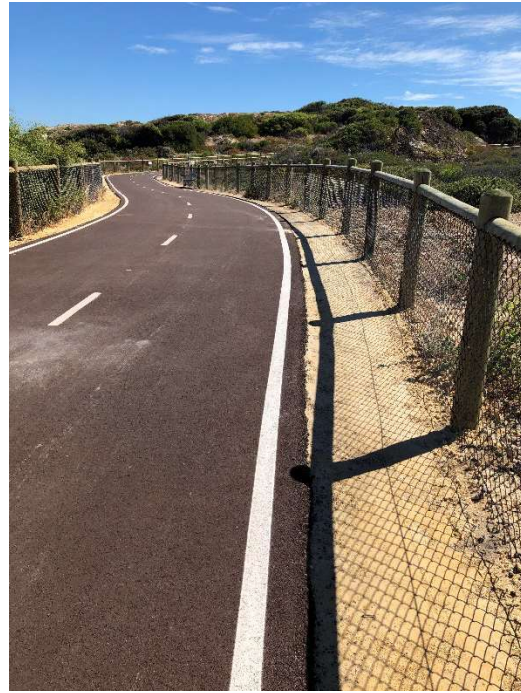


Plate 2: Limestone Drainage



Plate 3: Kerbed to Stone Pitching Drainage

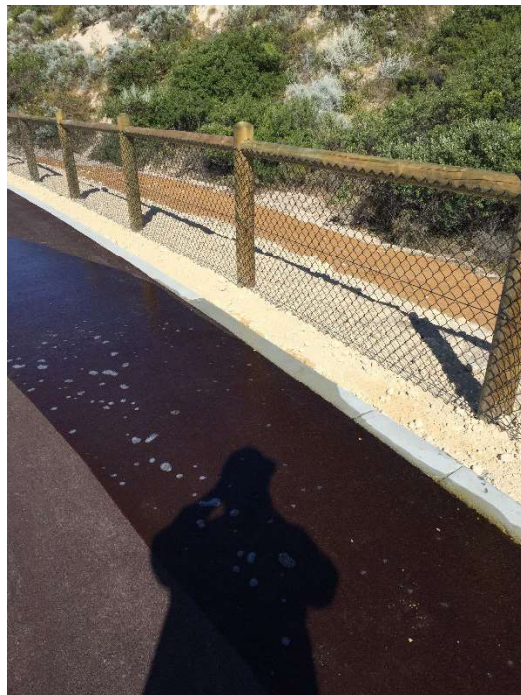


Plate 4: Flushed Kerbed to Limestone Drainage