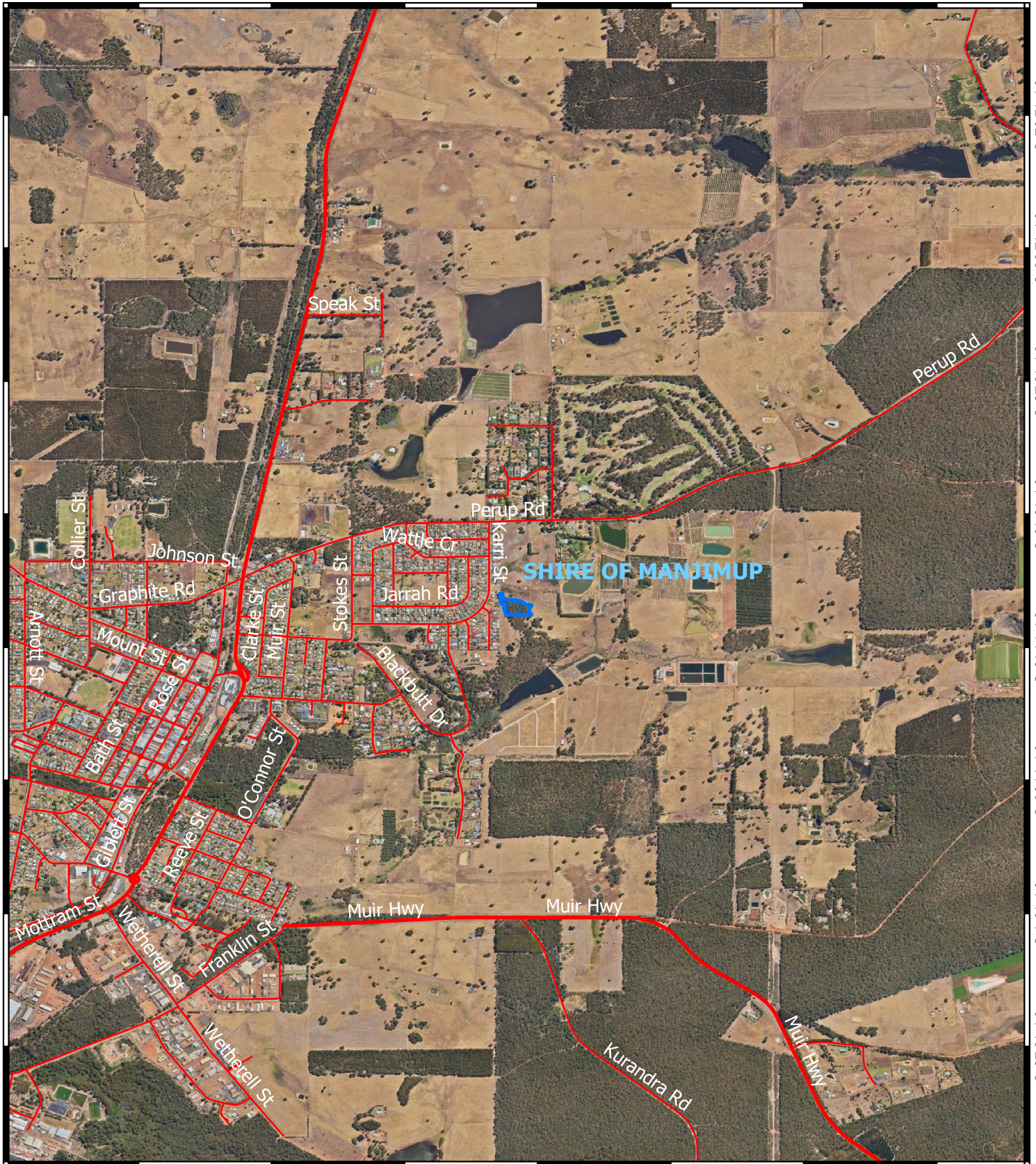


# CPS 10220/1 - Context Map

116°8'38"E 116°9'4"E 116°9'29"E 116°9'54"E 116°10'19"E 116°10'44"E 116°11'10"E



34°12'32"S  
34°12'58"S  
34°13'23"S  
34°13'48"S  
34°14'13"S  
34°14'38"S  
34°15'4"S  
34°15'29"S

34°12'32"S  
34°12'58"S  
34°13'23"S  
34°13'48"S  
34°14'13"S  
34°14'38"S  
34°15'4"S  
34°15'29"S





116°8'38"E 116°9'4"E 116°9'29"E 116°9'54"E 116°10'19"E 116°10'44"E 116°11'10"E

## Legend

-  CPS areas applied to clear
-  Local Government Authorities

## Road Centrelines

-  Highway
-  Local Rd - Sealed

0 1 2 km



1:19,000

Projection: GDA2020

