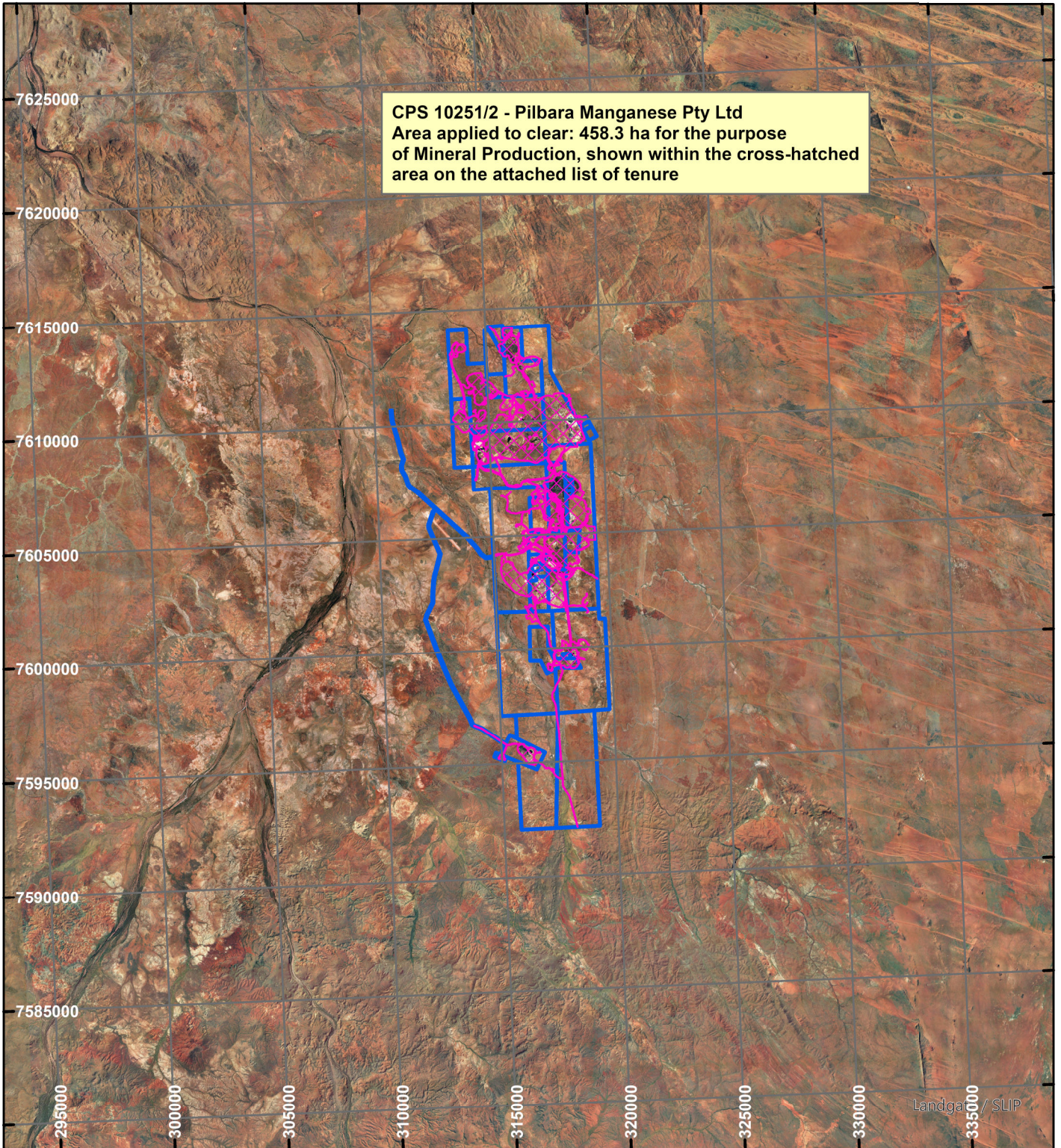


# CPS 10251/2 - Pilbara Manganese Pty Ltd



CPS 10251/2 - Pilbara Manganese Pty Ltd  
Area applied to clear: 458.3 ha for the purpose  
of Mineral Production, shown within the cross-hatched  
area on the attached list of tenure

## LEGEND



Clearing Instruments



Mining Tenements



Scale 1:250,000

(Approximate when reproduced at A4)

Geocentric Datum Australia 1994

Note: the data in this map have not been projected. This may result in geometric distortion or measurement inaccuracies.

..... Date .....

Officer with delegated authority under Section 20 of  
the Environmental Protection Act 1986

Information derived from this map should be  
confirmed with the data custodian acknowledged  
by the agency acronym in the legend.