

CPS 10285/1 - Map A

118°31'12"E

118°32'24"E

20°20'24"S

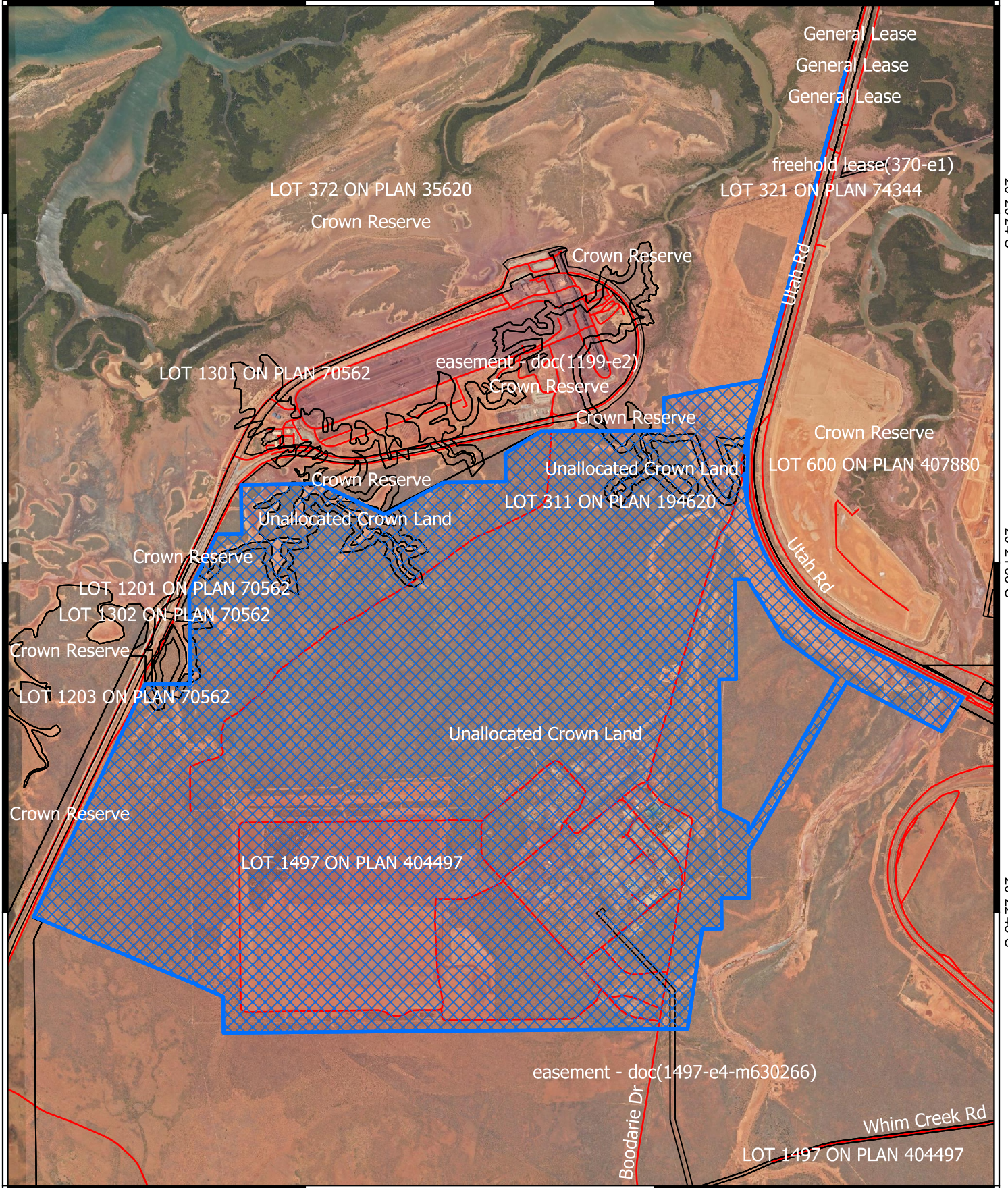
20°20'24"S

20°21'36"S

20°21'36"S

20°22'48"S



20°22'48"S





118°31'12"E

118°32'24"E

Legend

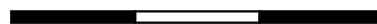
-  CPS areas applied to clear
-  Land Tenure (LGATE_226) - SLIP

Road Centrelines

-  Local Rd - Sealed
-  Local Rd - Other



0 500 1,000 1,500 m



Projection: GDA 2020

1:25,000



GOVERNMENT OF
WESTERN AUSTRALIA