

# CPS 10294/1 - Map

116°47'24"E

116°47'42"E

116°48'0"E

20°42'18"S

20°42'36"S

20°42'54"S

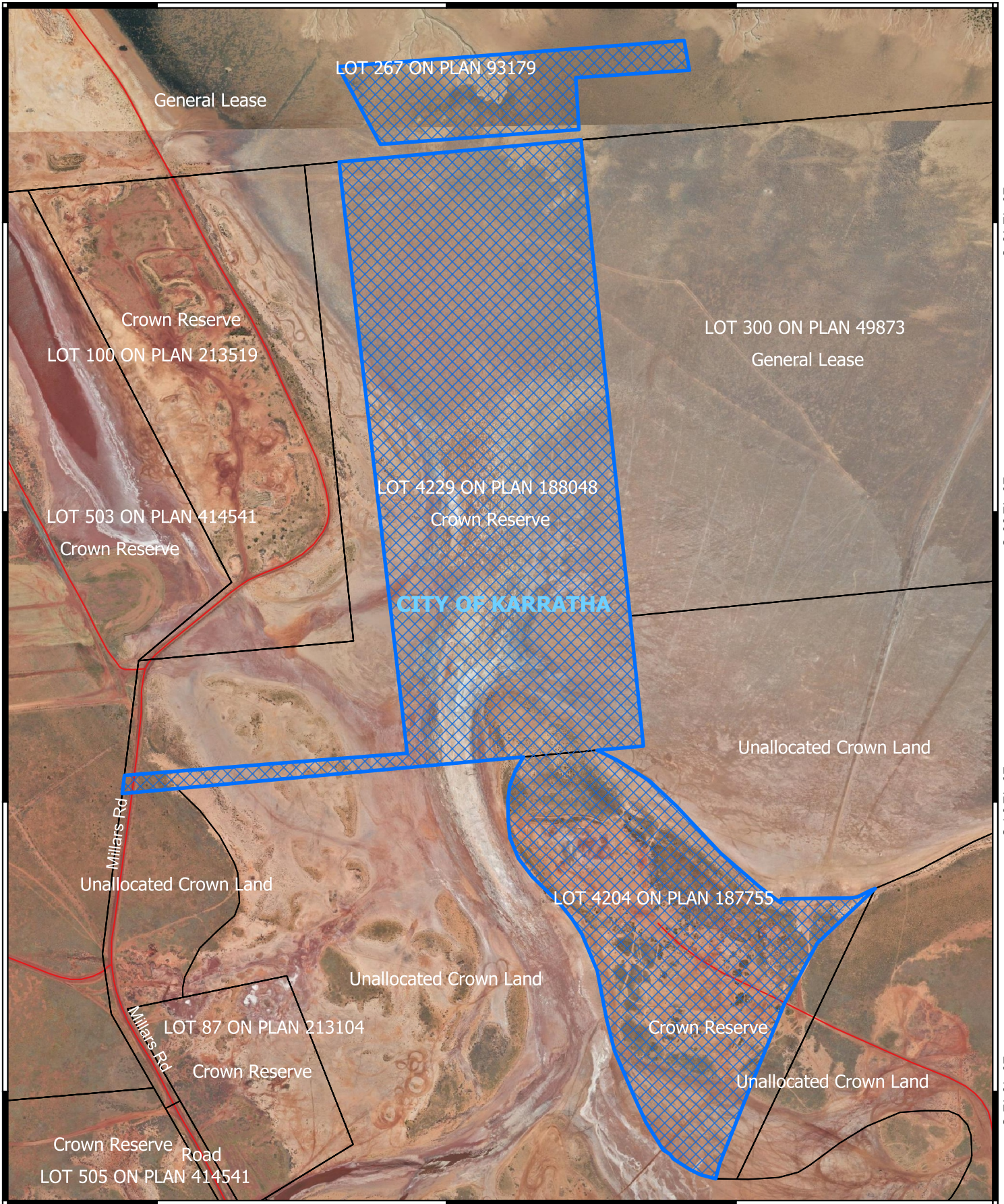
20°43'12"S

20°42'18"S

20°42'36"S

20°42'54"S

20°43'12"S


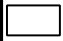



116°47'24"E

116°47'42"E

116°48'0"E

## Legend

-  CPS areas applied to clear
-  Land Tenure (LGATE\_226) - SLIP
-  Local Government Authorities

## Roads

-  Minor



0 100 200 300 400 500 m



1:7,500

Projection: GDA2020



GOVERNMENT OF  
WESTERN AUSTRALIA