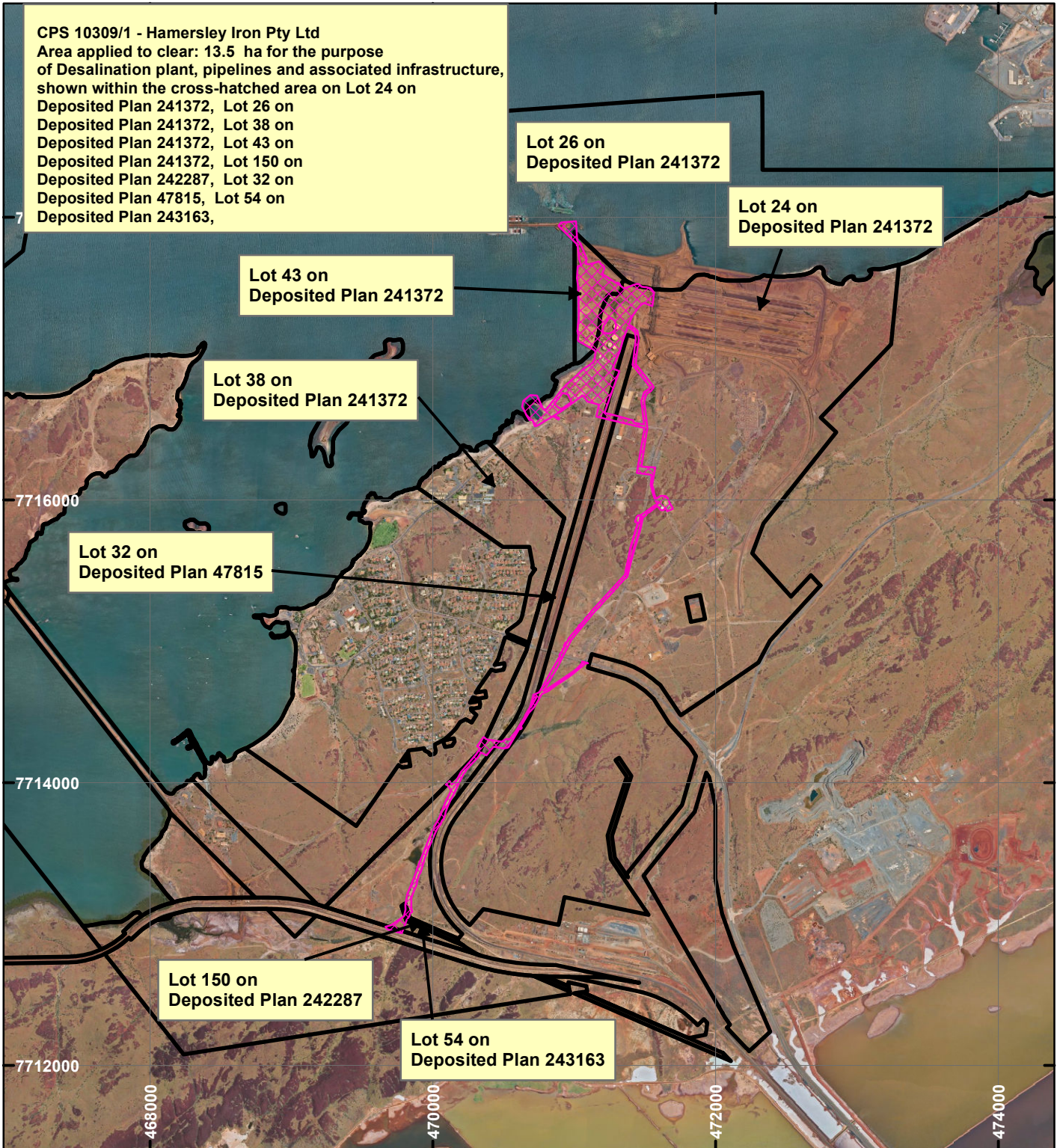


CPS 10309/1 - Hamersley Iron Pty Ltd



CPS 10309/1 - Hamersley Iron Pty Ltd
 Area applied to clear: 13.5 ha for the purpose
 of Desalination plant, pipelines and associated infrastructure,
 shown within the cross-hatched area on Lot 24 on
 Deposited Plan 241372, Lot 26 on
 Deposited Plan 241372, Lot 38 on
 Deposited Plan 241372, Lot 43 on
 Deposited Plan 241372, Lot 150 on
 Deposited Plan 242287, Lot 32 on
 Deposited Plan 47815, Lot 54 on
 Deposited Plan 243163,

Lot 26 on
 Deposited Plan 241372

Lot 24 on
 Deposited Plan 241372

Lot 43 on
 Deposited Plan 241372

Lot 38 on
 Deposited Plan 241372

Lot 32 on
 Deposited Plan 47815

Lot 150 on
 Deposited Plan 242287

Lot 54 on
 Deposited Plan 243163

LEGEND



Clearing Instruments



Mining Tenements

Orthophotography sourced from Landgate



Scale 1:40,000

(Approximate when reproduced at A4)

Geocentric Datum Australia 1994

Note: the data in this map have not been projected. This may result in geometric distortion or measurement inaccuracies.

..... Date

Officer with delegated authority under Section 20 of
 the Environmental Protection Act 1986

Information derived from this map should be
 confirmed with the data custodian acknowledged
 by the agency acronym in the legend.



WA Crown Copyright 2002