

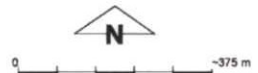
# Plan 1031/1a



## LEGEND

- Clearing Instruments**
- Areas Subject to Conditions
  - Areas Approved to Clear
  - Road Centrelines - DLI 1/5/04
  - Cadastre - DLI 1/12/05

Swan Coastal Plain South  
40cm Orthomosaic - DLI  
05



Scale 1:14000

(Approximate when reproduced at A4)

Geocentric Datum Australia 1994

*Note: the data in this map have not been projected. This may result in geometric distortion or measurement inaccuracies.*

*D. J. Morgan* Date 11.5.06

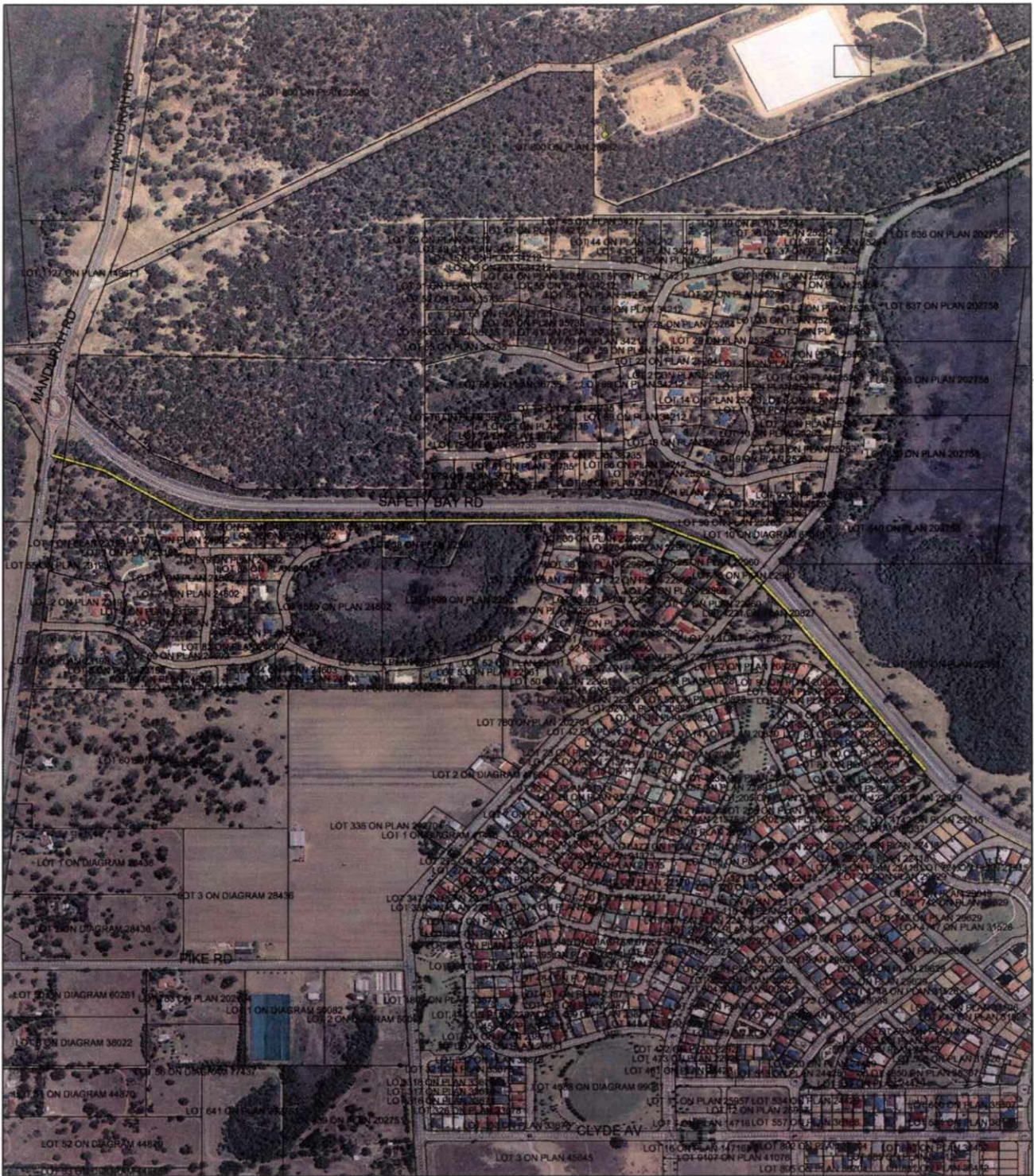
Officer with delegated authority under Section 20 of the Environmental Protection Act 1986

Information derived from this map should be confirmed with the data custodian acknowledged by the agency acronym in the legend.





# Plan 1031/1b



## LEGEND

- Clearing Instruments**
- Areas Subject to Conditions
  - Areas Approved to Clear
  - Road Centrelines - DLI 1/5/04

Swan Coastal Plain South  
40cm Orthomosaic - DLI  
05

Cadastre for labelling - DLI  
1/12/05



0 ————— 300 m

Scale 1:11000

(Approximate when reproduced at A4)

Geocentric Datum Australia 1994

*Note: the data in this map have not been projected. This may result in geometric distortion or measurement inaccuracies.*

*Decl E.J. Moag* Date 11.5.06

Officer with delegated authority under Section 20 of the Environmental Protection Act 1986

Information derived from this map should be confirmed with the data custodian acknowledged by the agency acronym in the legend.

