

# E80/4511-1 Application To Clear Native Vegetation – Figures & Photographs

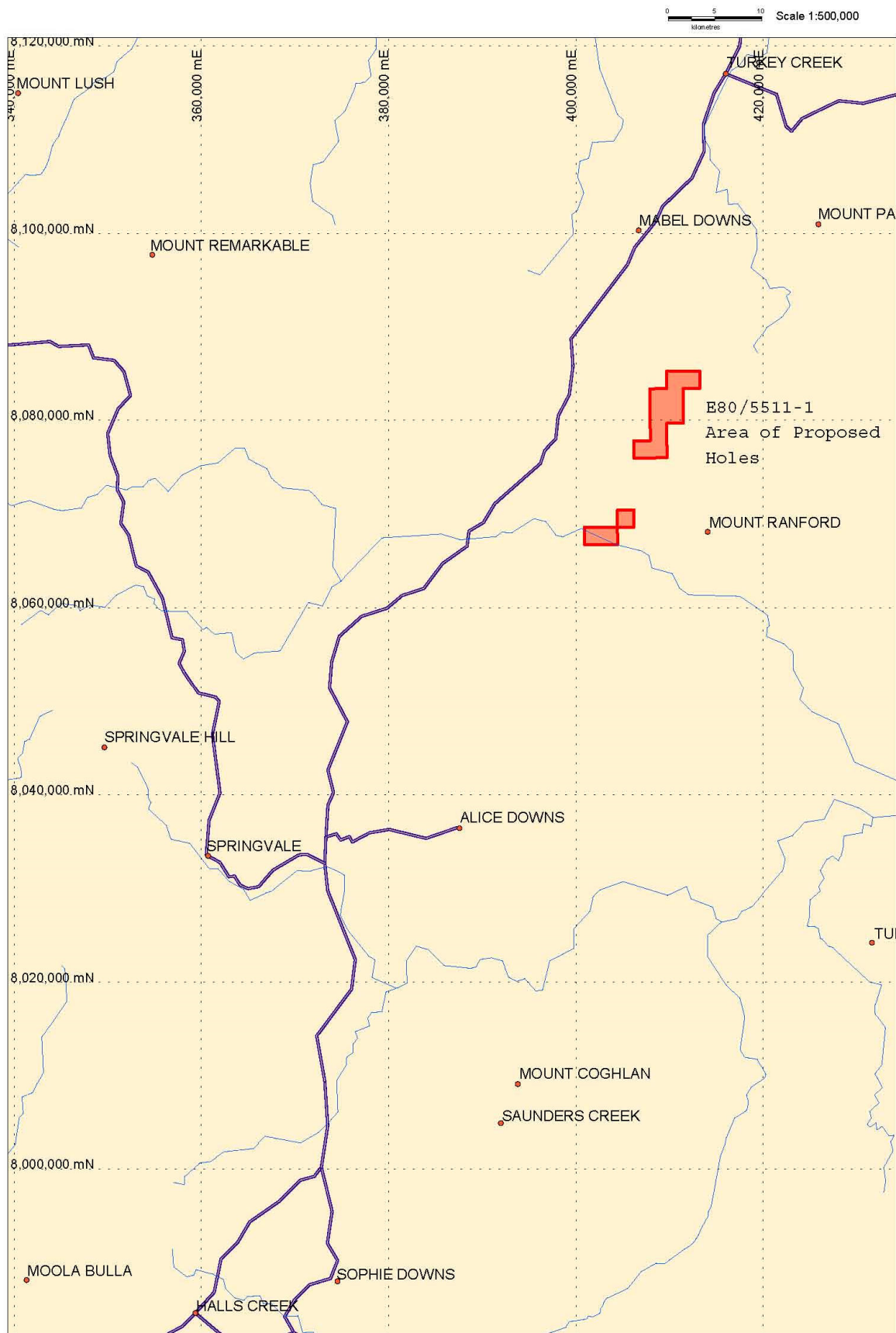


Figure 1, E80/4511 Location Plan, Proposed Holes at Northern End of Tenement

# E80/4511-1 Application To Clear Native Vegetation – Figures & Photographs

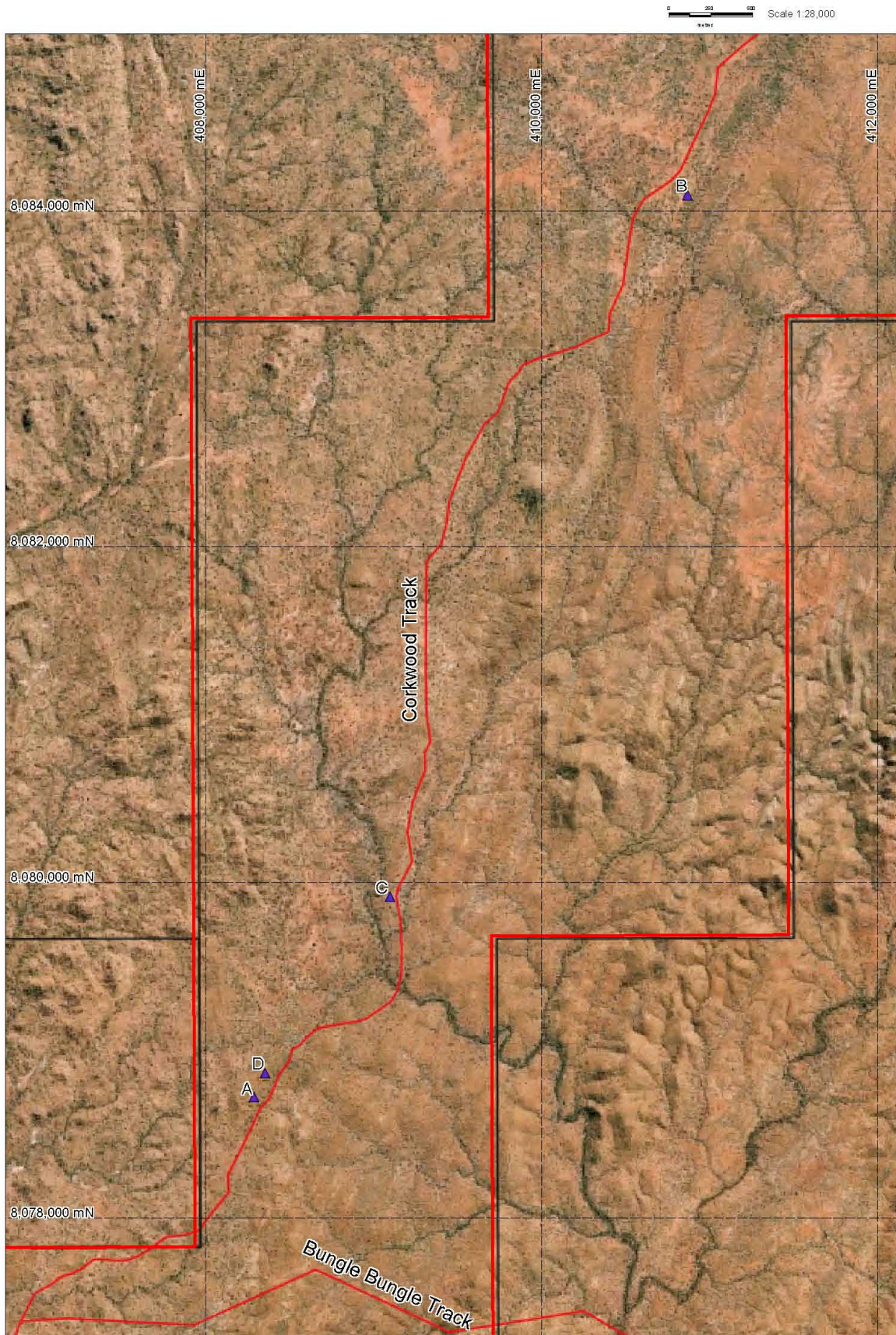


Figure 2, Aerial Photograph with proposed Drill Collars (A, B, C & D)



E80/4511-1 Application To Clear Native Vegetation – Figures & Photographs



Photograph 1, Site of Proposed Hole A in Middle Distance. Vehicle at top left is on Springvale Pastoral Track



## E80/4511-1 Application To Clear Native Vegetation – Figures & Photographs



Photograph 2, Site of Proposed Hole B (Avoiding Tree) in Middle Distance. Vehicle at top centre is on Springvale Pastoral Track