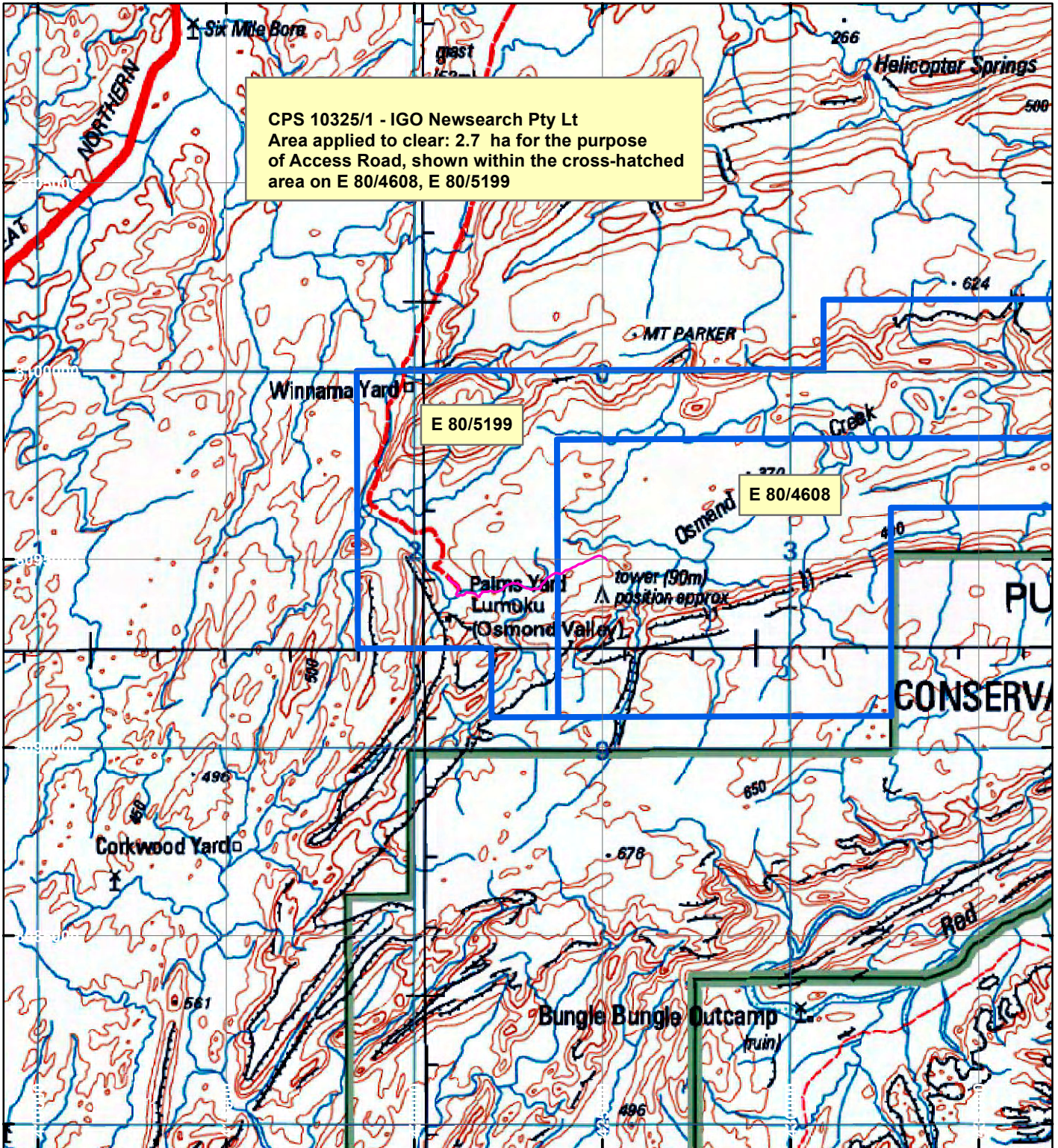


CPS 10325/1 - IGO Newsearch Pty Ltd



CPS 10325/1 - IGO Newsearch Pty Lt
 Area applied to clear: 2.7 ha for the purpose
 of Access Road, shown within the cross-hatched
 area on E 80/4608, E 80/5199

LEGEND

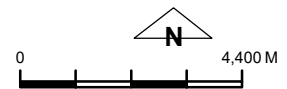


Clearing Instruments



Mining Tenements

Orthophotography sourced from Landgate



Geocentric Datum Australia 1994

Note: the data in this map have not been projected. This may result in geometric distortion or measurement inaccuracies.

..... Date

Officer with delegated authority under Section 20 of the Environmental Protection Act 1986

Information derived from this map should be confirmed with the data custodian acknowledged by the agency acronym in the legend.

