

CPS 10340/1 - Map

115°58'41"E

115°58'48"E

115°58'55"E

31°48'14"S

31°48'22"S

31°48'29"S

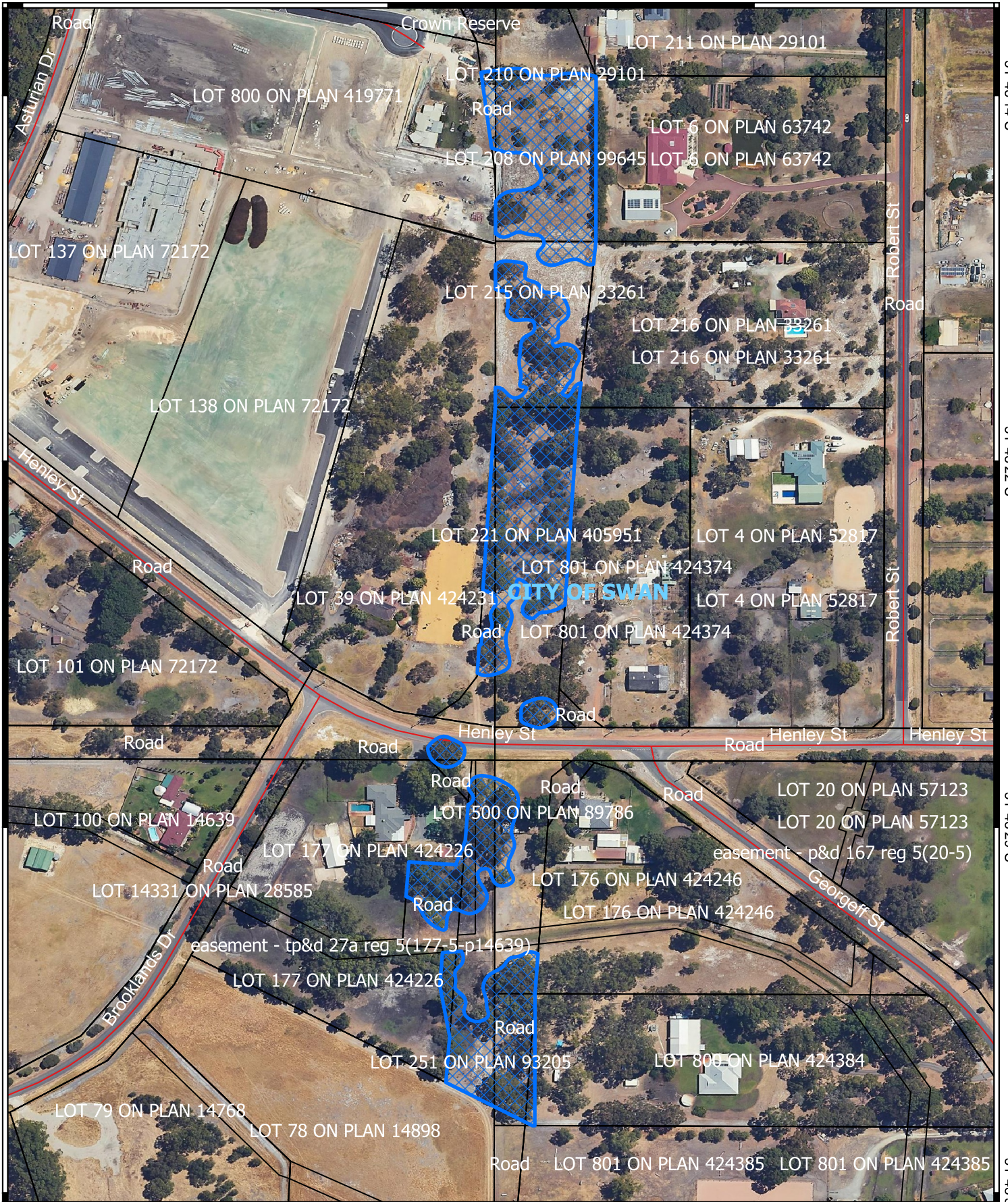
31°48'36"S

31°48'14"S

31°48'22"S

31°48'29"S

31°48'36"S

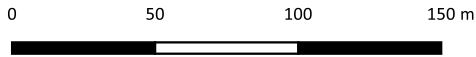


Legend

- CPS areas applied to clear
- Land Tenure (LGATE_226) - SLIP
- Local Government Authorities

Roads

- Minor



1:2,000

Projection: GDA2020



GOVERNMENT OF WESTERN AUSTRALIA