

CPS 10343/1 - Map

116°15'18"E

116°15'36"E

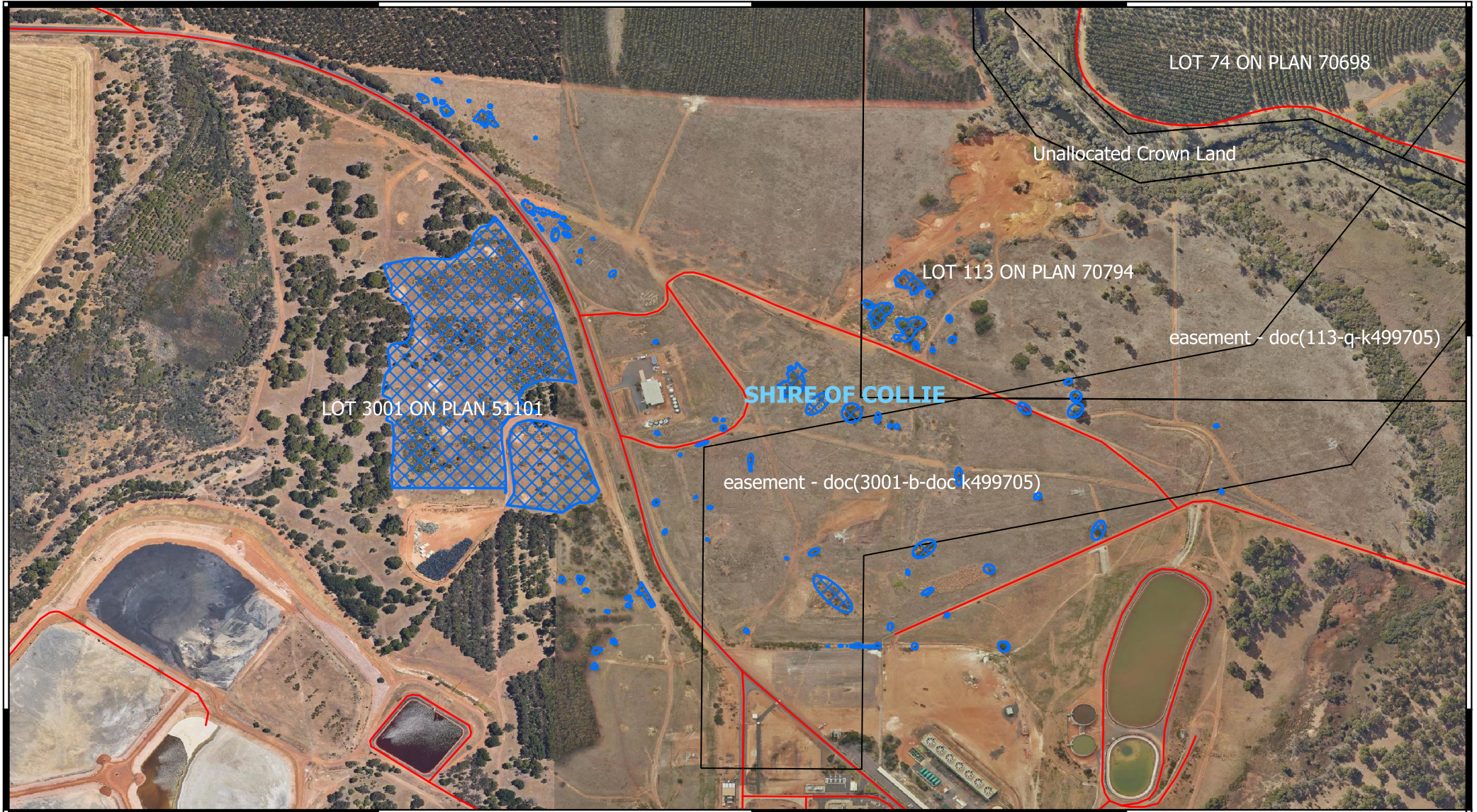
116°15'54"E

33°20'6"S

33°20'24"S

33°20'6"S

33°20'24"S



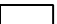


116°15'18"E

116°15'36"E

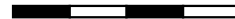
116°15'54"E

Legend

-  Local Government Authorities
-  CPS area applied to clear
-  Land Tenure



0 50 100 150 200 m



1:5,000

Projection: GDA 2020



GOVERNMENT OF
WESTERN AUSTRALIA