

CPS 10358/1 - Map

115°37'26"E

115°37'41"E

115°37'55"E

33°35'46"S

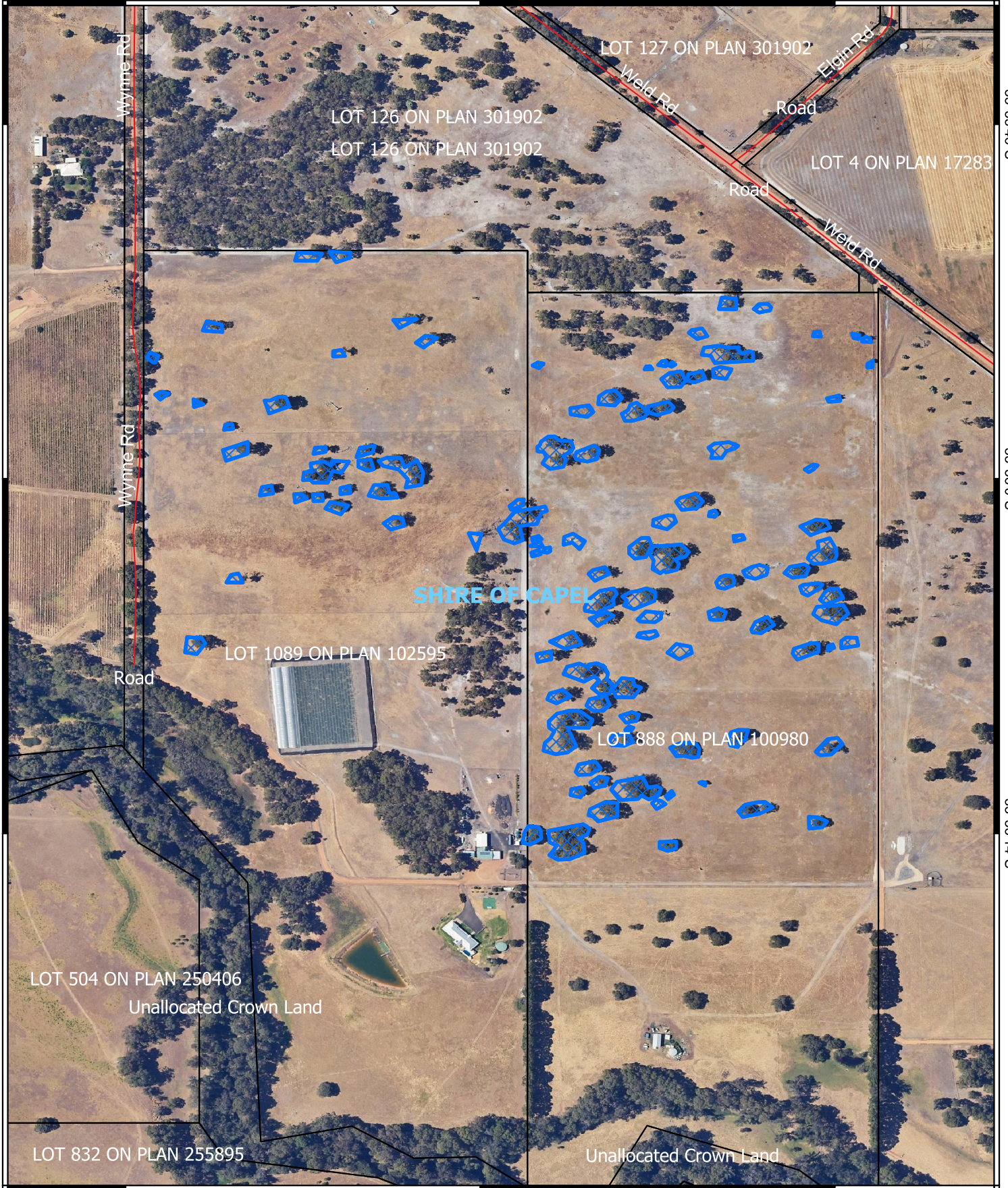
33°36'0"S

33°36'14"S

33°35'46"S

33°36'0"S

33°36'14"S


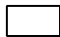



115°37'26"E

115°37'41"E

115°37'55"E

Legend

-  CPS areas applied to clear
-  Land Tenure (LGATE_226) - SLIP
-  Local Government Authorities

- ### Roads
-  Minor



Projection: GDA 2020

1:4,000



GOVERNMENT OF
WESTERN AUSTRALIA