

CPS 10372/1 - Map

116°44'24"E

116°45'36"E

20°37'12"S

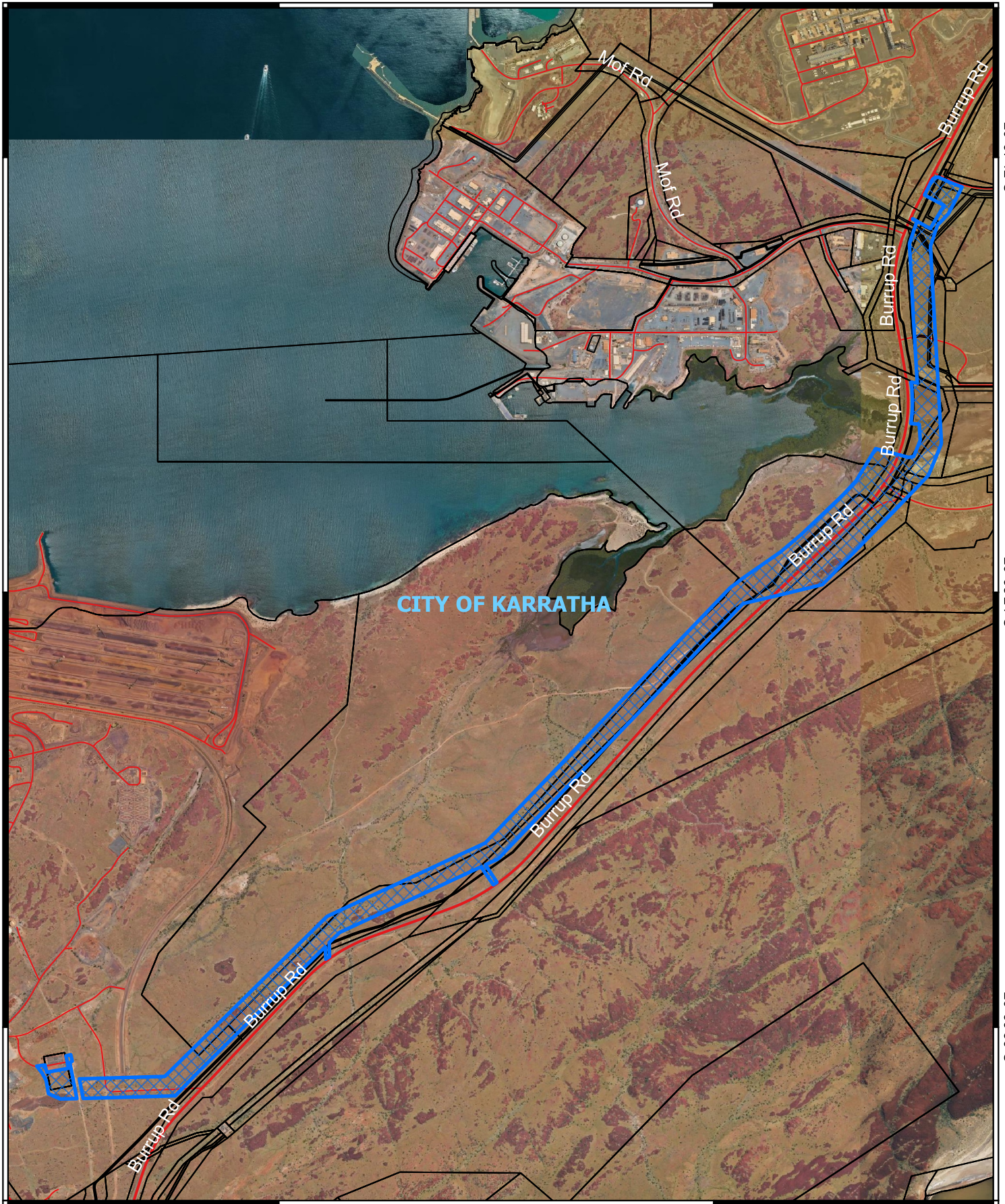
20°37'12"S

20°38'24"S

20°38'24"S

20°39'36"S


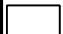

20°39'36"S






116°44'24"E

116°45'36"E

Legend

-  CPS areas applied to clear
-  Land Tenure (LGATE_226) - SLIP
-  Local Government Authorities

Roads

-  National Highway
-  Main
-  Minor



0 0.25 0.5 0.75 1 km



1:20,000

Projection: GDA2020



GOVERNMENT OF
WESTERN AUSTRALIA