

CPS 10386/1 - Map

115°50'24"E

115°50'38"E

115°50'53"E

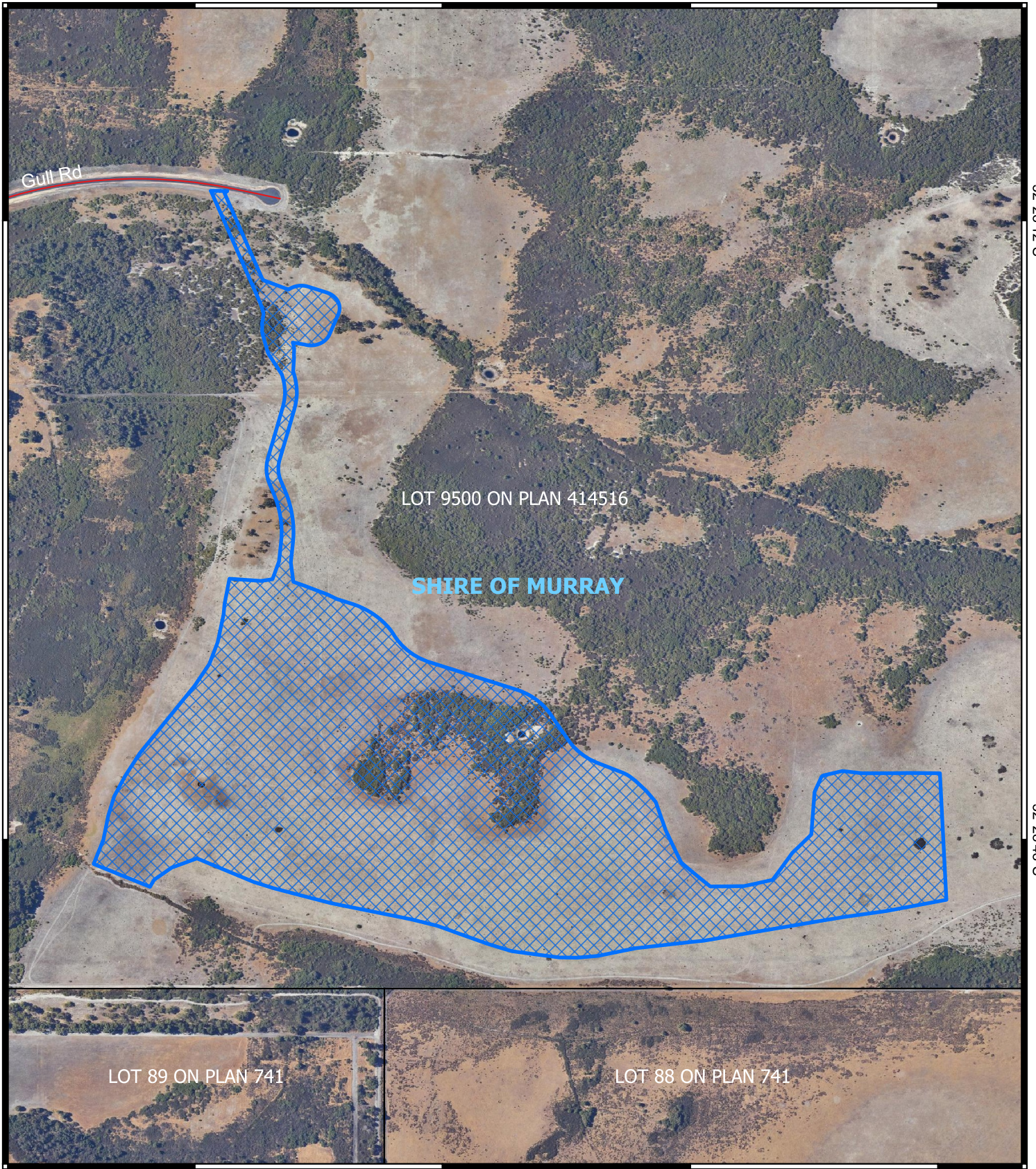
115°51'7"E

32°28'12"S

32°28'12"S

32°28'48"S

32°28'48"S




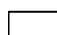

115°50'24"E

115°50'38"E

115°50'53"E

115°51'7"E

Legend

-  CPS areas applied to clear
-  Land Tenure
-  Local Government Authorities

Roads

-  Minor



0 100 200 300 400 500 m



1:6,000

Projection: GDA2020



GOVERNMENT OF
WESTERN AUSTRALIA