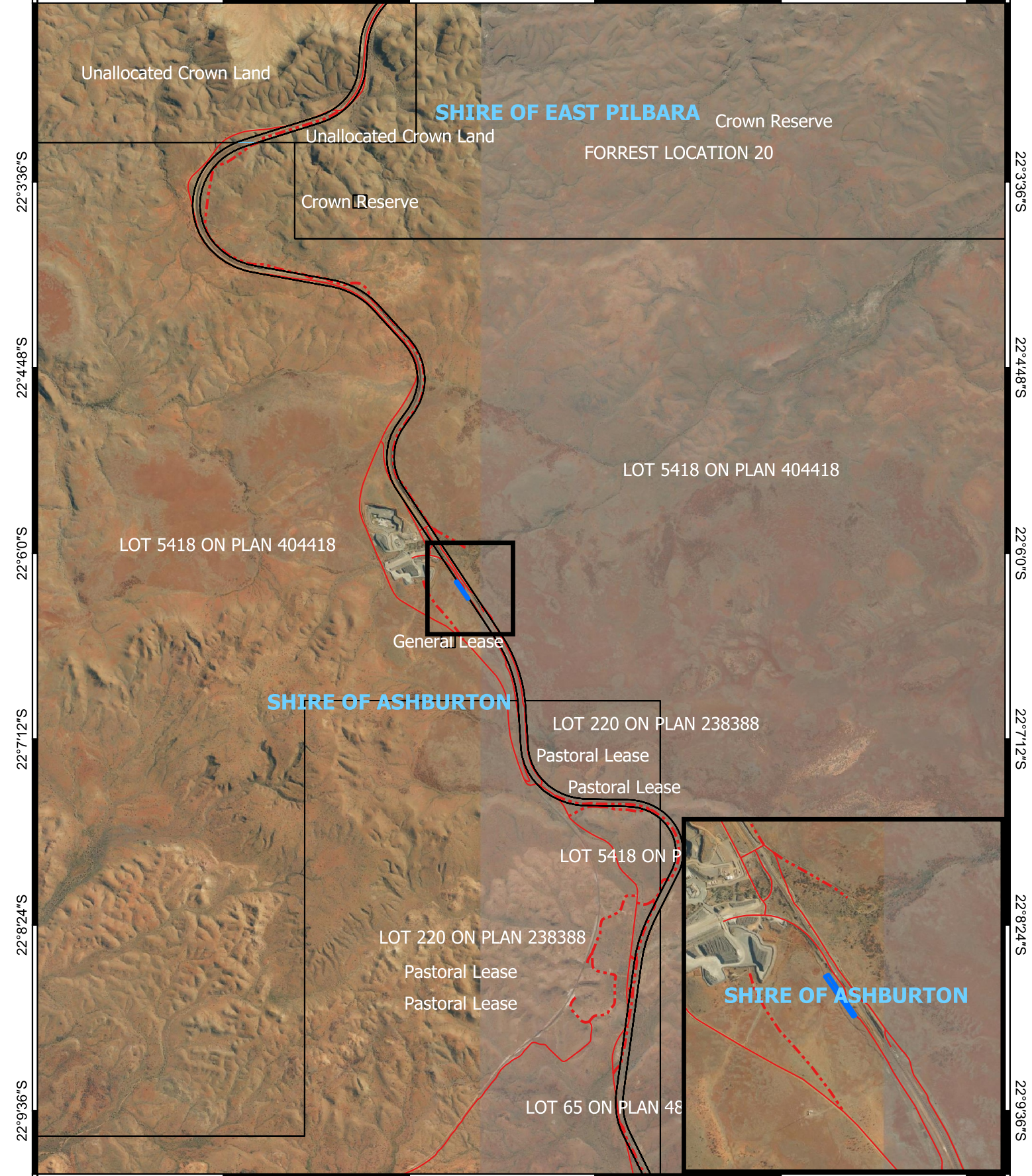



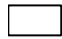

CPS 10387/1a - Context Map

118°57'36"E 118°58'48"E 119°0'0"E 119°1'12"E 119°2'24"E 119°3'36"E



118°57'36"E 118°58'48"E 119°0'0"E 119°1'12"E 119°2'24"E 119°3'36"E

Legend

-  CPS areas applied to clear
-  Land Tenure
-  Local Government Authorities



0 1 2 km



1:45,000

Projection: GDA2020



**GOVERNMENT OF
WESTERN AUSTRALIA**