

CPS 10387/1b - Context Map

119°3'36"E

119°4'48"E

119°6'0"E

22°27'36"S

22°27'36"S

22°28'48"S

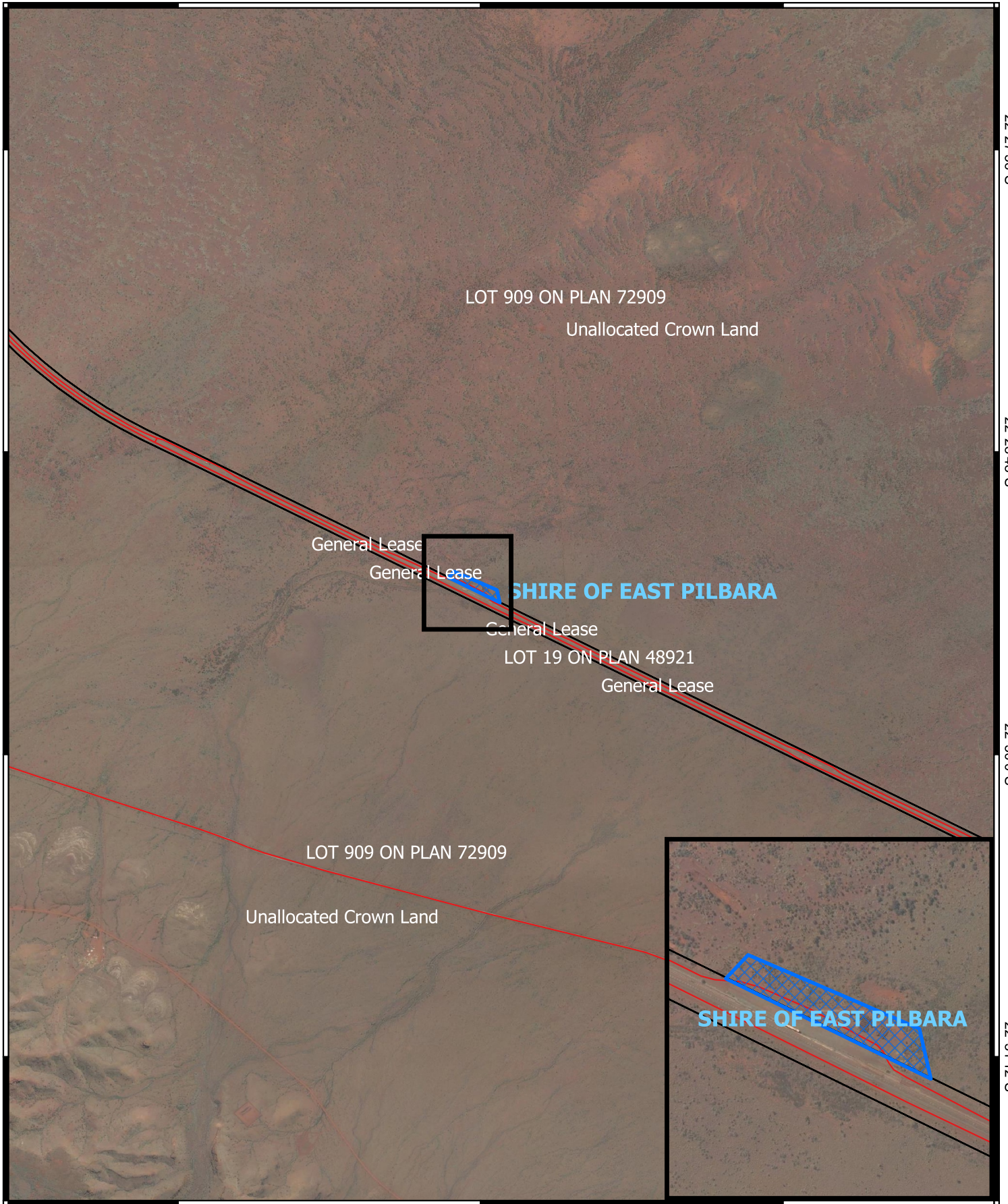
22°28'48"S

22°30'0"S

22°30'0"S

22°31'12"S

22°31'12"S


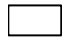



119°3'36"E

119°4'48"E

119°6'0"E

Legend

-  CPS areas applied to clear
-  Land Tenure
-  Local Government Authorities



0 1 2 km



1:28,000

Projection: GDA2020



GOVERNMENT OF
WESTERN AUSTRALIA