

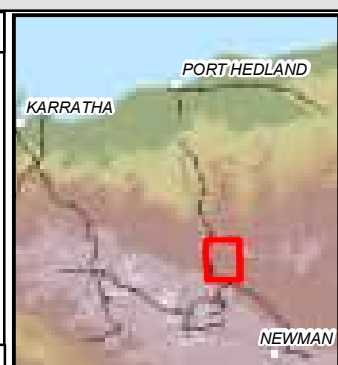


LEGEND

- Proposed NVCP Application Area (GDA2020 Z50)
- Approved Boundary CPS 7009/3 (Newman Strategic NVCP)

Scale: 0, 5.0, 10.0, 15.0 Kilometers

Document Path: G:\AssetDev\Env A&I\01 Approvals\08 Rail\02 NVCP\009 Sleepers 220 to268\05 Spatial\RAIL_009NVCP_001_RevA_0.mxd

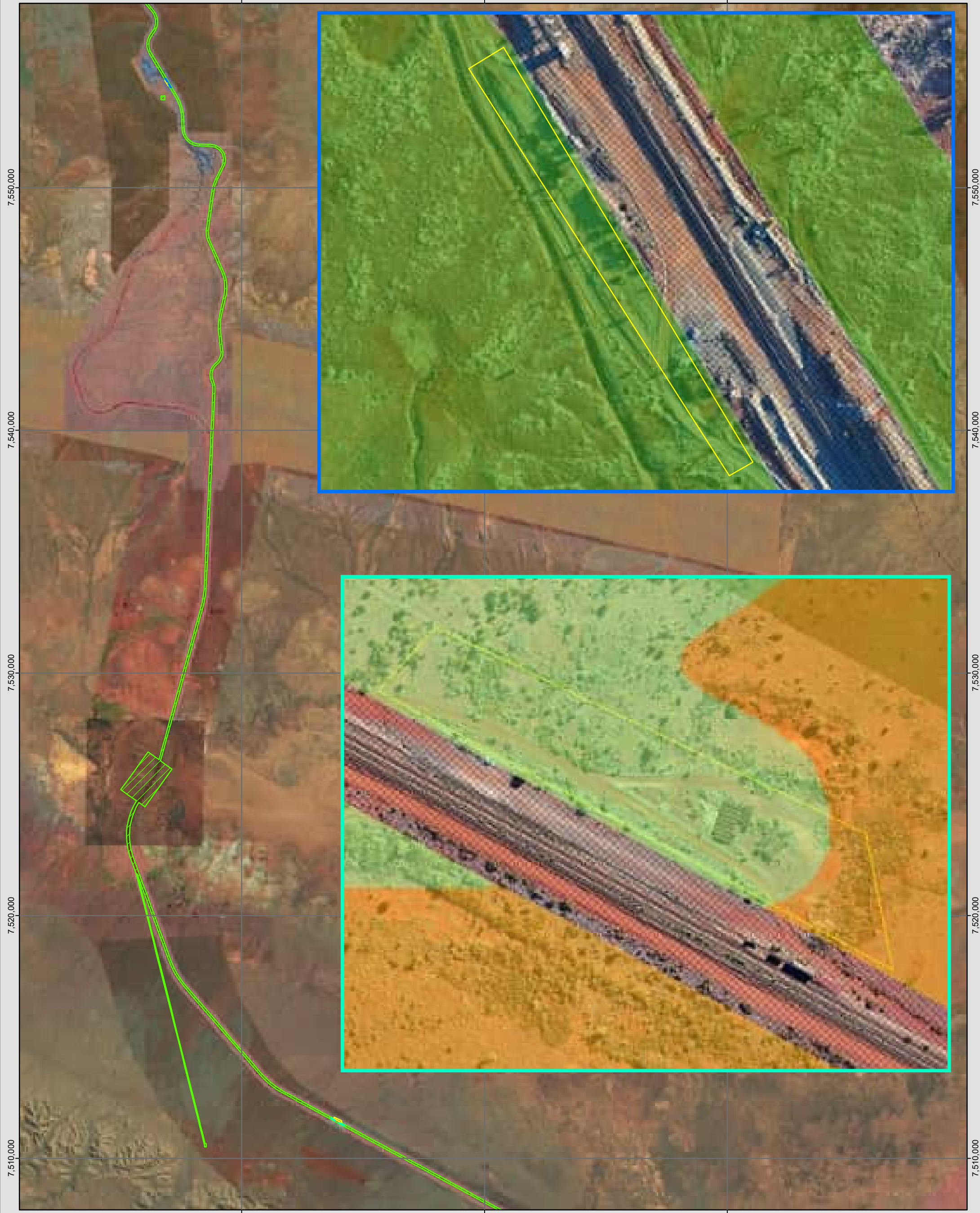


BHP Environmental Approvals

**NEWMAN MAINLINE
OFF TENURE
REHABILITATION ACTIVITES
CHAINAGE 220 AND 268**

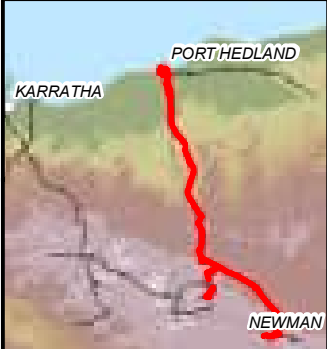
Scale @ A3: 1:140,000 | DATUM: GDA2020/MGA 50 | Dwg: RAIL_009NVCP_001_RevA_0
 Prepared: Chris Hopkins | Revision: FINAL
 Centre: Perth | Date: 22 August 2023

Figure 1



LEGEND

- Proposed NVCP Application Area (GDA2020 Z50)
 - Approved Boundary CPS 7009/3 (Newman Strategic NVCP)
- Vegetation Association Mapping**
- Astrebla* Tussock Grassland (SP AspeAriSpau SifCotrTebc Opa)
 - Acacia* Low Woodland (FP ApAaApr AsyErffPto CcAriArc)
 - Triodia* Hummock Grassland (SP TbTp HIAancAi Ch)
 - Disturbed / Cleared

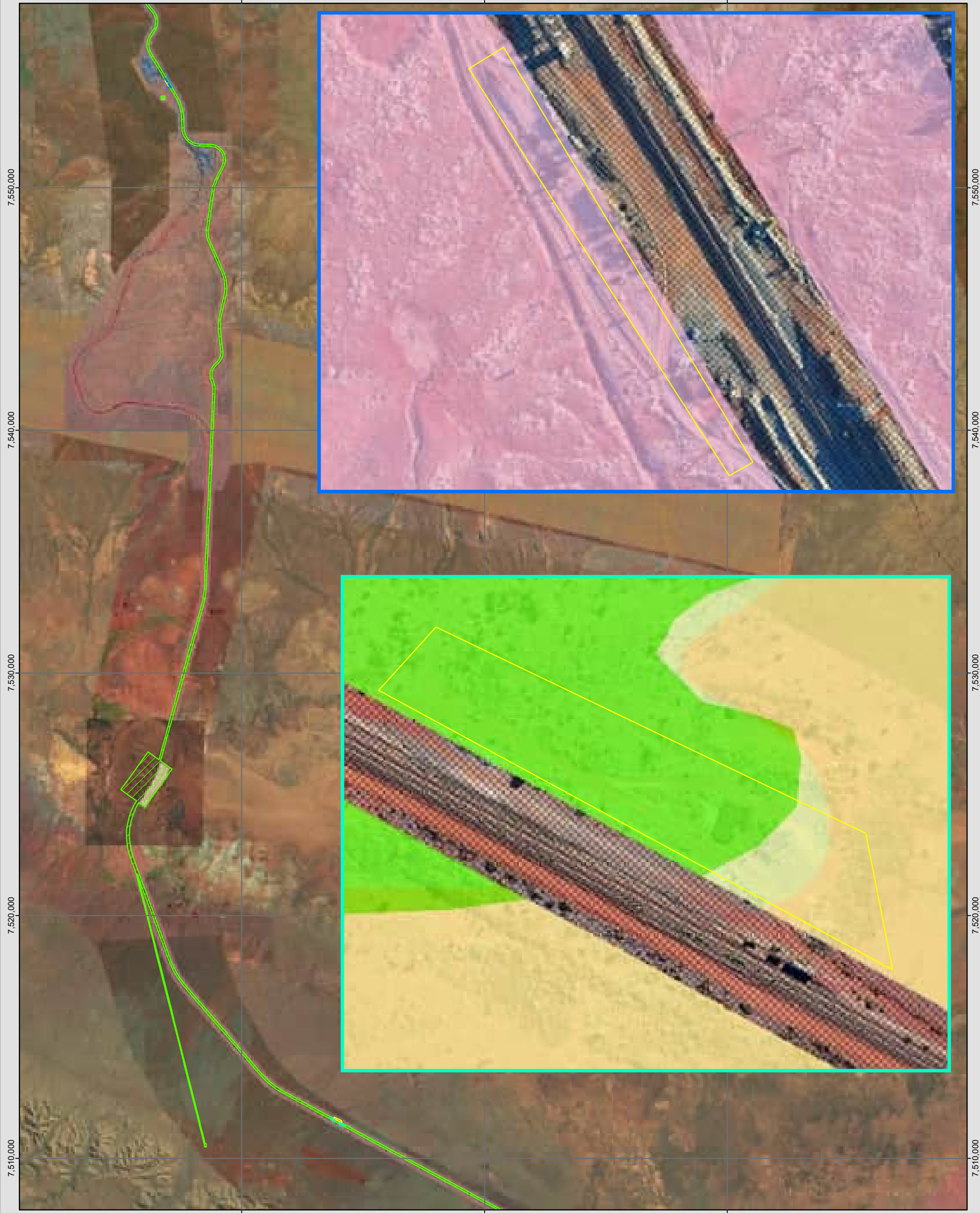


Environmental Approvals

**NEWMAN MAINLINE
OFF TENURE
REHABILITATION ACTIVITES
CHAINAGE 220 AND 268
VEGETATION ASSOCIATIONS**



Scale @ A3: 1:140,000	DATUM: GDA2020/MGA 50	Dwg: RAIL_009NVCP_002_RevA_0
Prepared: Chris Hopkins	Revision: FINAL	Figure 2
Centre: Perth	Date: 22 August 2023	



LEGEND

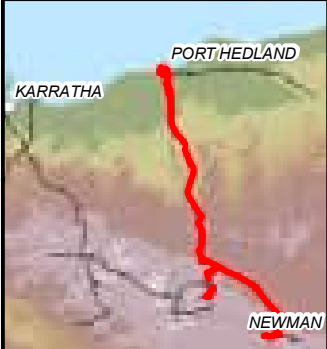
Proposed NVCP Application Area (GDA2020 Z50)

Approved Boundary CPS 7009/3 (Newman Strategic NVCP)

Vertebrate Fauna Habitat

HabitatType

- Gilgai Plain
- Mulga Woodland
- Sand Plain



BHP Environmental Approvals

**NEWMAN MAINLINE
OFF TENURE
REHABILITATION ACTIVITIES
CHAINAGE 220 AND 268
VERTEBRATE FAUNA HABITAT**

Scale @ A3: 1:140,000 DATUM: GDA2020/MGA 50 Dwg: RAIL_009NVCP_003_RevA_0

Prepared: Chris Hopkins Revision: FINAL

Centre: Perth Date: 22 August 2023

Figure 3