

## **Attachment 3**

Site Photos (from GHD, 2020 and Tetra-Tech, 2021)



**Photo 1 Former T&C Building; ACM fragments 3 cm x 3 cm**

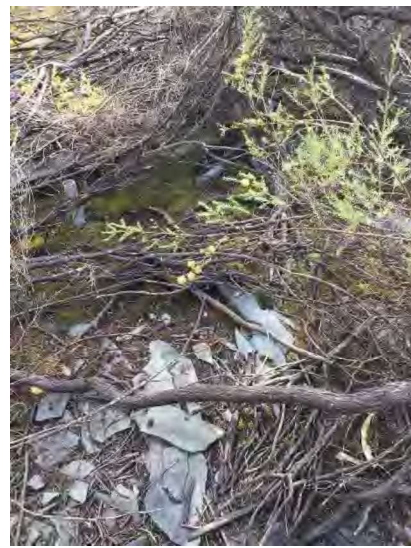


**Photo 2 Former T&C Building; ACM fragments**

Significant amounts (>500) of larger fragments (generally 10 cm x 10 cm and bigger) were noted in vicinity to the former pump house (Photo 3), potentially a result of the structure being pushed over as part of the demolition, with the ACM not limited to one layer on the surface. ACM contamination was also noted extending into the heavily vegetated surrounding area (Photo 4)



**Photo 3 Former pump house; significant ACM fragments**



**Photo 4 Former pump house; significant ACM fragments**

At the former powerhouse and the former observation tower, ACM contamination appeared more isolated than the other impacted areas, largely concentrated around the concrete pads and not significantly widespread (i.e. <2 m from the concrete pads). Additionally the ACM contamination at the former housing area consisted of fragments across the concrete pads, spreading into the adjacent bushland (approximately 2 m).



**Photo 1:** Former radar tracking station – former power house (facing south)



**Photo 2:** Former radar tracking station – former telemetry & control building (facing south)



**Photo 3:** Former radar tracking station – Observation tower (boresight tower)



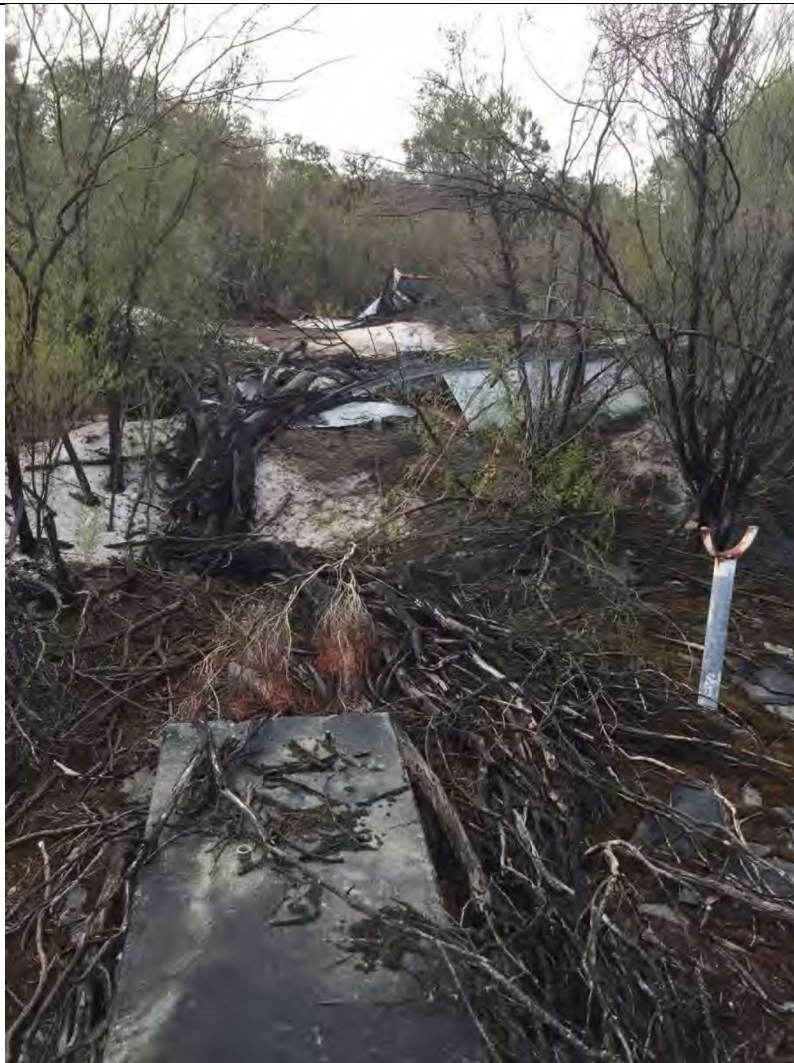
**Photo 4:** Former radar tracking station – former housing (facing south)





**Appendix A:**  
**Site Photographs**

DCARM  
Mucnea Armament Range (0964)

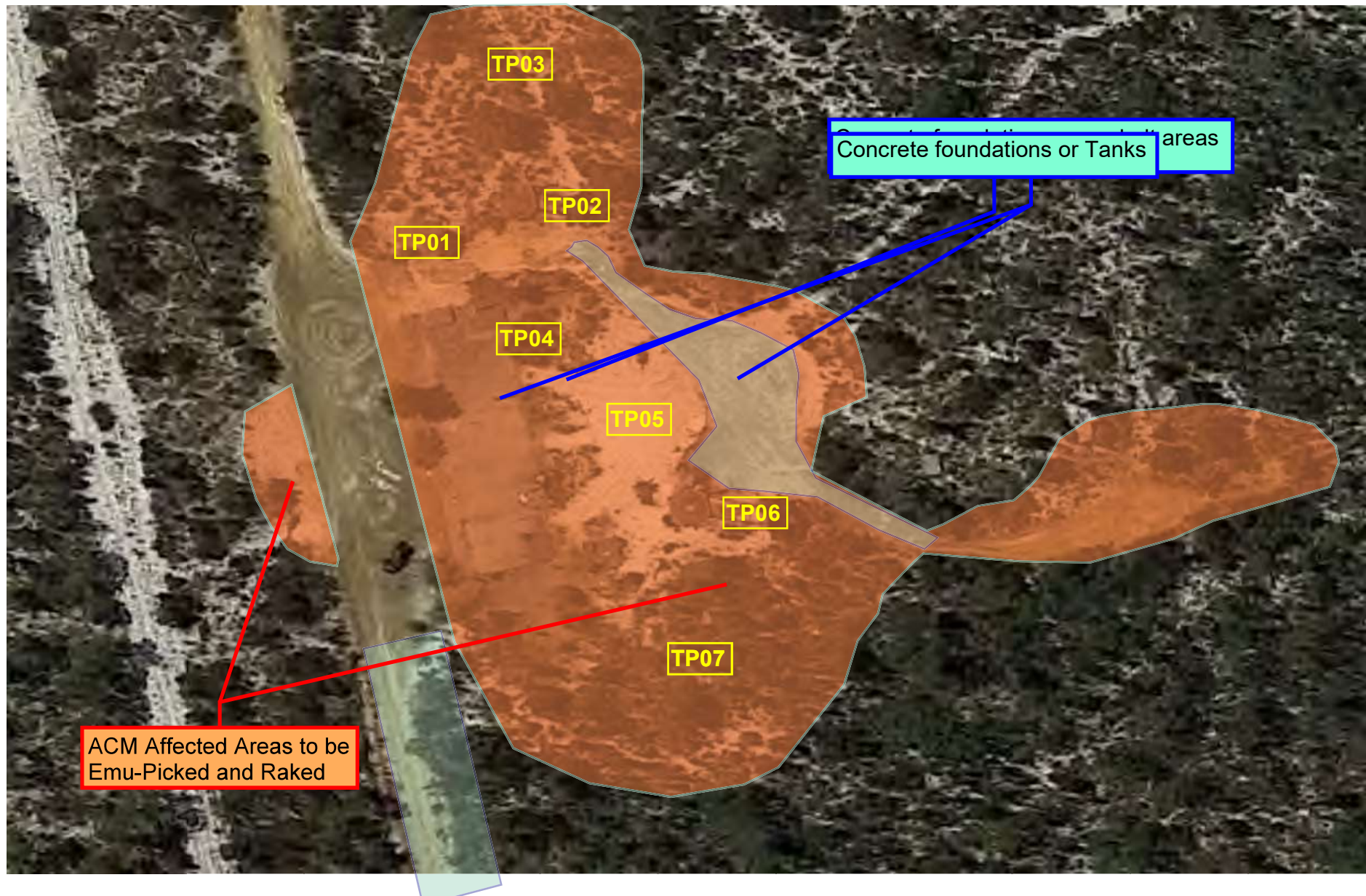


**Photo 5:** Former radar tracking station – former pump house



**Photo 6:** Former radar tracking station – former telemetry & control building





ACM Affected Areas to be  
Emu-Picked and Raked

Concrete foundations or Tanks areas

### ACM Affected Area 1

Grounds Surrounding Main Telemetry and Control  
Building Foundation and Antennas Tower



## **ACM Affected Area 2**

Grounds Surrounding Water Bore Building  
Foundations and Storage Tanks





### **ACM Affected Area 3 & 4**

Grounds Surrounding Powerhouse Foundations and  
Ground to Air Transmitter Tower

## APPENDIX B: PHOTOGRAPHS

---

### Photographs 1:

Area 1 – Visible ACM surface debris



### Photographs 2:

Area 1 – Visible ACM surface debris



### Photographs 3:

Area 2 – Grounds outside Water Bore – Fire damaged ACM debris



### Photographs 4:

Area 2 – Highly deteriorated, fire damaged ACM debris

