

INVESTIGATION AREA SOURCE: MNG, November 2022.
 AERIAL PHOTOGRAPH SOURCE: NearMap, flown September 2022.



PCB Asbestos & Demolition Pty Ltd
 NATIVE VEGETATION CLEARING REFERRAL
 MUCHEA AIR WEAPONS RANGE

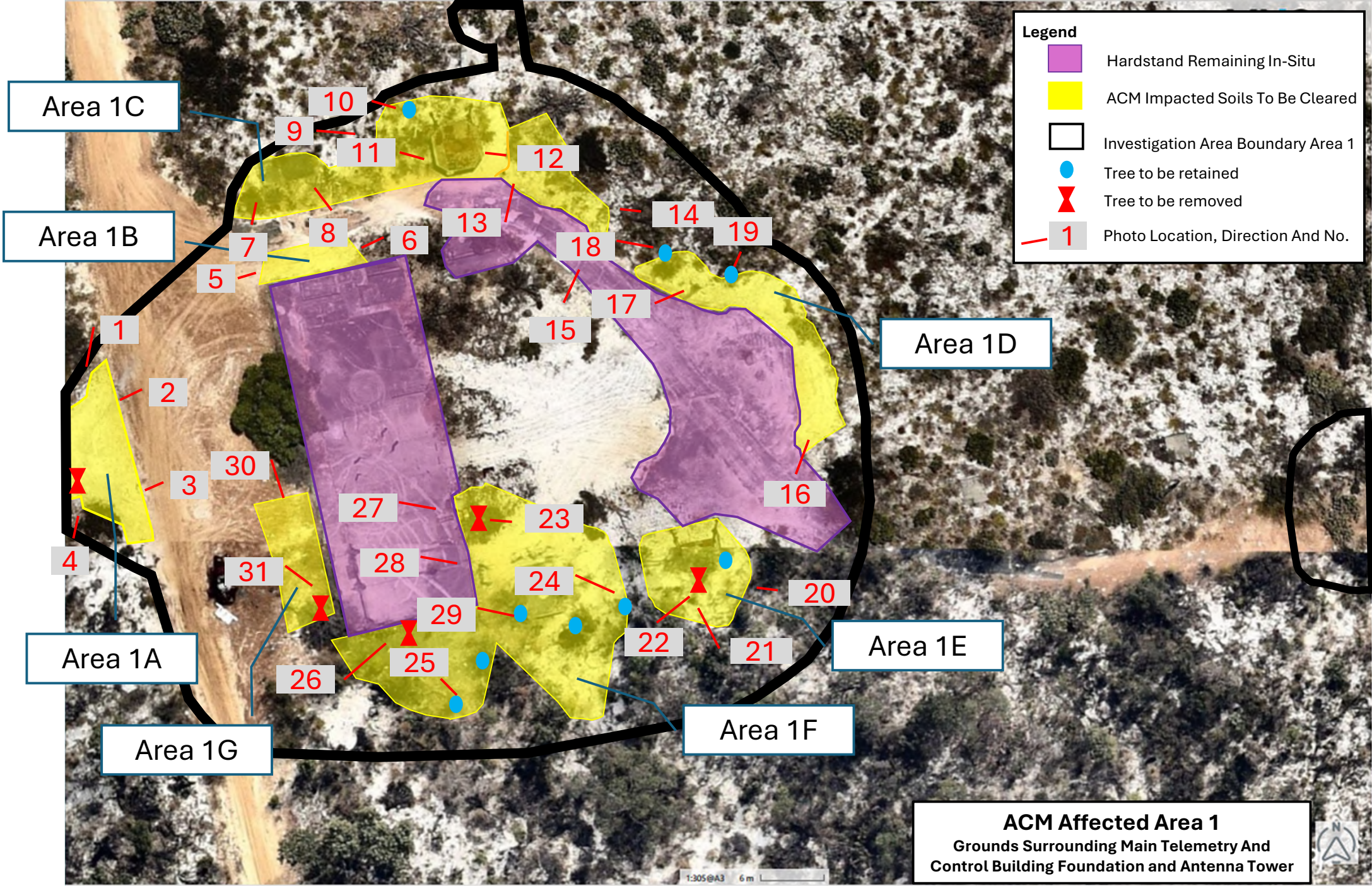
INVESTIGATION AREAS

Drawn: P. Zuvela

Date: 13 Oct 2023

Figure 1

Job: PCB2022-001



Legend

- Hardstand Remaining In-Situ
- ACM Impacted Soils To Be Cleared
- Investigation Area Boundary Area 1
- Tree to be retained
- Tree to be removed
- 1

Area 1C

Area 1B

Area 1D

Area 1A

Area 1E

Area 1G

Area 1F

ACM Affected Area 1
 Grounds Surrounding Main Telemetry And Control Building Foundation and Antenna Tower

1:305@A3 6 m

© Nearmap 2024

Created by Kurtis Kavanagh (Client)
 15th April 2024 at 11:27am (GMT+8)

Photo Locations Area 1



Photo 1 – ACM Impacted
Area 1A Looking South
West

Photo Locations Area 1



Photo 2 – ACM Impacted
Area 1A North End
Looking West

Photo Locations Area 1



Photo 3 – ACM Impacted
Area 1A South End
Looking West

Photo Locations Area 1



Shrub to be removed -1.4m high

Photo 4 – Area 1A South End Looking North

Photo Locations Area 1



Photo 5 – ACM Impacted Area 1B Looking East

Photo Locations Area 1



Photo 6 – ACM Impacted Area 1B Looking West

Photo Locations Area 1



**Photo 7 – ACM Impacted
Area 1C West End
Looking North**

Photo Locations Area 1



Photo 8 – ACM Impacted
Area 1C West End
Looking North

Photo Locations Area 1



Photo 9 – ACM Impacted Area 1C Looking East Towards Tower

Photo Locations Area 1



Photo 10 – ACM Impacted Area 1C Looking East Towards Tower And Banksia Marked To Be Retained

Photo Locations Area 1



Photo 11 – ACM Impacted
Area 1C Looking South
East Towards Tower

Photo Locations Area 1



Photo 12 – ACM Impacted
Area 1C Looking South
East Towards Tower

Photo Locations Area 1



Photo 13 – ACM Impacted Area 1C Looking East From Cleared Track Around Tower

Photo Locations Area 1



Photo 14 – ACM Impacted Area 1C Looking North West Towards Tower

Photo Locations Area 1



Photo 15 – ACM Impacted
Area 1C East End
Looking North East

Photo Locations Area 1



Photo 16 – ACM Impacted
Area 1D Looking North

Photo Locations Area 1



Photo 17 – ACM Impacted
Area 1D Looking South

Photo Locations Area 1



Tree to be retained

Photo 18 – ACM Impacted Area 1D Tree to be retained

Photo Locations Area 1



Photo 19 – ACM Impacted Area 1D Tree to be retained

Photo Locations Area 1



Photo 20 – ACM Impacted Area 1E Looking north towards Area 1C

Photo Locations Area 1



Photo 21 – ACM Impacted Area 1E Looking north towards Area 1C

Fallen tree to be removed

Juvenile trees/ shrubs to be removed

Photo Locations Area 1



Photo 22 – ACM Impacted Area 1E Looking East

Photo Locations Area 1



Photo 23 – ACM Impacted
Area 1F Looking North
West

Photo Locations Area 1



Photo 24 – ACM Impacted Area 1F Looking East

Photo Locations Area 1



Shrub to be retained

Photo 25 – ACM Impacted Area 1F Looking South

Photo Locations Area 1



Photo 26 – ACM Impacted Area 1F Looking South

Photo Locations Area 1



Photo 27 – ACM Impacted Area 1F Looking South

Photo Locations Area 1



Photo 28 – ACM Impacted Area 1F Looking East

Photo Locations Area 1



Photo 29 – ACM Impacted Area 1F Looking East

Photo Locations Area 1



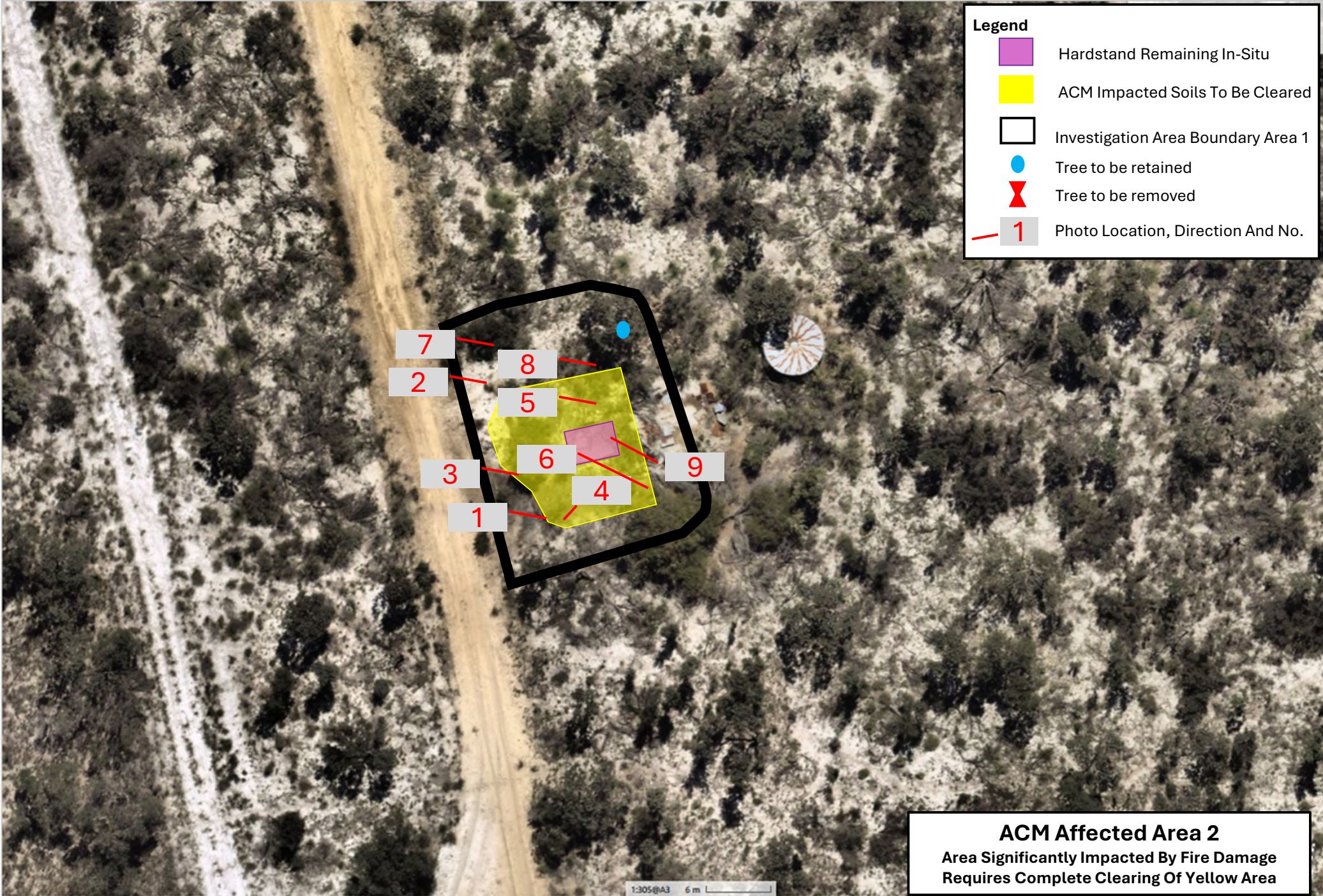
Photo 30 – ACM Impacted
Area 1G Looking South

Photo Locations Area 1



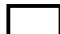





Degraded and low lying shrubs to be removed

Photo 31 – ACM Impacted Area 1G Looking South



Legend

-  Hardstand Remaining In-Situ
-  ACM Impacted Soils To Be Cleared
-  Investigation Area Boundary Area 1
-  Tree to be retained
-  Tree to be removed
-  Photo Location, Direction And No.

ACM Affected Area 2
Area Significantly Impacted By Fire Damage
Requires Complete Clearing Of Yellow Area

Photo Locations Area 2



Photo 1 – ACM Impacted Area 2 Looking East

Photo Locations Area 2

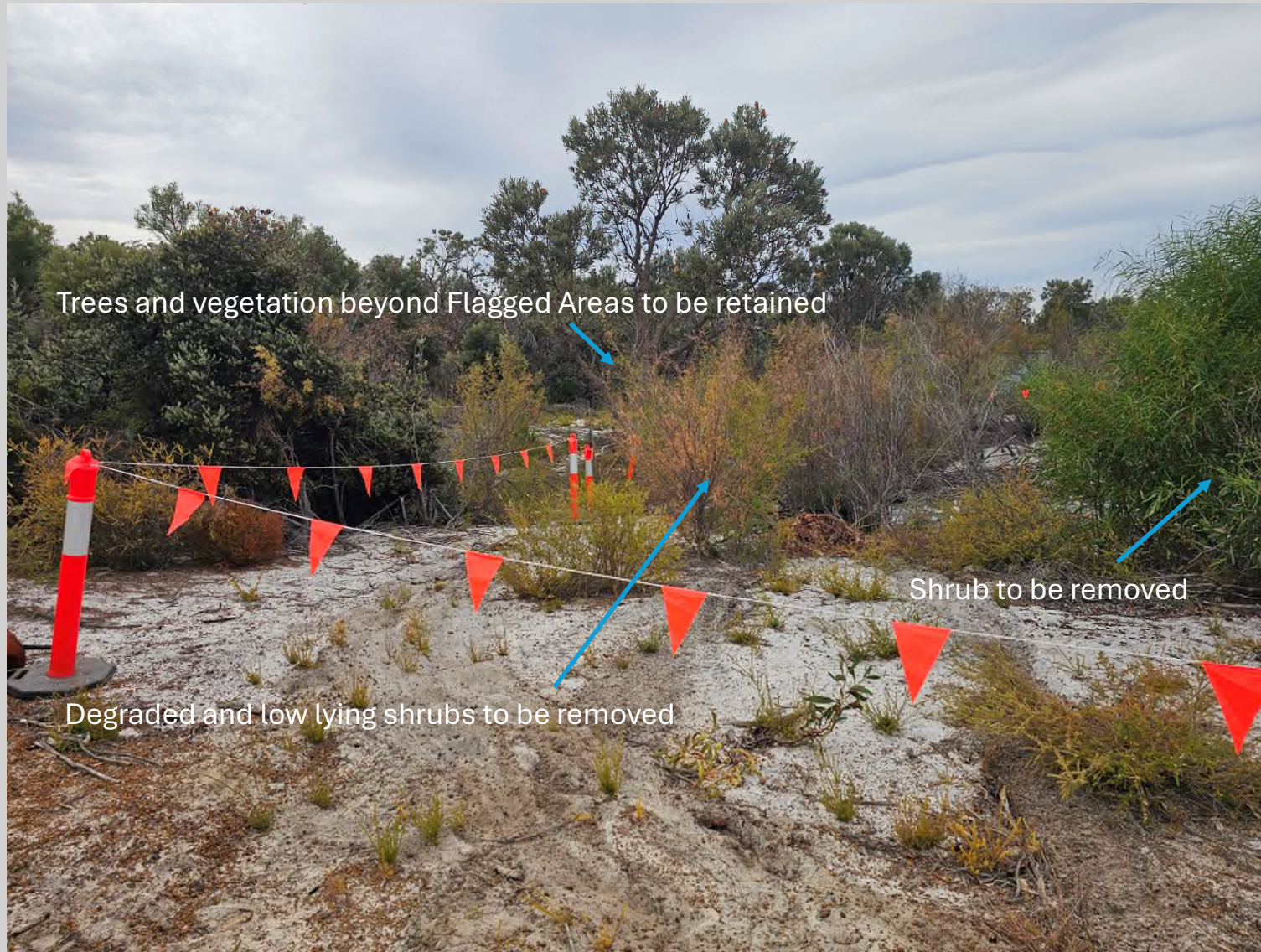


Photo 2 – ACM Impacted Area 2 Looking East

Photo Locations Area 2



Photo 3 – ACM Impacted
Area 2 Looking East

Photo Locations Area 2



Photo 4 – ACM Impacted Area 2 Looking South

Photo Locations Area 2



Photo 5 – ACM Impacted Area 2 Looking East

Photo Locations Area 2

Photo 6 – ACM Impacted
Area 2 Looking East



Degraded and low lying shrubs to be removed

Photo Locations Area 2



Tree Beyond Flagged Area to be retained

Photo 7 – ACM Impacted Area 2 Looking East

Photo Locations Area 2









Photo 8 – ACM Impacted Area 2 Looking East

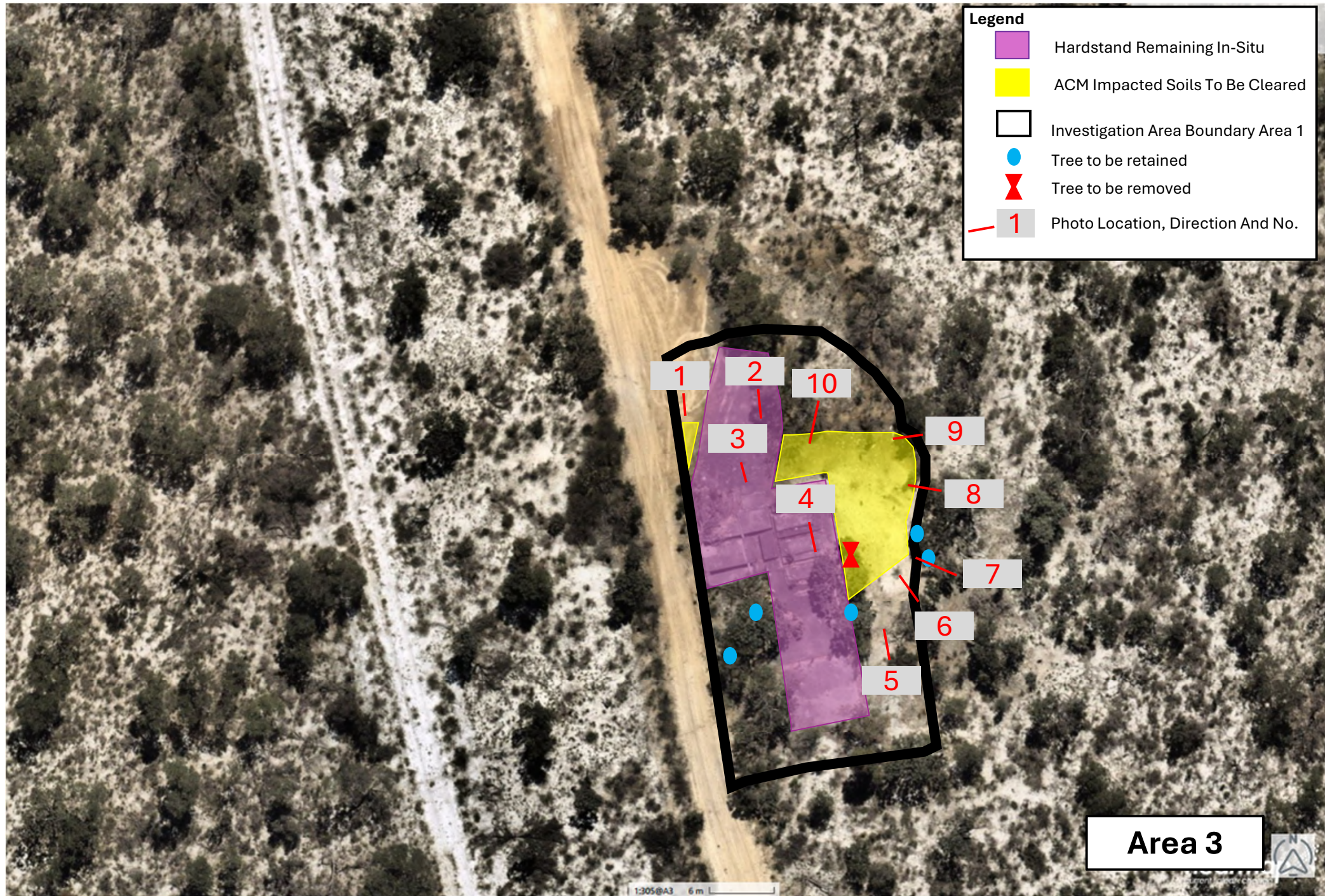
Photo Locations Area 2



Photo 9 – ACM Impacted
Area 2 Looking West

Legend

-  Hardstand Remaining In-Situ
-  ACM Impacted Soils To Be Cleared
-  Investigation Area Boundary Area 1
-  Tree to be retained
-  Tree to be removed
-  Photo Location, Direction And No.



Area 3



Photo Locations Area 3



Photo 1 – ACM Impacted Area 3

Photo Locations Area 3



Photo 2 – ACM Impacted Area 3

Photo Locations Area 3



Photo 3 – ACM Impacted Area 3

Photo Locations Area 3



Tree Within Flagged Area to be Removed

Photo 4 – ACM Impacted Area 3

Photo Locations Area 3



Photo 5 – ACM Impacted Area 3

Photo Locations Area 3



Tree Within Flagged Area to be Removed As Indicated on Photo 4

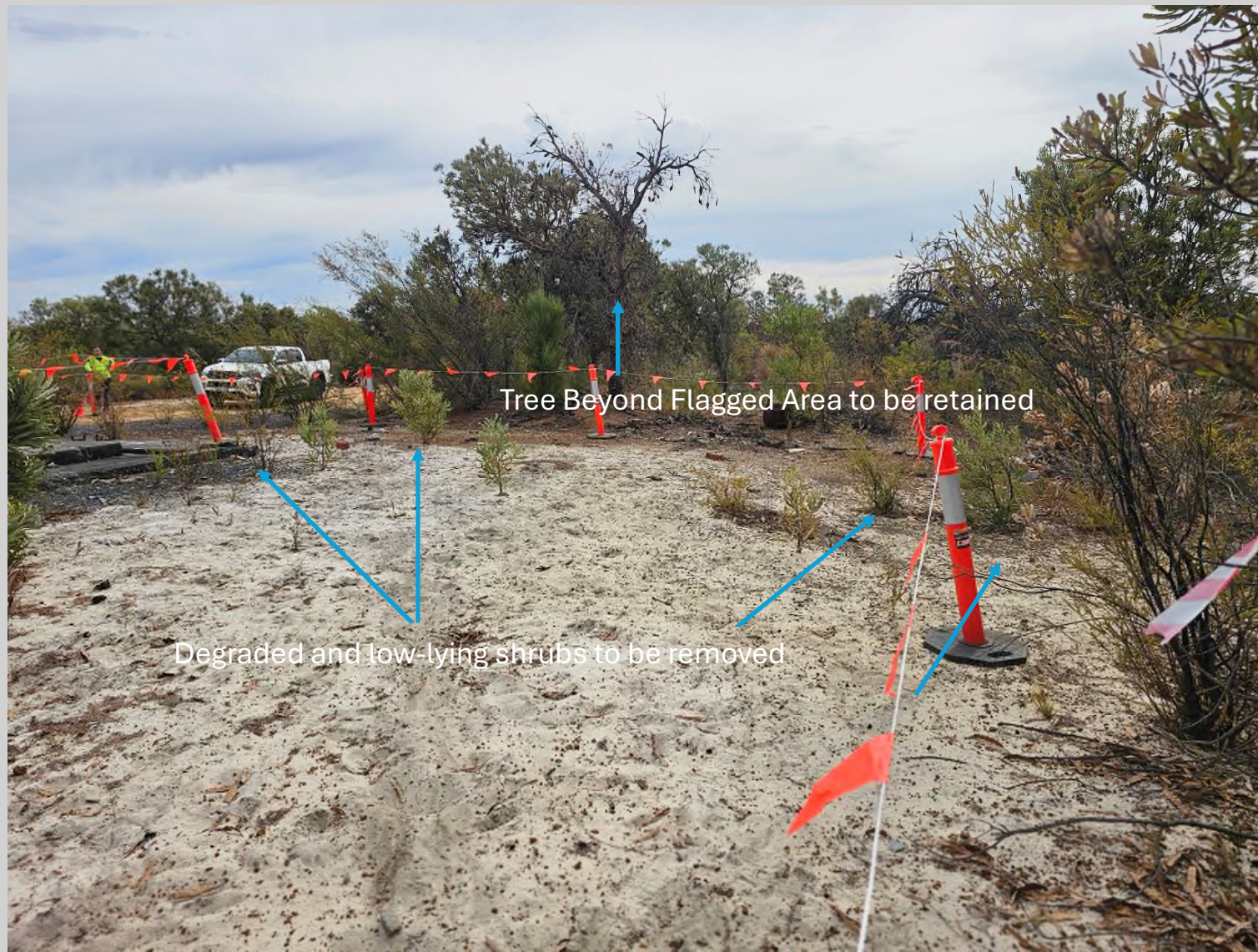
Photo 6 – ACM Impacted Area 3

Photo Locations Area 3



Photo 7 – ACM Impacted Area 3

Photo Locations Area 3



Tree Beyond Flagged Area to be retained

Degraded and low-lying shrubs to be removed

Photo 8 – ACM Impacted Area 3

Photo Locations Area 3









Photo 9 – ACM Impacted Area 3

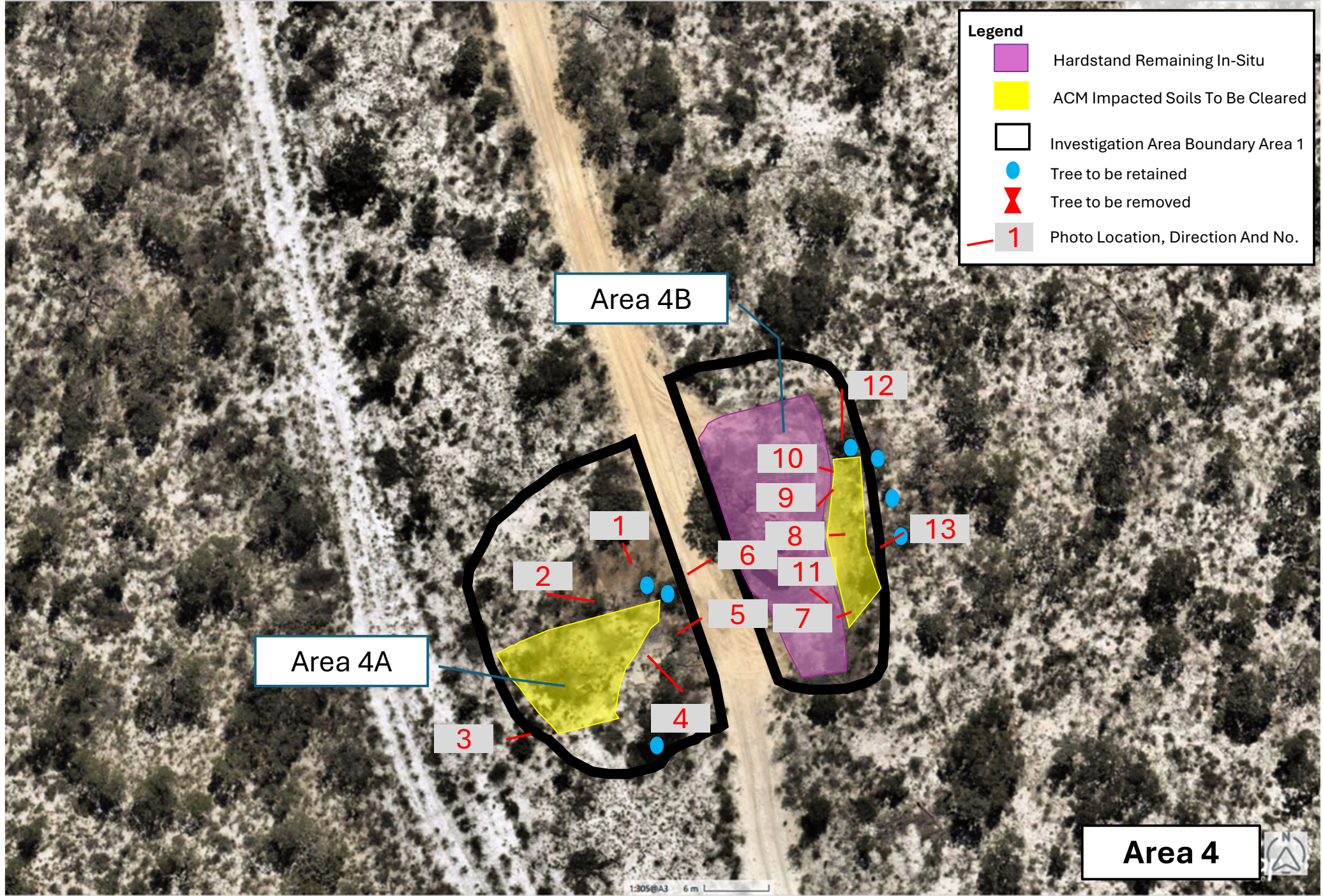
Photo Locations Area 3



Photo 10 – ACM Impacted Area 3

Legend

-  Hardstand Remaining In-Situ
-  ACM Impacted Soils To Be Cleared
-  Investigation Area Boundary Area 1
-  Tree to be retained
-  Tree to be removed
-  Photo Location, Direction And No.



Area 4A

Area 4B

Area 4



1:305@A3 6 m

Photo Locations Area 4



Photo 1 – ACM Impacted Area 4A

Photo Locations Area 4



Photo 2 – ACM Impacted Area 4A

Photo Locations Area 4



Degraded and low-lying shrubs to be removed

Photo 3 – ACM Impacted Area 4A

Photo Locations Area 4



Photo 4 – ACM Impacted Area 4A

Photo Locations Area 4



Photo 5 – ACM Impacted Area 4A

Photo Locations Area 4



Photo 6 – ACM Impacted Area 4A

Photo Locations Area 4



Photo 7 – ACM Impacted Area 4B

Photo Locations Area 4



Photo 8 – ACM Impacted Area 4B

Photo Locations Area 4



Photo 9 – ACM Impacted Area 4B

Photo Locations Area 4



Trees Beyond Flagged Area to be retained

Degraded and low-lying shrubs to be removed

Photo 10 – ACM Impacted Area 4B

Photo Locations Area 4



Photo 11 – ACM Impacted Area 4B

Photo Locations Area 4

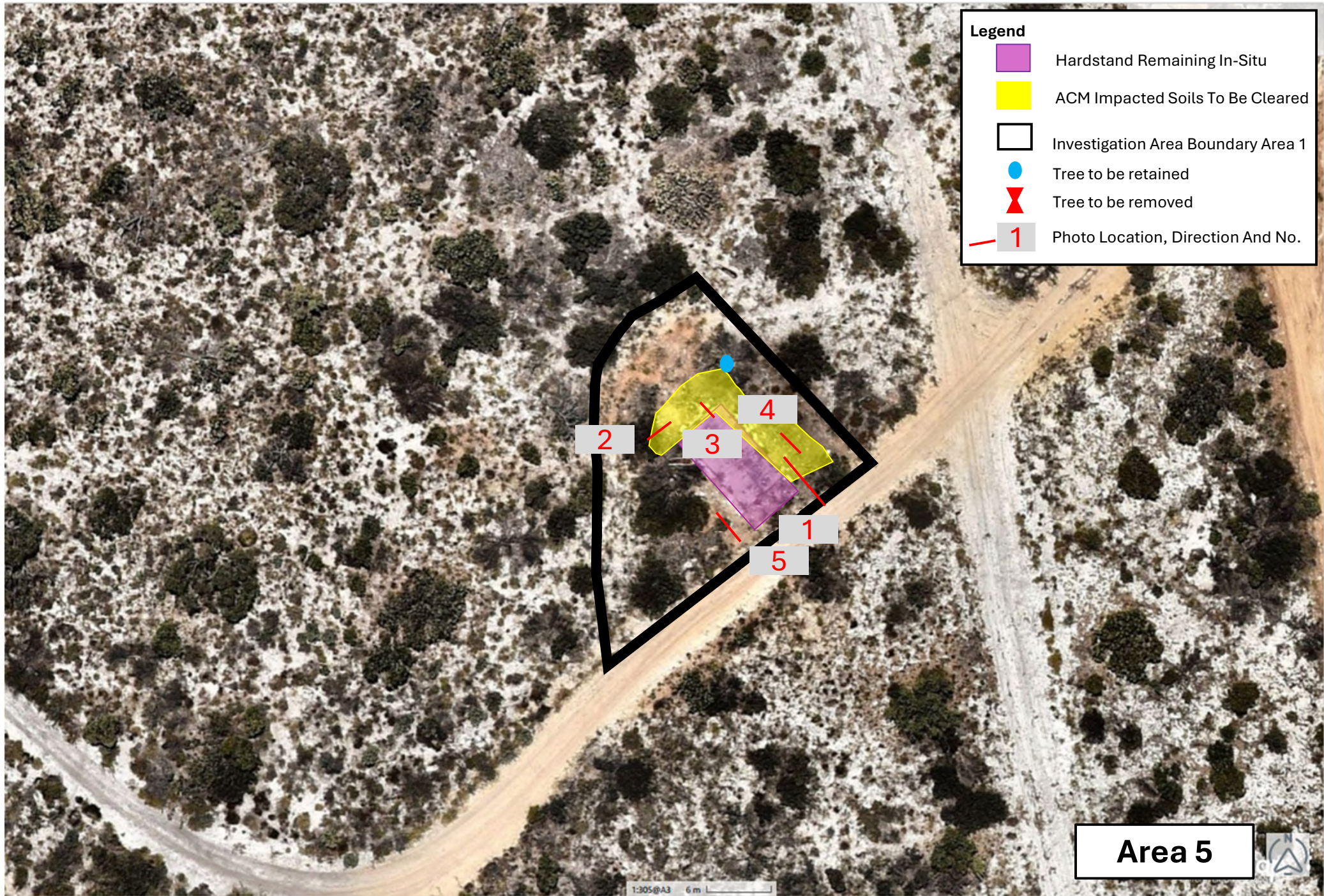


Photo 12 – ACM Impacted Area 4B







Photo Locations Area 4



Photo 13 – ACM Impacted Area 4B



Legend

-  Hardstand Remaining In-Situ
-  ACM Impacted Soils To Be Cleared
-  Investigation Area Boundary Area 1
-  Tree to be retained
-  Tree to be removed
-  Photo Location, Direction And No.

Area 5



1:305@A3 6 m

Photo Locations Area 5



Photo 1 – ACM Impacted Area 5

Photo Locations Area 5



Trees Beyond Flagged Area to be retained

Degraded and low-lying shrubs to be removed

Photo 2 – ACM Impacted Area 5

Photo Locations Area 5



Photo 3 – ACM Impacted Area 5

Photo Locations Area 5



Trees Beyond Flagged Area to be retained

Degraded and low-lying shrubs to be removed

Photo 4 – ACM Impacted Area 5

Photo Locations Area 5



Photo 5 – ACM Impacted Area 5

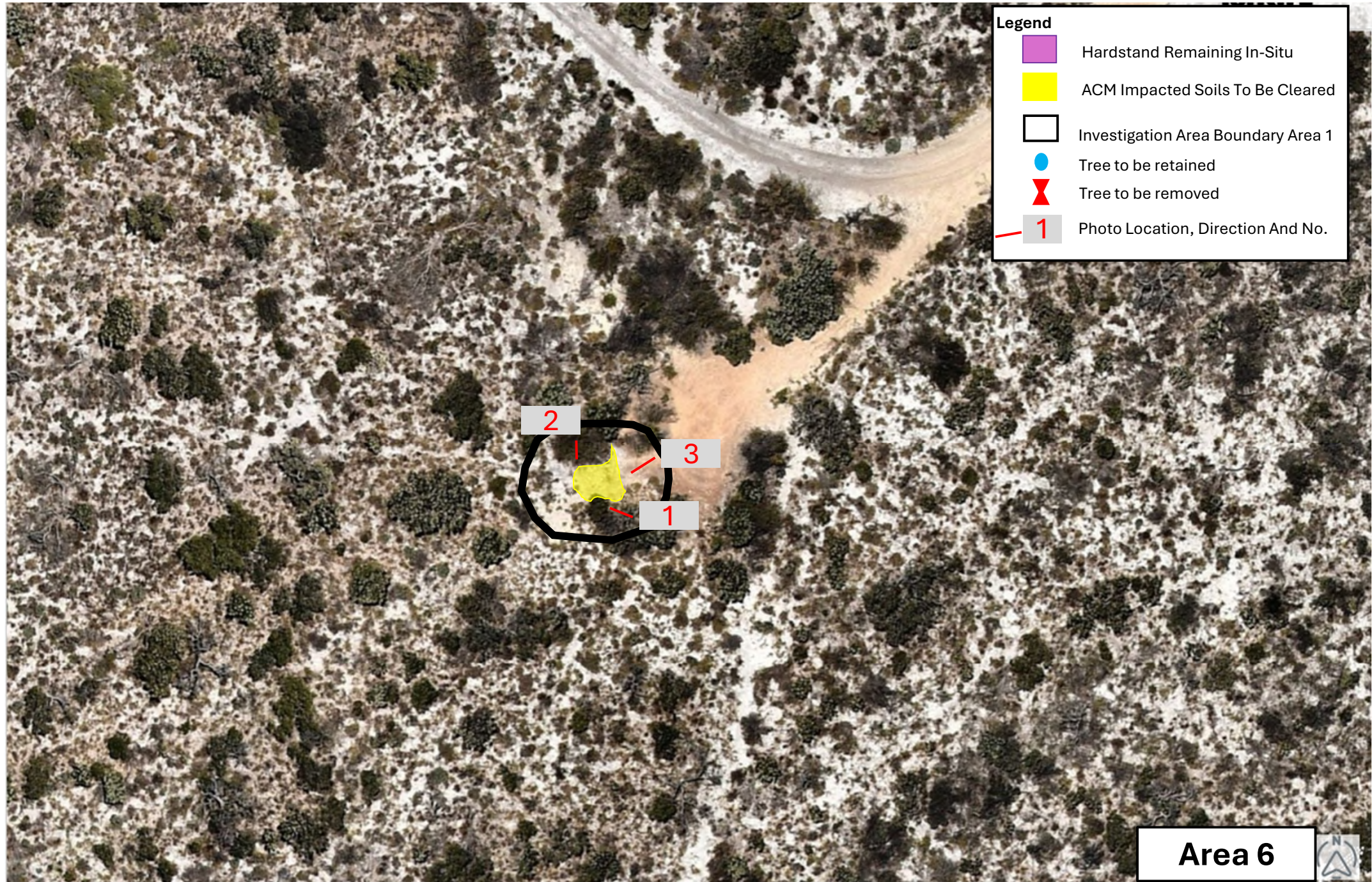


Photo Locations Area 6

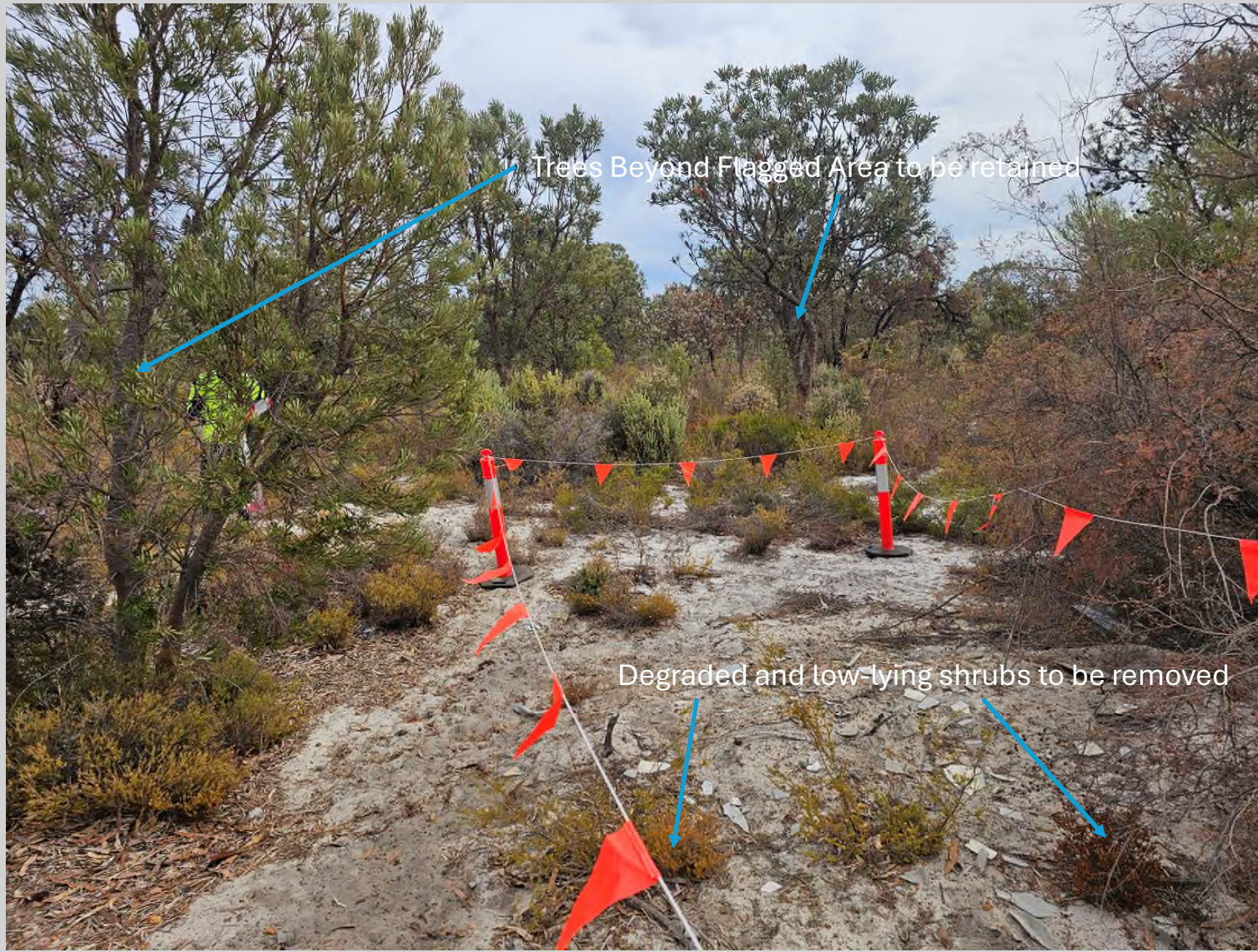


Photo 1 – ACM Impacted Area 6

Photo Locations Area 6



Photo 2 – ACM Impacted Area 6

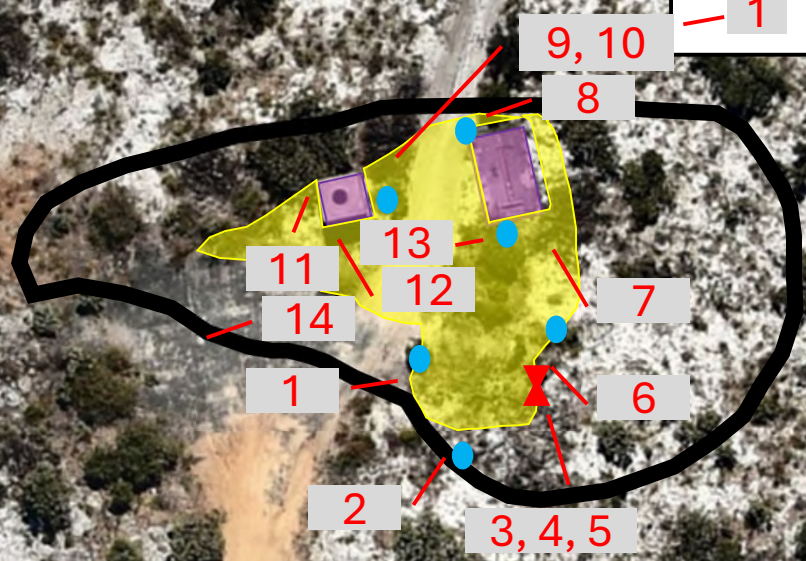
Photo Locations Area 6



Photo 3 – ACM Impacted Area 6

Legend

- Hardstand Remaining In-Situ
- ACM Impacted Soils To Be Cleared
- Investigation Area Boundary Area 1
- Tree to be retained
- Tree to be removed
- 1 Photo Location, Direction And No.



Area 7



Photo Locations Area 7



Tree Within Flagged Area Marked To Be Retained

Degraded and low-lying shrubs to be removed

Photo 1 – ACM Impacted Area 7

Photo Locations Area 7



Trees Beyond Flagged Area to be retained

Degraded and low-lying shrubs to be removed

Photo 2 – ACM Impacted Area 7

Photo Locations Area 7



Trees Beyond Flagged Area to be retained

Tree Within Flagged Area Marked To Be Retained

Degraded, dead and low-lying shrubs and trees to be removed

Photo 3 – ACM Impacted Area 7

Photo Locations Area 7



Photo 4 – ACM Impacted Area 7

Photo Locations Area 7



Photo 5 – ACM Impacted Area 7

Photo Locations Area 7



Photo 6 – ACM Impacted Area 7

Photo Locations Area 7



Photo 7 – ACM Impacted Area 7

Photo Locations Area 7



Photo 8 – ACM Impacted Area 7

Photo Locations Area 7



Photo 9 – ACM Impacted Area 7

Photo Locations Area 7



Photo 10 – ACM Impacted Area 7

Photo Locations Area 7



Photo 11 – ACM Impacted Area 7

Photo Locations Area 7



Photo 12 – ACM Impacted Area 7

Photo Locations Area 7



Degraded and low-lying shrubs to be removed

Photo 13 – ACM Impacted Area 7

Photo Locations Area 7



Hardstand and shrubs to be remain outside flagged area

Photo 14 – ACM Impacted Area 7