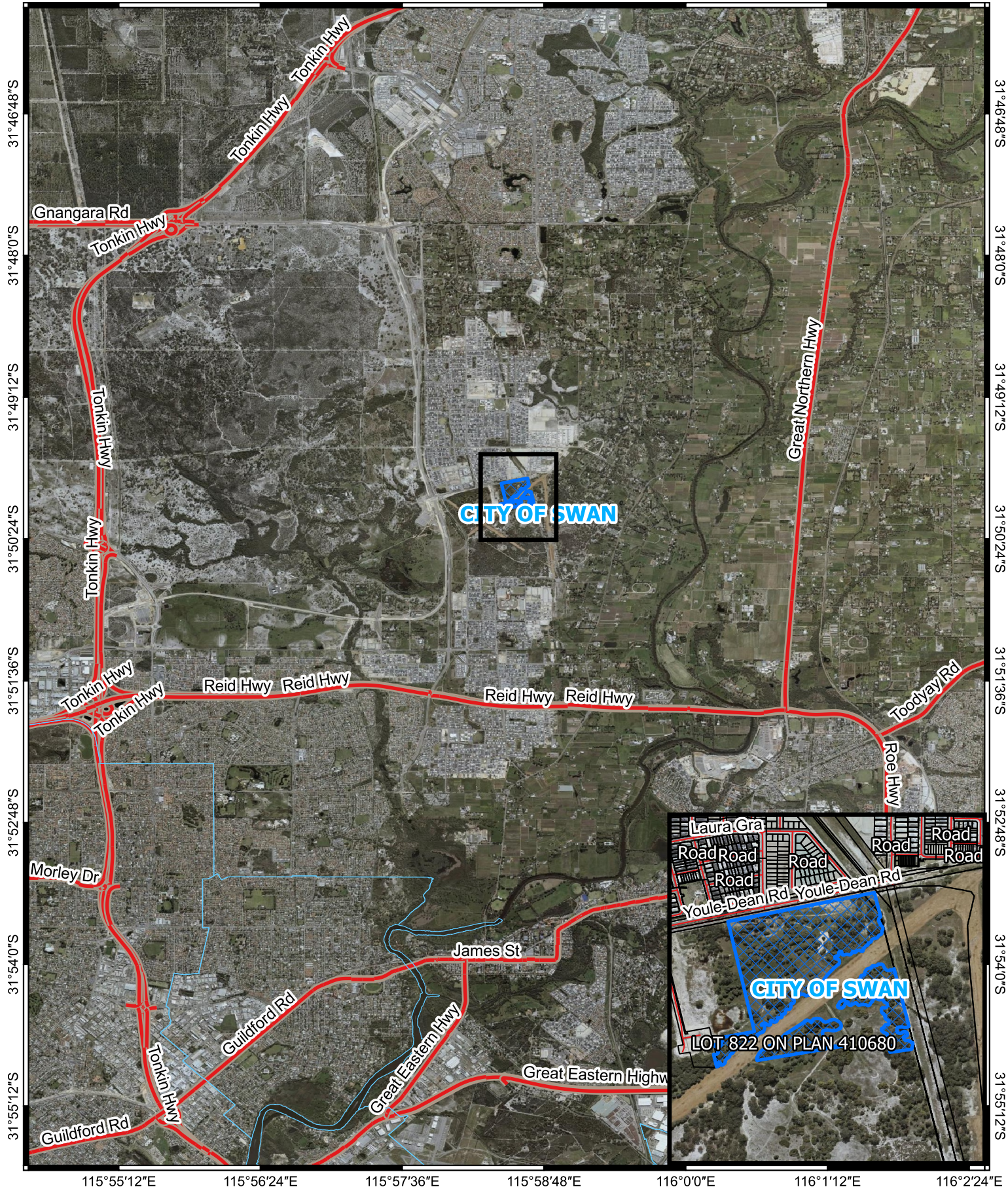


CPS 10424/1 - Context Map

115°55'12"E 115°56'24"E 115°57'36"E 115°58'48"E 116°0'0"E 116°1'12"E 116°2'24"E







31°46'48"S
31°48'0"S
31°49'12"S
31°50'24"S
31°51'36"S
31°52'48"S
31°54'0"S
31°55'12"S

31°46'48"S
31°48'0"S
31°49'12"S
31°50'24"S
31°51'36"S
31°52'48"S
31°54'0"S
31°55'12"S

115°55'12"E 115°56'24"E 115°57'36"E 115°58'48"E 116°0'0"E 116°1'12"E 116°2'24"E

Legend

-  CPS areas applied to clear
-  Local Government Authorities
-  National Highway
-  State Highway



1:50,000

Projection: GDA2020



GOVERNMENT OF WESTERN AUSTRALIA