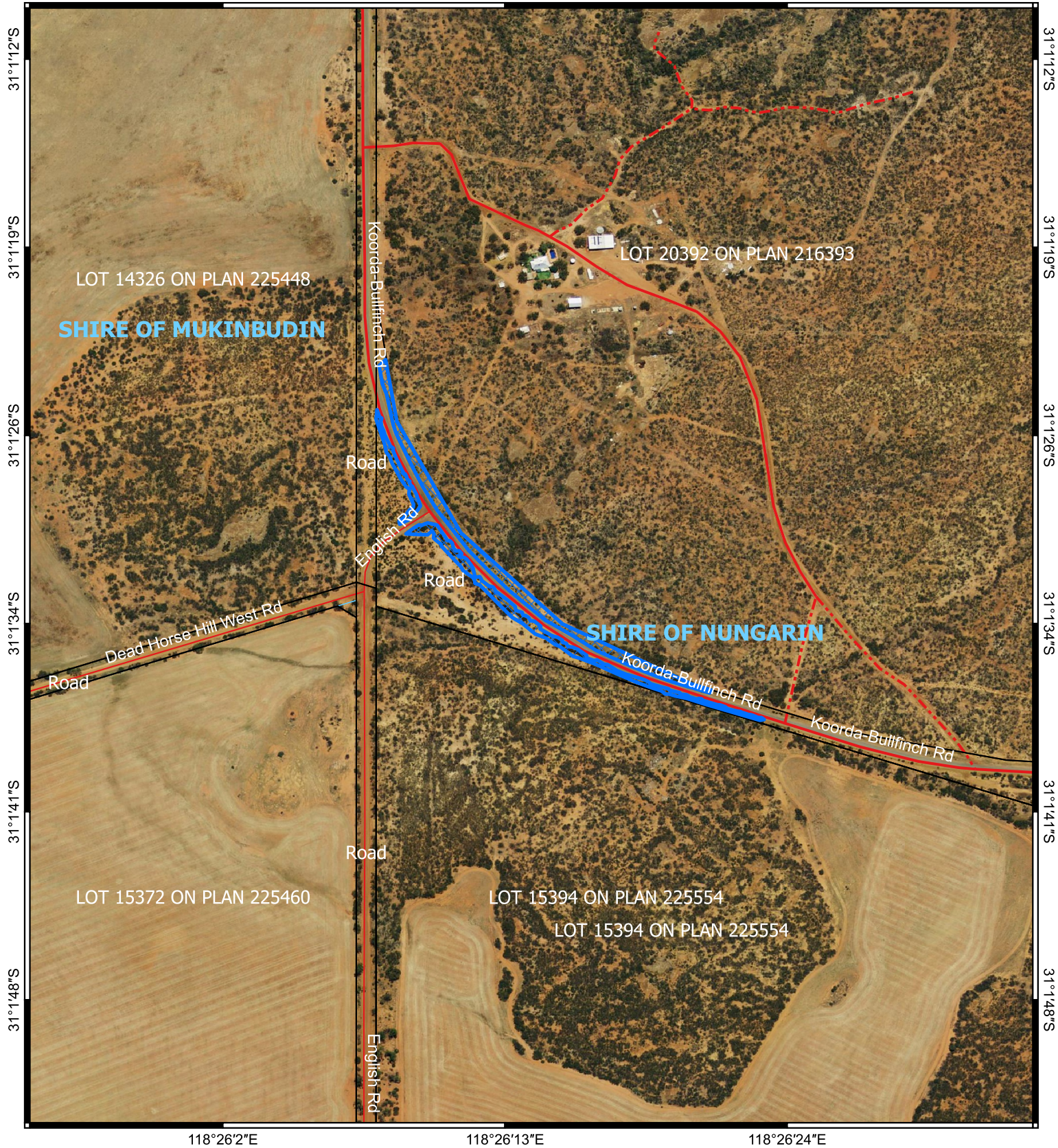


CPS 10435/1 - Map

118°26'2"E

118°26'13"E

118°26'24"E


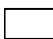



118°26'2"E

118°26'13"E

118°26'24"E

Legend

-  CPS areas applied to clear
-  Land Tenure
-  Local Government Authorities

Roads

-  Main
-  Minor

0 200 400 m



1:4,007



Projection: GDA2020



GOVERNMENT OF
WESTERN AUSTRALIA