

CPS 10524/1 - Map A

116°26'24"E

116°26'28"E

116°26'31"E

31°28'44"S

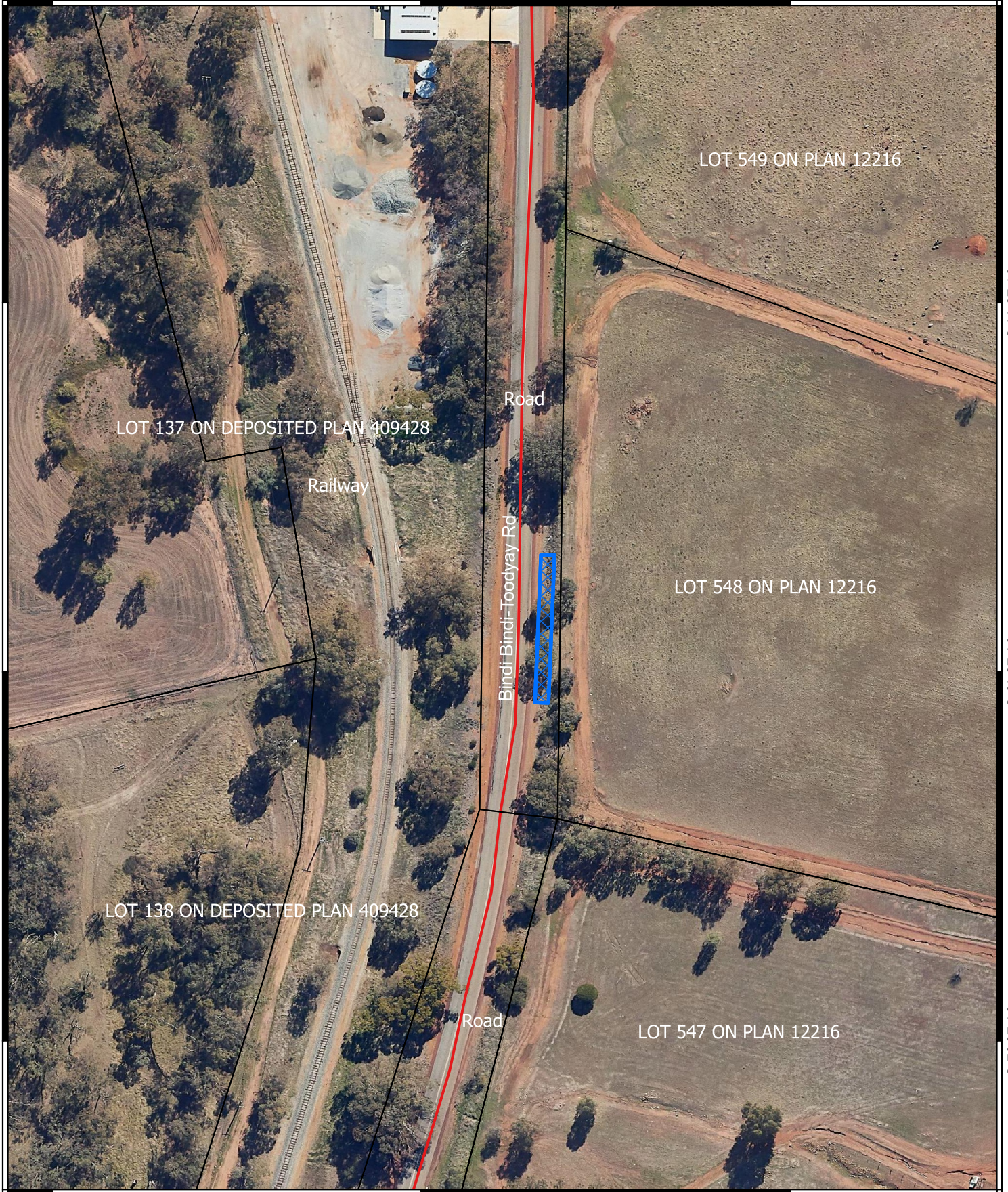
31°28'48"S

31°28'52"S

31°28'44"S

31°28'48"S

31°28'52"S


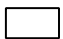
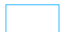


116°26'24"E

116°26'28"E

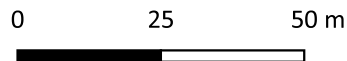
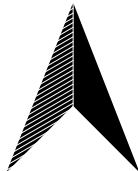
116°26'31"E

Legend

-  CPS areas applied to clear
-  Land Tenure (LGATE_226) - SLIP
-  Local Government Authorities

Roads

-  Main



Projection: GDA 2020

1:1,000



GOVERNMENT OF
WESTERN AUSTRALIA