



Application to amend a clearing permit – Part 7 Update Report – CPS 10545/2

This report describes the progress towards revegetating and rehabilitating the environmental offset for clearing under permit CPS 1054/2 as required under *Part 7 of the Application to amend a clearing permit*.

1. On 13 December 2024, the Shire's Natural Areas Specialist – Jeanette Reynolds, Senior Environmental Officer – Merise Blackburn, and Landcare SJ's Senior Environmental Coordinator - Drew Batty visited the site to discuss the revegetation works. This site visit instigated the *Application to amend a clearing permit* following the observation that the existing offset area contained a small area of *Melaleuca preissiana* dampland.
 - Adjusting the offset boundary will have the advantages of:
 - Improving the condition of Marri woodland portion of the reserve and increasing foraging habitat for Black Cockatoos. A fire in the last five years damaged native vegetation in this area, killing several mature marri trees and reducing the condition of the understory. The amended area better encompasses the vegetation impacted by the fire,
 - Enhancing connectivity of the Marri woodland, as the current offset is separated into two polygons, and
 - Allowing the Shire to focus its revegetation efforts more cost effectively and efficiently.
2. The Shire has developed a project brief outlining the required offset revegetation and rehabilitation tasks to be undertaken at King Road Pony Club Reserve, Lot 427 On Deposited Plan 202731, Oldbury. The Shire will seek quotes from qualified environmental consultants according to the below scope.
 - Note that the offset aims and map will be adjusted pending the outcome of the amendment application.

1. Brief

The Shire is seeking quotations from suitably qualified contractors to undertake the implementation of revegetation works for a rehabilitation offset project at the King Road Pony Club Reserve, Lot 427 On Deposited Plan 202731, Oldbury. The revegetation offset is condition 9 of permit CPS 10545/2 to facilitate the rehabilitation of 0.57 hectares of native vegetation. The offset aims to provide:

- 0.57 ha of significant foraging habitat for forest red-tailed black cockatoos (*Calyptorhynchus banksii naso*),
- 0.56 ha of significant foraging habitat for Carnaby's cockatoo (*Zanda latirostris*),



- 0.56 ha of native vegetation that is broadly representative of the Beermullah Vegetation Complex,
- 0.28 hectares of significant foraging habitat for Baudin's cockatoo (*Zanda baudinii*), and
- 0.09 ha of native vegetation that is broadly representative of the *Corymbia calophylla* – *Xanthorrhoea preissii* woodlands and shrublands (*Corymbia* Woodlands) Threatened Ecological Community of the Swan Coastal Plain.

2. Request details

The necessary rehabilitation activities will take place in a 0.57 ha section of the Reserve, specifically within an area characterised by marri woodland (Figure 1). The marri woodland belongs to the vegetation complex SCP3b (*Corymbia calophylla* – *Eucalyptus marginata* woodlands) and belongs to a Threatened Ecological Community.

Figure 1 shows the 0.57 ha rehabilitation area that must be revegetated according to the details outlined in condition 9 of CPS 10545/2 (Table 1). These activities must be undertaken to achieve the Completion Criteria and monitoring requirements outlined in Table 2.

The Shire of Serpentine Jarrahdale's Marri Woodland Management Plan 2024, contains a reserve action plan for the management of Marri Woodland in the King Road Pony Club Reserve (Attachment 1). Relevant information from the Marri Woodland Management Plan has been incorporated into Table 1 to assist in implementing the revegetation components to meet both DWER's conditions and the Shire's management standards. Table 3 provides a proposed five year implementation and maintenance timeline for the required revegetation works.



Schedule 2

The boundary of the area designated as an offset site is shown in the map below (Figure 3).

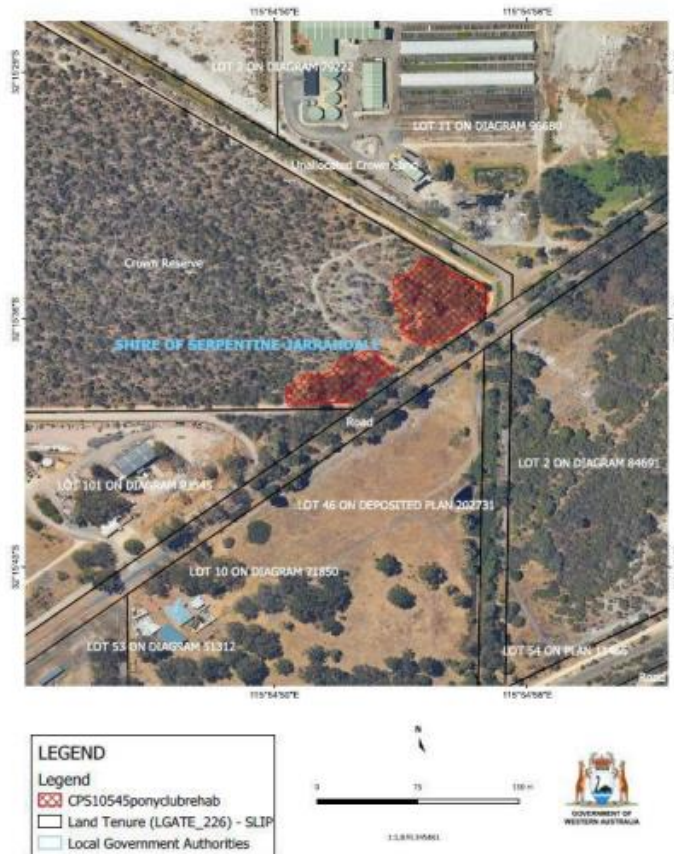


Figure 3: Offset area required to be rehabilitated and placed under a conservation covenant, in accordance with conditions 9 and 10 of this permit, respectively.

Figure 1. Offset revegetation area (Schedule 2, Figure 3 of CPS 10545/2).



Table 1. Revegetation activities to be undertaken at King Road Pony Club between 2026 and 2029.

COMPONENT	CONDITION DETAILS	Relevant Management Plan Action (Table 3, pg 171)	Marri Woodland Specific Guidance	Revegetation
Revegetation	Undertaken direct seeding and planting, using species and local provenance propagation material representative of the <i>Corymbia calophylla</i> woodlands TEC	<ul style="list-style-type: none">Action 29: Revegetate with local provenance seedlings as necessary and appropriate	<ul style="list-style-type: none">Refer to Appendix 1 of Marri Woodland Management Plan for target local native species listSeed collection program to occur in spring summer 25/26Target species density of 2 plants per square metre to commence in Winter 2026	
Dieback hygiene	Implement appropriate hygiene protocols prior to entering and leaving the rehabilitation area	<ul style="list-style-type: none">Action 13: Establish dieback hygiene policies, including vehicle washdown points and foot baths for pedestrians with appropriate signage	<ul style="list-style-type: none">The rehabilitation area has been mapped as dieback infected.Ensure vehicles and footwear are appropriately cleaned prior to entering and exiting the rehabilitation area.	
Weed control	Undertake weed control of high priority environmental weeds activities bi-annually	<ul style="list-style-type: none">Action 16: Monitor weed diversity and distribution annually.Action 17: Establish and implement a weed control	<ul style="list-style-type: none">Refer to Appendix 1 for detailed list of weeds present in King Road Pony Club Reserve.	



		program that utilises best practice methods.	<ul style="list-style-type: none"> Target priority weeds include <i>Ehrharta calycina</i>, <i>Eragrostis curvula</i>, <i>Gladiolus caryophyllaceous</i>, <i>Solanum nigrum</i>, <i>Sonchus oleraceus</i> and <i>Zantedeschia aethiopica</i>.
Quadrat monitoring & reporting	<p>Establish four 10 x 10 m quadrat monitoring sites and monitor annually for three years post planting.</p> <p>Annual reports to the Shire outlining the details of rehabilitation activities undertaken as part of this request.</p>	<ul style="list-style-type: none"> Action 31: Update actions according to best practice management and monitoring outcomes 	<ul style="list-style-type: none"> Provide annual report to staff to enable monitoring results to inform ongoing review of Management Plan
Ongoing maintenance	Ongoing weed control, infill planting and boundary fence repairs for three years post planting		

Table 2. Completion criteria for the rehabilitation area.

ASPECT	COMPLETION CRITERIA	MONITORING
Survival rate to be achieved	The rehabilitation site must ensure a survival rate of at least 70 per cent of the seedlings initially planted.	The species in the rehabilitation area, will be counted annually by an environmental specialist in spring for a minimum of three years after the last year plants were established.
Vegetation Structure	Vegetation in the rehabilitation area must include native vegetation that is broadly representative of the <i>Corymbia calophylla</i> woodlands TEC, by establishing understorey and mid-storey species and providing conditions suitable for expanding remnant understory species across the site	The structure is to be assessed annually by an environmental specialist in spring for a minimum of three years after the last year plants were established.
Black cockatoo	Vegetation in the rehabilitation site must contain native foraging species for black cockatoo species.	Assessed annually by an environmental specialist in spring for a minimum of three years after the last year plants were established.
Percentage of weeds present	Weed coverage within the rehabilitation site to have no more than 15 per cent weed coverage. No Weeds of National Significance (WoNS) within the rehabilitation site.	Monitor the rehabilitation site for weeds by quadrates annually in spring for a minimum of three years after the last year plants were established.
Patch size of bare ground	The rehabilitation area has no more than 5 per cent of bare ground.	The patch size of bare ground is to be assessed annually by an environmental specialist in spring for a minimum of three years after the last year plants were established.
Declared weeds	No Declared Weeds under the Biosecurity and Agricultural Management Act 2007 present	Monitor the rehabilitation site for Declared weeds by quadrates biannually in autumn and spring for a minimum of three years after the last year plants were established.



Boundary Fence	Gates and boundary fence of rehabilitation area must be in good condition with no clear damage that will enable access by the general public, kangaroos or livestock.	Annually until completion criteria has been met.
----------------	---	--



3. Proposed Timeframe

2025													
Component	Jan	Feb	Mar	Apr	May	Jun	Jul	Aug	Sep	Oct	Nov	Dec	
Revegetation (seed collection, plant propagation, tubestock order)													
Dieback hygiene													
Weed control													
2026													
Component	Jan	Feb	Mar	Apr	May	Jun	Jul	Aug	Sep	Oct	Nov	Dec	
Revegetation													
Dieback hygiene													
Weed control													
Quadrat monitoring & reporting													
2027													
Component	Jan	Feb	Mar	Apr	May	Jun	Jul	Aug	Sep	Oct	Nov	Dec	
Revegetation													
Dieback hygiene													
Weed control													
Quadrat monitoring & reporting													



2028 & 2029												
Component	Jan	Feb	Mar	Apr	May	Jun	Jul	Aug	Sep	Oct	Nov	Dec
Dieback hygiene												
Weed control												
Quadrat monitoring & reporting												
Ongoing maintenance eg fence repair, infill planting												

4. Pricing Schedule

Table 4 below presents a pricing table template for completion by a supplier submitting a quotation. Works awarded to the successful contractor can only commence on issue of a Purchase Order. A purchase order will be issued on a financial year basis.

Table 4. Pricing schedule template for completion – King Road Pony Club Reserve

Component	Quantity	Cost ex GST
2025		
Revegetation - summer seed collection	1 program	
Ongoing dieback hygiene	1	
Weed control (winter, spring)	2 events	
Fencing repair	500m	
2026		
Revegetation - propagation & tubestock supply	11,400	
Revegetation - planting	11,400	
Ongoing dieback hygiene	1	
Weed control (winter, spring)	2 events	
Quadrat monitoring	4 quadrats	
Reporting	1 report	
2027		
Revegetation (infill)	3000	
Ongoing dieback hygiene	1	
Weed control (winter, spring)	2 events	
Quadrat monitoring	4 quadrats	
Reporting	1 report	
2028 & 2029		
Ongoing dieback hygiene	1	
Weed control (winter, spring)	2 events	
Quadrat monitoring	4 quadrats	
Reporting	1 report	
Ongoing maintenance eg fence repair, infill planting	1	
TOTAL		