

CPS 10568/1 - Map

116°13'48"E

116°14'24"E

116°15'0"E

33°19'48"S

33°20'24"S

33°21'0"S

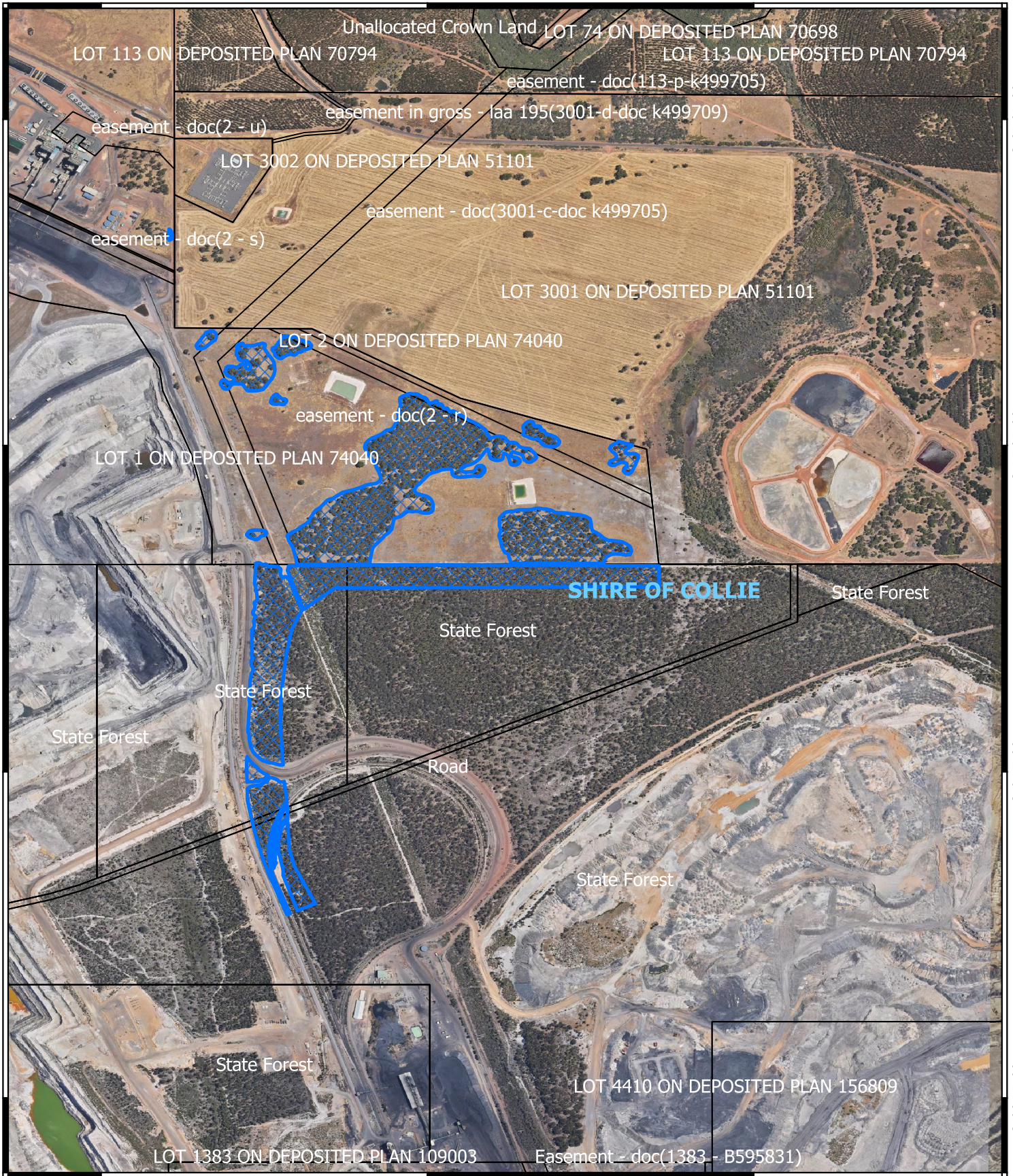
33°21'36"S

33°19'48"S

33°20'24"S

33°21'0"S

33°21'36"S






116°13'48"E

116°14'24"E

116°15'0"E

Legend

-  CPS areas applied to clear
-  Land Tenure
-  Local Government Authorities



0 300 600 m



1:11,000

Projection: GDA2020



GOVERNMENT OF
WESTERN AUSTRALIA