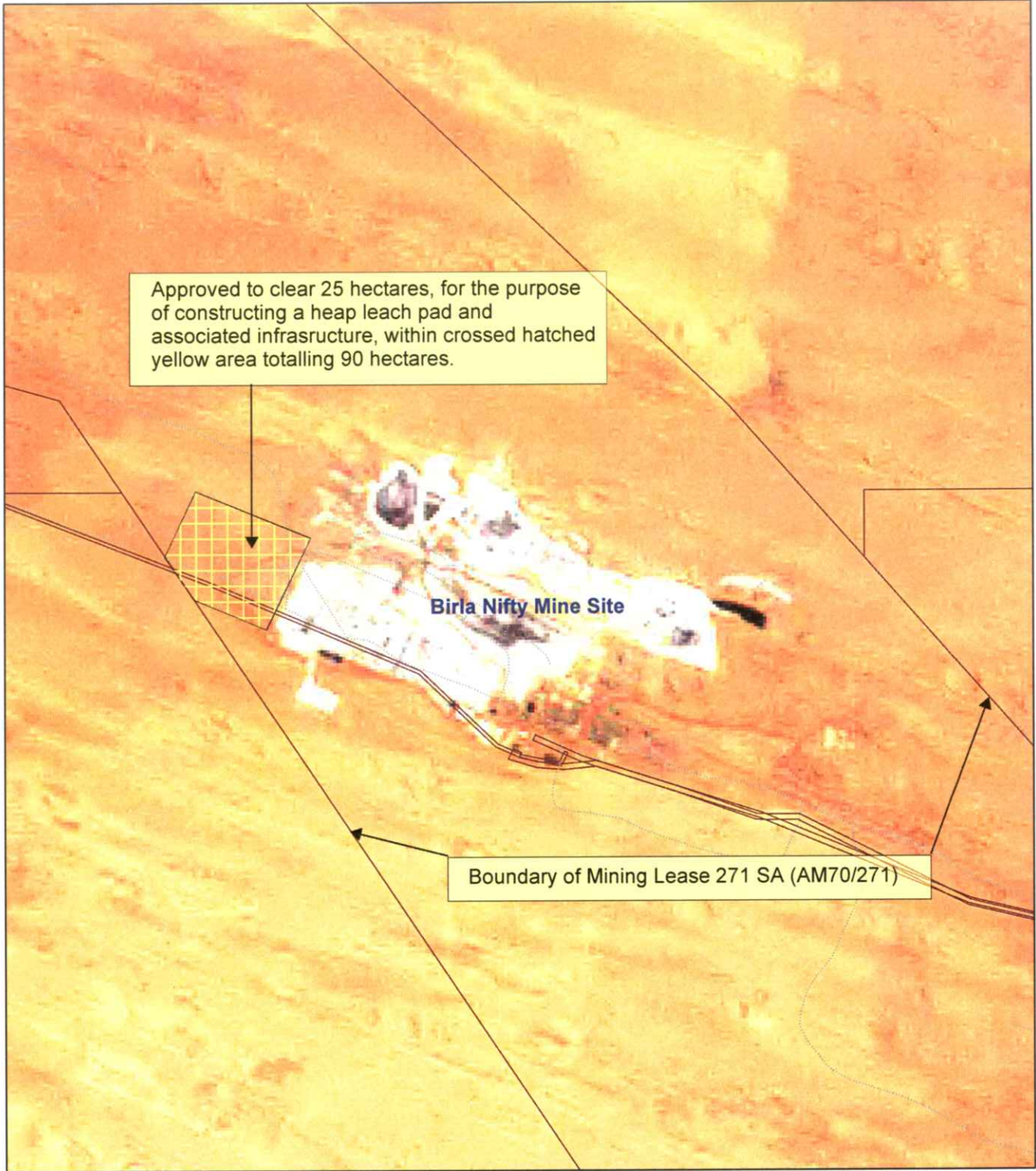


# PLAN 1059/1

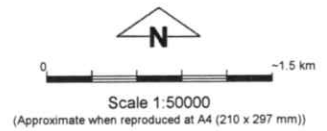


## LEGEND

- |  |   |  |
|--|---|--|
| <ul style="list-style-type: none"> <li> Mining Tenements - DOIR</li> <li> Cadastre - DLI 1/12/05</li> <li> Road Centrelines - DLI 1/5/04</li> <li> Freeway</li> <li> Highway (cont)</li> </ul> | <ul style="list-style-type: none"> <li> Local Rd - Other</li> <li> Local Rd - Sealed</li> <li> Main Road</li> <li> No classification</li> <li> Track</li> </ul> | <p><b>Western Australia ETM</b><br/>25m 543 - AGO 04</p> |
|--|---|--|

### Clearing Instruments

- Areas Applied to Clear
- Areas Subject to Conditions
- Areas Approved to Clear



Geocentric Datum Australia 1994

*Note: the data in this map have not been projected. This may result in geometric distortion or measurement inaccuracies.*

Date 25.5.06

Kim Anderson

Officer with delegated authority under Section 20 of the Environmental Protection Act 1986

Information derived from this map should be confirmed with the data custodian acknowledged by the agency acronym in the legend.

