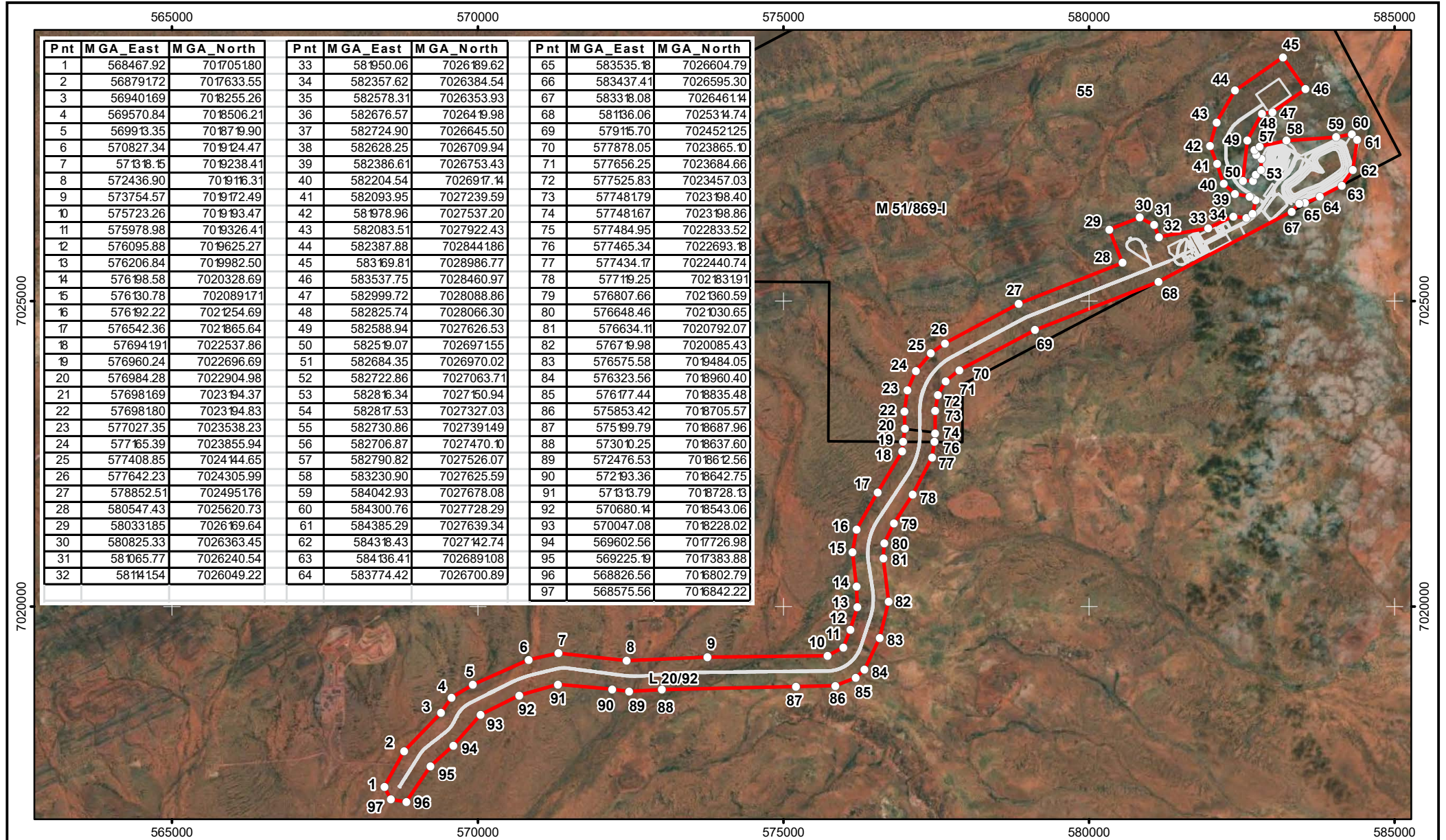


Source:



Pnt	MGA_East	MGA_North	Pnt	MGA_East	MGA_North	Pnt	MGA_East	MGA_North
1	568467.92	701705.180	33	581950.06	7026189.62	65	583535.18	7026604.79
2	568791.72	7017633.55	34	582357.62	7026384.54	66	583437.41	7026595.30
3	569401.69	7018255.26	35	582578.31	7026353.93	67	583318.08	7026461.14
4	569570.84	7018506.21	36	582676.57	7026419.98	68	581136.06	7025314.74
5	569913.35	7018719.90	37	582724.90	7026645.50	69	579115.70	7024521.25
6	570827.34	7019124.47	38	582628.25	7026709.94	70	577878.05	7023865.10
7	571318.15	7019238.41	39	582386.61	7026753.43	71	577656.25	7023684.66
8	572436.90	7019116.31	40	582204.54	7026917.14	72	577525.83	7023457.03
9	573754.57	7019172.49	41	582093.95	7027239.59	73	577481.79	7023198.40
10	575723.26	7019193.47	42	581978.96	7027537.20	74	577481.67	7023198.86
11	575978.98	7019326.41	43	582083.51	7027922.43	75	577484.95	7022833.52
12	576095.88	7019625.27	44	582387.88	7028441.86	76	577465.34	7022693.18
13	576206.84	7019982.50	45	583169.81	7028986.77	77	577434.17	7022440.74
14	576198.58	7020328.69	46	583537.75	7028460.97	78	577119.25	7021831.91
15	576130.78	7020891.71	47	582999.72	7028088.86	79	576807.66	7021360.59
16	576192.22	7021254.69	48	582825.74	7028066.30	80	576648.46	7021030.65
17	576542.36	7021865.64	49	582588.94	7027626.53	81	576634.11	7020792.07
18	576941.91	7022537.86	50	582519.07	7026971.55	82	576719.98	7020085.43
19	576960.24	7022696.69	51	582684.35	7026970.02	83	576575.58	7019484.05
20	576984.28	7022904.98	52	582722.86	7027063.71	84	576323.56	7018960.40
21	576981.69	7023194.37	53	582816.34	7027150.94	85	576177.44	7018835.48
22	576981.80	7023194.83	54	582817.53	7027327.03	86	575853.42	7018705.57
23	577027.35	7023538.23	55	582730.86	7027391.49	87	575199.79	7018687.96
24	577165.39	7023855.94	56	582706.87	7027470.10	88	573010.25	7018637.60
25	577408.85	7024144.65	57	582790.82	7027526.07	89	572476.53	7018612.56
26	577642.23	7024305.99	58	583230.90	7027625.59	90	572193.36	7018642.75
27	578852.51	7024951.76	59	584042.93	7027678.08	91	571313.79	7018728.13
28	580547.43	7025620.73	60	584300.76	7027728.29	92	570680.14	7018543.06
29	580331.85	7026169.64	61	584385.29	7027639.34	93	570047.08	7018228.02
30	580825.33	7026363.45	62	584318.43	7027142.74	94	569602.56	7017726.98
31	581065.77	7026240.54	63	584136.41	7026891.08	95	569225.19	7017383.88
32	581141.54	7026049.22	64	583774.42	7026700.89	96	568826.56	7016802.79
						97	568575.56	7016842.22

Notes
Development Envelope area 1297 ha

- Legend
- W11 Proposed Infrastructure
 - Tenements 06/04/2024
 - Proposed Development Envelope



0 2,000m
Scale: 1:85,000
MGA94 (Zone 50)
Author: G. Seat, J. Shepherdson
Date: May 2024 Rev: B A4

FENIX Fenix Beebyn Pty Ltd.
Lv 33, 1 Spring St Perth, WA 6000
Head Office: + 61 (0)8 9226 2011
<https://fenixresources.com.au>
CAD Ref: a3028_Env_07_12_01
Drawn: CAD Resources
www.cadresources.com.au ~ Tel: (08) 9246 3242

Beebyn-W11 Iron Ore Deposit Development Envelope