

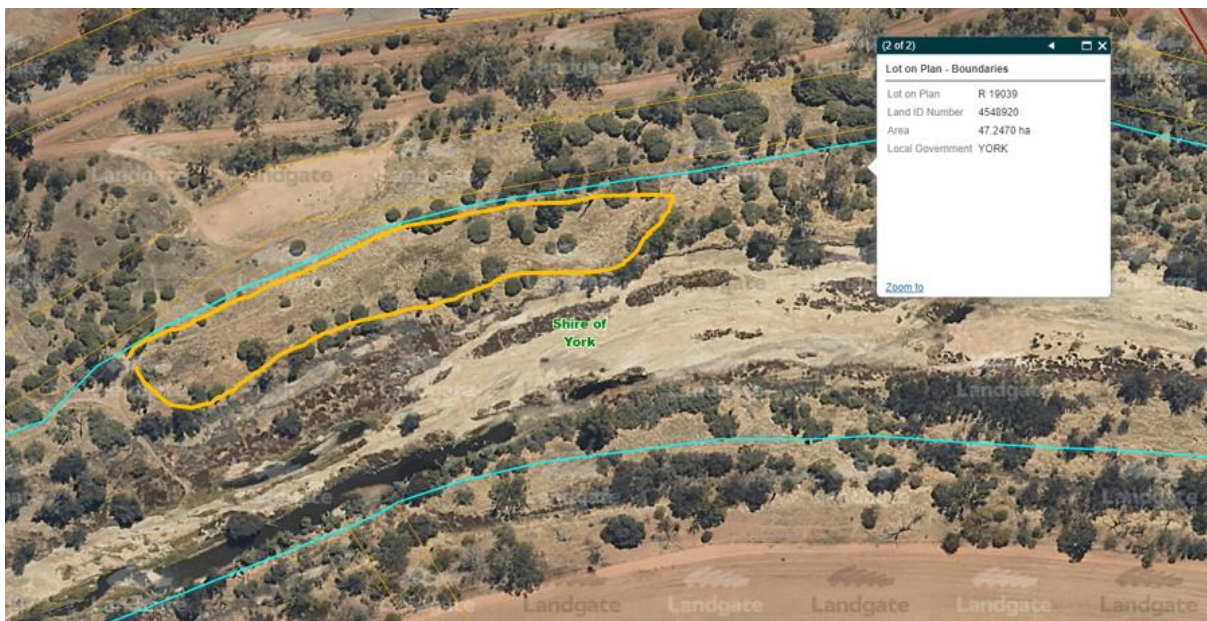
Revegetation Plan

Introduction

The WA Wheatbelt region has faced significant environmental changes due to agricultural activities, leading to soil degradation and loss of native vegetation.

This project aims to establish offset plantings in response to Clearing Application CPS 10641.1.

This revegetation plan aims to restore ecological balance, enhance biodiversity, and improve soil health on the site delineated below. The following plan outlines the steps required to achieve successful revegetation.



Crown Reserve R 19039, York Western Australia

Background

The Avon River Reserve is approximately 7km long and runs on either side of the Avon River, which flows through the centre of the York Township. A section of this River Reserve, designated under Crown Reserve R 19039, has been identified as a proposed site for revegetation to offset the clearing of York Gum saplings from a property in York. The revegetation area along the river is characterised York Gum-Flooded Gum woodland, with brown loamy earth, grey non-cracking clay and brown deep sand. The revegetation activity in this area will focus on a composition of species from the York Gum over Scrub and Herbs Sub-community Profile.

Site Preparation

Site preparation is critical for the success of the revegetation project. The process involves:

- Removing existing weeds and debris to minimize competition for resources.
- Physical ripping of the site to alleviate soil compaction and allow for water infiltration
- Implementing soil erosion control measures to protect the site from wind and water erosion.
- Protect the area from grazing livestock, if required.

Weed Control

Effective weed control is vital for the success of the revegetation effort. The following methods will be implemented:

- Pre-planting herbicide application to reduce the weed seed bank in the soil.
- Regular weeding around the seedlings to minimize competition for water and nutrients.
- Continued spot spraying of herbicides as necessary to control persistent weed species.

Species List and Composition

The species composition of York Gum over shrub and Herbs Sub-Community profile will be used for this revegetation activity. Recommended species include:

- *Eucalyptus loxophleba* (York Gum)
- *Eucalyptus rudis* (Flooded Gum)
- *Hakea preissii* (Needle Tree)
- *Acacia acuminata* (Jam)

Seedlings will be sourced from a Wheatbelt based nursery and will be hardened off before planting. Tube stock will be planted at a density of 1200/ ha.

All seedlings will be obtained from Dieback free sources.

Planting Methodology

The following planting methodology has been selected to ensure the survival and growth of the native species.

The planting guide includes:

- Planting during the optimal season, typically June to July, to take advantage of the natural rainfall and for maximising soil moisture.
- Using appropriate planting tools such as Potta Pukkis.
- Ensuring seedlings are planted at the correct depth, with the root collar level with the soil surface.
- Based on an assumption of 80% survival, additional revegetation will be planted to allow for losses.

Follow Up and Monitoring Survival

Ongoing monitoring and follow-up actions are necessary to ensure the long-term success of the revegetation project. Steps include:

- Conducting regular site visits to assess plant growth, health, and survival rates.
- Implementing supplementary watering during dry periods to support young plants in the first 12 months.
- Maintaining records of planting dates, species used, and survival rates to inform future revegetation efforts.

Conclusion

The Shire of York will implement best practice revegetation techniques, based on Wheatbelt practices to maximise survival rates, reflect local ecological communities and increase native vegetation extent in the Shire.

Appendix A, Site Locations

Revegetation Location, Crown Reserve R 19039 York



Appendix B – Plant Species List Resources

Wheatbelt Natural Resource Management. (n.d.). Sub-community profile: York Gum over Scrub and Herbs. <https://www.wheatbeltnrm.org.au/sites/default/files/projects/files/What%20Woodland%20is%20that%20-%20York%20Gum%20over%20Scrub%20and%20Herbs.pdf>

Department of Environment and Conservation. (2011, April 15). Plants Used by Carnaby's Black Cockatoo. *List prepared by Christine Groom.*