



Permit Type- Area permit.

Company- Manjimup Kiwi Pty Ltd

ACN- 666 202 099

Land- Lot 101 & Lot 102

Area to clear Total- 4.45 ha

Local Government- Shire of Manjimup

Supporting letter for vegetation clearance on the 101 Mersea Road and 26547 South Western Highway farms.

The land is in the intensive land use zone.

- Two recent six months Record of certificate of title
- ESRI Shapefiles
- Photos of the vegetation areas
- Marked photos of the areas
- Letter of ownership of land
- Cockatoo boxes



Total = 4.45ha  
3.45 ha on Mersea  
1 ha on Wilgarrup

Image 1- Mersea zone office = 1.85 ha to clear.

High traffic area



The image above shows the area we would like to clear to build 90x15x6 shed. This is the entrances onto the farm, parking, office and staff area is used in this part of the farm. It's a high traffic area. By clearing the trees, this will help Bio Security, bush fires. This part will be used for large trucks and visits in a control area of the farm.

The shed will have a loop around driveway, which means the larger trucks will not need to enter the orchard, which will allow us to protect the soil, flora and fauna and bio security. Which will reduce impact to the land, with less traffic means less compacting soil.

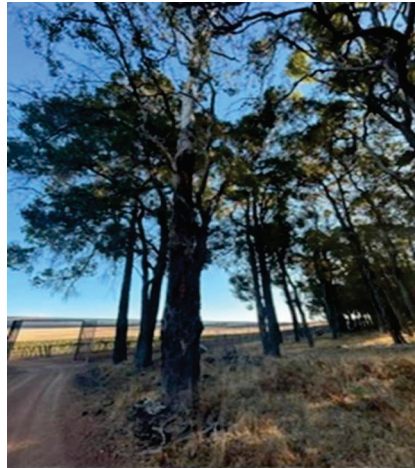
Damage to the land from soil compacting

- Distorted crop root systems, disease
- Crop logging uneven plant growth and uneven ripening of crop.
- Water ponding
- Increased soil cloudiness
- Disease from transit
- Fires



Please see photos of the trees in the zone needed to clear for the shed.

The trees are Marri trees in this zone, with dieback and trees with diseases.



Male Bock, North end 15m width.

Area to clear is 0.85Ha.



Male Block, South end 15m width

Area to be clear is 0.75Ha



This is planted with kiwifruit under netting, to control fires and damage, we are needing to clear 15m from the netting posts. Please see images below, Though all trees will not be removed in this area, we are unlikely to know until the clearance start of what trees will need to go and what can stay.

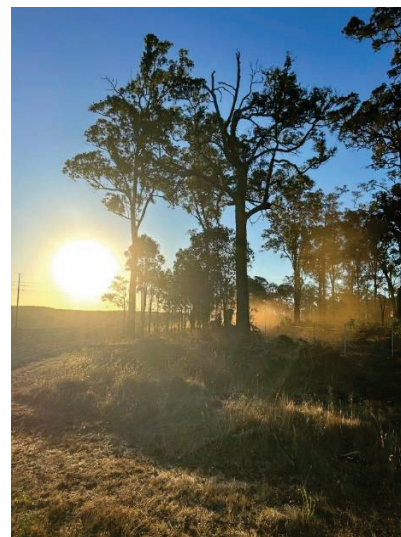




## Wilgarrup -1 ha

The image below shows the area we would like to clear to further develop the land for kiwifruit, planting will take place soon and netting and fire control is the main reason to remove the trees.

In the photos below of the trees in the area from the fence line to the driveway will need to be cleared.







The total area to be cleared will be Total of 4.45ha

3.45 ha on Mersea lot 101

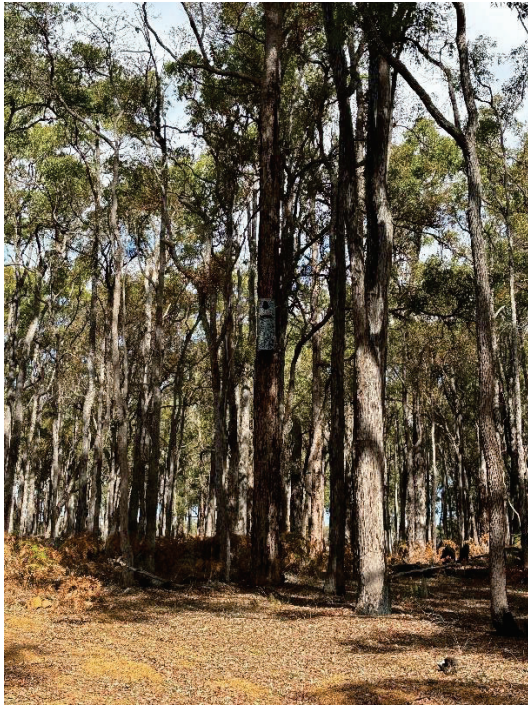
1 ha on Wilgarrup lot 102



Manjimup Kiwi are passion about the environment and protect it. We have set aside land for planted natives. Please see image below of the area for native planting. A total of 7 ha, with all natives and flowering flora.



The orchards have three artificial hollows for the black cockatoos though they have no signs of being used, we will contain monitoring them with the guides from species and communities at DBCA. The boxes are in a non-traffic area with cameras.



The trees after clearance will be milled, sold, mulch and the rest made into compost to help the soil replenish. The microbes from the compost will help retain water. Tree mulching can prevent evaporative from the soil by up 70%. We are passionate about making the farm as sustainable as possible, with hire of Environment research coordinator, Environment specialist in soils and compost.