

CPS 10665/1 - Map

116°1'4"E

116°1'6"E

116°1'8"E

32°2'43"S

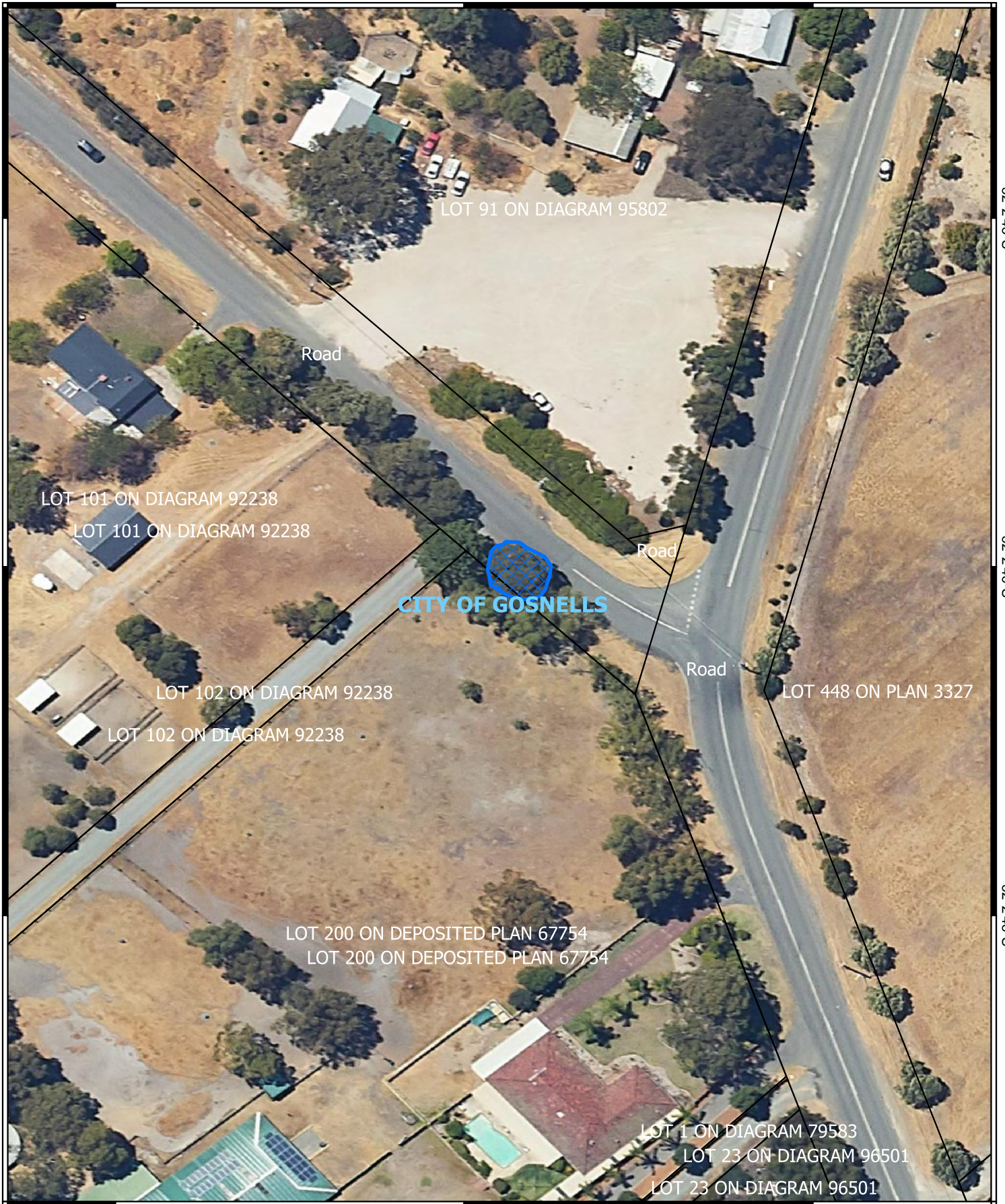
32°2'43"S

32°2'46"S

32°2'46"S

32°2'48"S

32°2'48"S




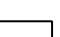


116°1'4"E

116°1'6"E

116°1'8"E

Legend

-  CPS areas applied to clear
-  Local Government Authorities
-  Roads
-  Land Tenure

N



1:625

Projection: GDA2020



GOVERNMENT OF
WESTERN AUSTRALIA