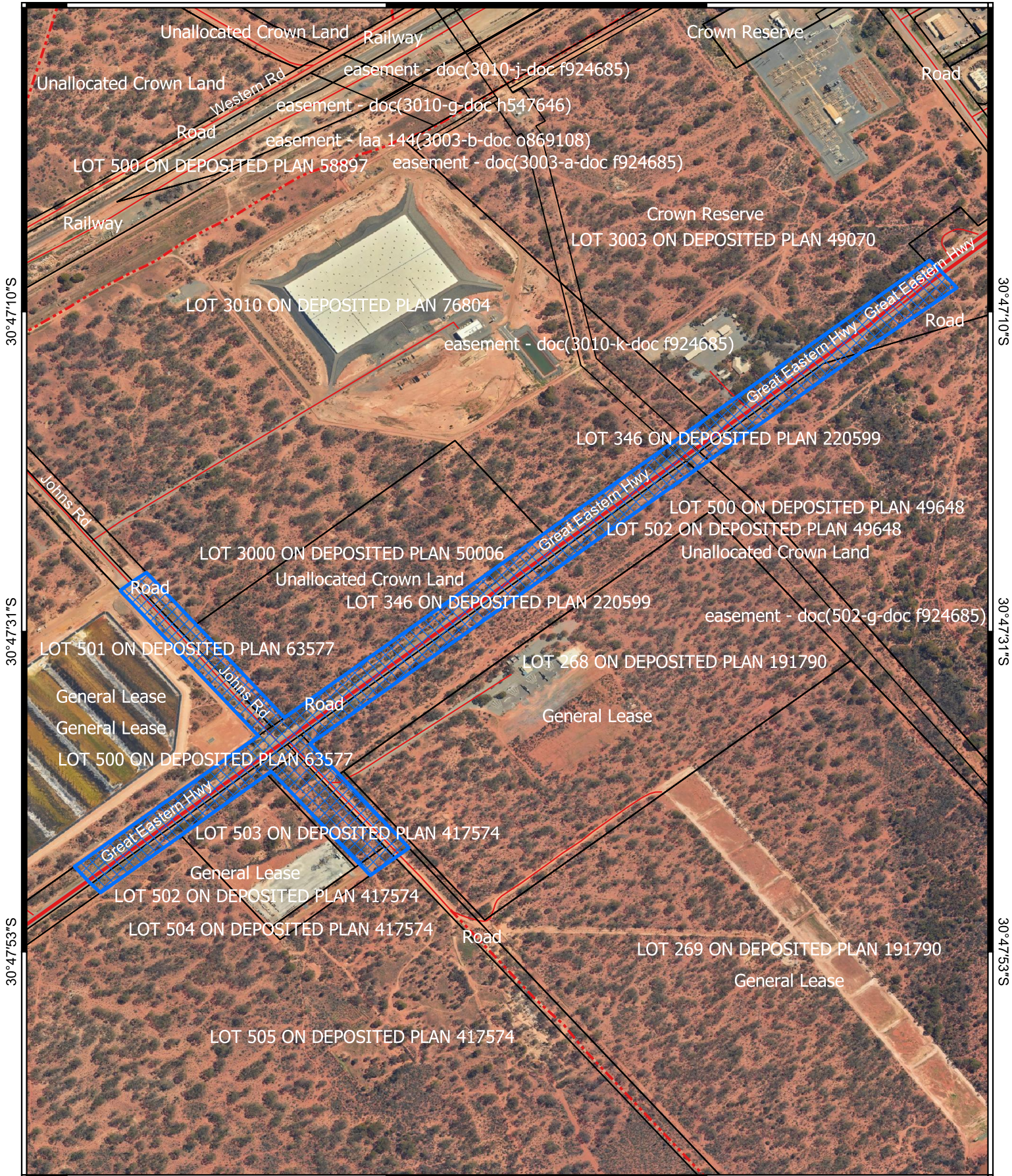


CPS 10675/1 - Map

121°24'36"E

121°24'58"E

121°25'19"E



30°47'10"S

30°47'31"S

30°47'53"S

30°47'10"S

30°47'31"S




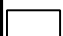
30°47'53"S

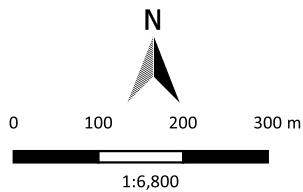
121°24'36"E

121°24'58"E

121°25'19"E

Legend

-  CPS areas applied to clear
-  Local Government Authorities
-  Roads
-  Land Tenure



Projection: GDA2020



GOVERNMENT OF
WESTERN AUSTRALIA