

CPS 10678/1 - Map A

118°30'0"E

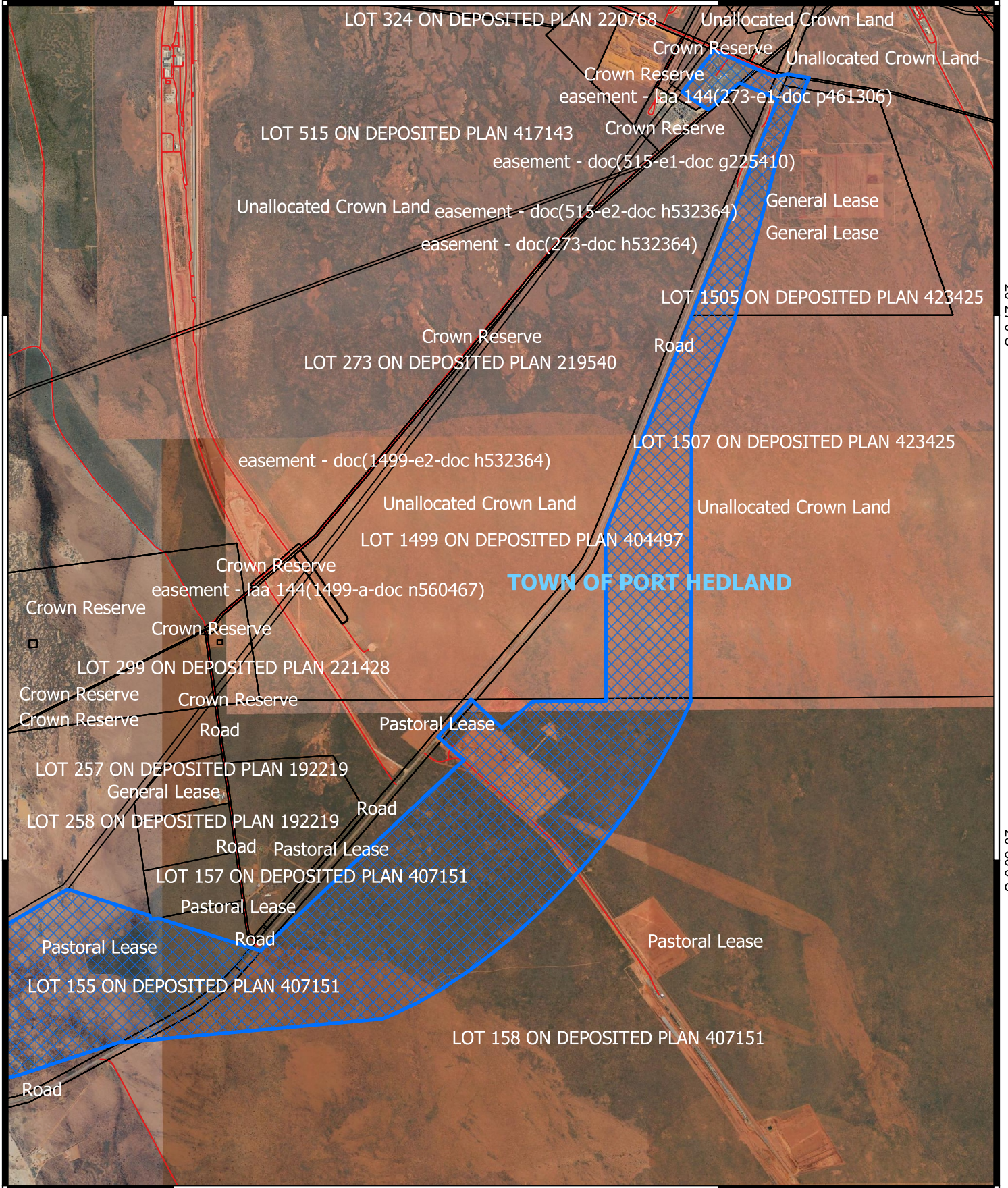
118°33'0"E

20°27'0"S

20°27'0"S

20°30'0"S


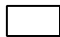

20°30'0"S



118°30'0"E

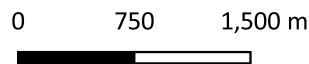
118°33'0"E

Legend

-  CPS areas applied to clear
-  Land Tenure (LGATE_226) - SLIP
-  Local Government Authorities

Roads

-  Minor



Projection: GDA 2020

1:40,000



**GOVERNMENT OF
WESTERN AUSTRALIA**