

CPS 10678/1 - Map C

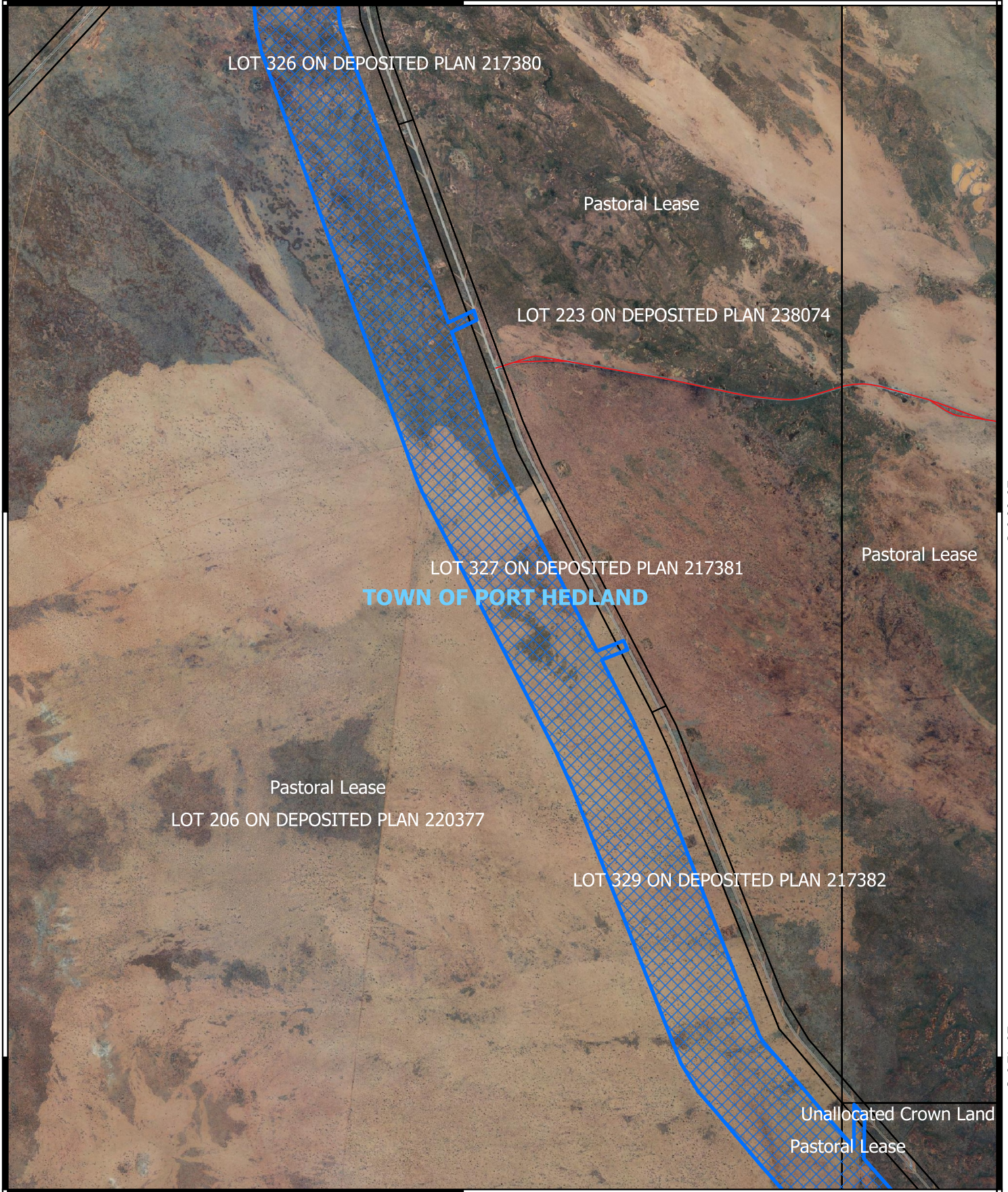
118°27'0"E

20°39'0"S

20°39'0"S


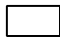

20°42'0"S

20°42'0"S



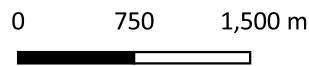
118°27'0"E

Legend

-  CPS areas applied to clear
-  Land Tenure (LGATE_226) - SLIP
-  Local Government Authorities

Roads

-  Minor



Projection: GDA 2020

1:40,000



GOVERNMENT OF
WESTERN AUSTRALIA