

CPS 10681/1 - Map C

117°53'27.600"E

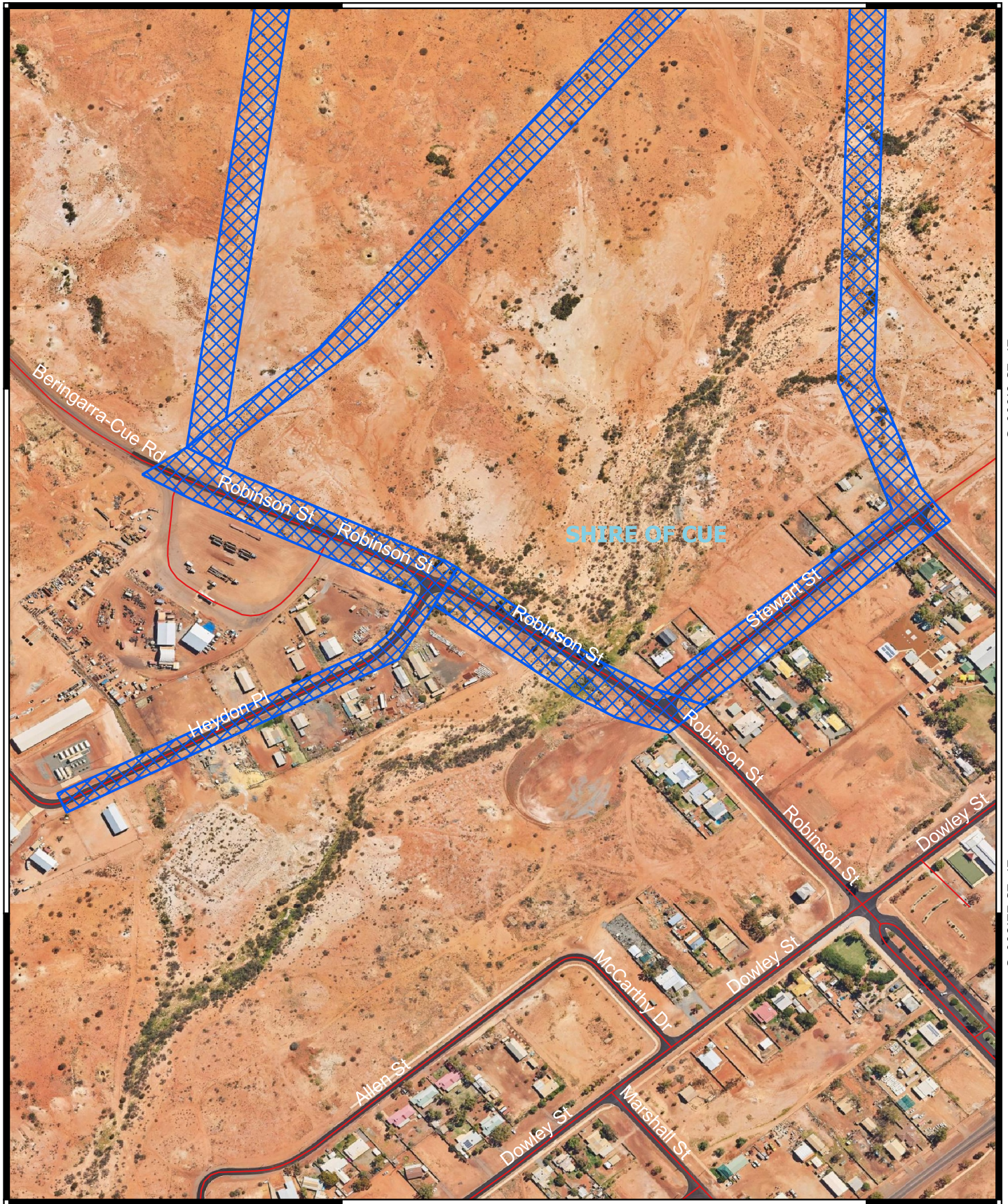
117°53'43.800"E

27°25'6.600"S

27°25'6.600"S

27°25'22.800"S



27°25'22.800"S





117°53'27.600"E

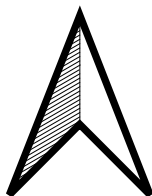
117°53'43.800"E

Legend

-  CPS areas applied to clear
-  Local Government Authorities

Roads

-  Main
-  Minor



0 75 150 m



Projection GDA 2020

1:3,500



GOVERNMENT OF
WESTERN AUSTRALIA